

# Double Pitch Sprockets Asian Standard Series

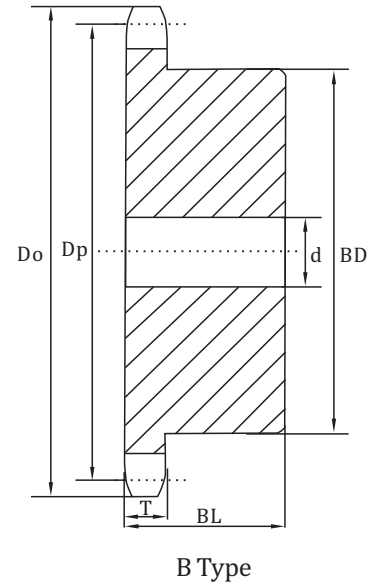
# NK 2040SB NK2050SB NK2060SB

## NK 2040SB

SPROCKETS mm  
Tooth width (T) 7.2

CHAIN mm  
Pitch (P) 25.4  
Internal width 7.95  
Roller  $\Phi$ (Dr) 7.95

Type	Teeth	Do	Dp	Bore d			BD	BL	Wt kg	Material
				Stock	Min	Max				
NK 2040SB	6 1/2									C45 Solid Hardened Teeth
	7 1/2									
	8 1/2									
	9 1/2									
	10 1/2									
	11 1/2									
	12 1/2									



Type	Teeth	Do	Dp	Bore d			BD	BL	Wt kg	Material
				Stock	Min	Max				
NK 2050SB	6 1/2	74	68.32	14	16	25	44	25	0.38	C45 Solid Hardened Teeth
	7 1/2	84	78.06	14	16	32	54	25	0.55	
	8 1/2	94	87.89	14	16	45	65	25	0.76	
	9 1/2	105	97.78	14	16	48	73	28	1.06	
	10 1/2	115	107.72	14	16	48	73	28	1.16	
	11 1/2	125	117.68	16	18	48	73	28	1.27	
	12 1/2	135	127.67	16	18	48	73	28	1.40	

## NK 2050SB

SPROCKETS mm  
Tooth width (T) 8.7

CHAIN mm  
Pitch (P) 31.75  
Internal width 9.53  
Roller  $\Phi$ (Dr) 10.16

Type	Teeth	Do	Dp	Bore d			BD	BL	Wt kg	Material
				Stock	Min	Max				
NK 2060SB	6 1/2	88	81.98	14	16	32	53	32	0.73	C45 Solid Hardened Teeth
	7 1/2	101	93.67	16	18	45	66	32	1.05	
	8 1/2	113	105.47	16	18	48	73	32	1.33	
	9 1/2	126	117.34	16	18	55	83	40	2.03	
	10 1/2	138	129.26	16	18	55	83	40	2.23	
	11 1/2	150	141.22	16	18	55	80	45	2.56	
	12 1/2	162	153.20	16	18	55	80	45	2.81	

## NK 2060SB

SPROCKETS mm  
Tooth width (T) 11.7

CHAIN mm  
Pitch (P) 38.10  
Internal width 12.70  
Roller  $\Phi$ (Dr) 11.91

# Double Pitch Sprockets Asian Standard Series

**NK 2080SB**  
**NK2100SB**

## NK 2080SB

SPROCKETS mm  
Tooth width (T) 14.6

CHAIN mm  
Pitch (P) 50.80  
Internal width 15.88  
Roller  $\Phi$  (Dr) 15.88

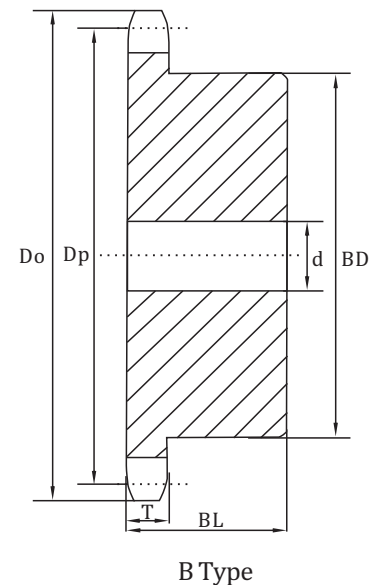
Type	Teeth	Do	Dp	Bore d			BD	BL	Wt kg	Material
				Stock	Min	Max				
NK 2080SB	6 1/2	118	109.31	16	18	46	70	40	1.62	C45 Solid Hardened Teeth
	7 1/2	135	124.90	20	22	60	88	40	2.34	
	8 1/2	151	140.63	20	22	63	93	40	2.48	
	9 1/2	167	156.45	20	22	63	93	40	3.24	
	10 1/2	184	172.35	20	22	63	93	40	3.68	A3 Weld
	11 1/2	200	188.29	26	28	75	107	45	4.88	
	12 1/2	216	204.27	26	28	75	107	45	5.43	

## NK 2100SB

SPROCKETS mm  
Tooth width (T) 17.6

CHAIN mm  
Pitch (P) 63.50  
Internal width 19.05  
Roller  $\Phi$  (Dr) 19.05

Type	Teeth	Do	Dp	Bore d			BD	BL	Wt kg	Material
				Stock	Min	Max				
NK2100SB	6 1/2	148	136.64	20	22	60	88	50	3.38	C45 Solid Hardened Teeth
	7 1/2	168	156.12	20	22	66	98	50	4.12	
	8 1/2	189	175.78	20	22	75	107	50	5.15	
	9 1/2	209	195.57	20	22	75	107	50	5.91	
	10 1/2	230	215.43	20	22	75	107	50	6.76	A3 Weld
	11 1/2	250	235.36	20	22	80	117	56	8.63	
	12 1/2	270	255.34	20	22	80	117	56	9.65	



# Double Pitch Sprockets Asian Standard Series

## NK 2040RB NK2050RB

Type	Teeth	Do	Dp	Bore d			BD	BL	Wt kg	Material	
				Stock	Min	Max					
NK 2040RB	7	68	58.54	16	18	22	★40	25	0.26	C45 Solid	
	8	77	66.37	16	18	28	★48	25	0.37		
	9	85	74.26	16	18	32	52	25	0.47		
	10	93	82.20	16	18	42	63	25	0.70		
	11	102	90.16	16	18	42	63	25	0.77		
	12	108	98.14	16	18	42	63	25	0.84		
	13	118	106.14	16	18	42	63	25	0.97		
	14	127	114.15	16	18	42	63	25	1.07		
	15	135	122.17	16	18	45	68	28	1.26		
	16	143	130.20	20	22	45	68	28	1.30		
	17	151	138.23	20	22	45	68	28	1.35		
	18	159	146.27	20	22	45	68	28	1.45		
	19	167	154.32	20	22	45	68	28	1.60		
	20	176	162.37	20	22	45	68	28	1.80		
	21	183	170.42	20	22	48	73	32	1.91		
	22	192	178.48	20	22	48	73	32	2.03		
	23	200	186.54	20	22	48	73	32	2.15		
	24	208	194.60	20	22	48	73	32	2.28		
	25	216	202.66	20	22	48	73	32	2.42		
	26	224	210.72	20	22	48	73	32	2.56		
	28	241	226.86	20	22	48	73	32	2.87		
	30	257	243.00	20	22	48	73	32	3.19		
	32	273	259.14	20	22	55	83	32	4.04		
											Fe360 Welding

★ Has recessed groove in hub for chain clearance

Type	Teeth	Do	Dp	Bore d			BD	BL	Wt kg	Material	
				Stock	Min	Max					
NK 2050RB	7	85	73.18	20	22	30	★50	28	0.46	C45 Solid	
	8	96	82.97	20	22	40	★60	28	0.67		
	9	106	92.83	20	22	42	66	28	0.86		
	10	116	102.75	20	22	48	73	28	1.10		
	11	127	112.70	20	22	48	73	28	1.20		
	12	138	122.67	20	22	48	73	28	1.30		
	13	148	132.67	20	22	48	73	28	1.50		
	14	158	142.68	20	22	48	73	28	1.90		
	15	168	152.71	20	22	48	73	28	2.00		
	16	179	162.74	20	22	48	73	28	2.30		
	17	189	172.79	20	22	55	83	35	2.45		
	18	199	182.84	20	22	55	83	35	2.75		
	19	209	192.90	20	22	55	83	35	2.95		
	20	220	202.96	20	22	55	83	35	3.15		
	21	229	213.03	20	22	55	83	35	3.25		
	22	240	223.10	20	22	55	83	35	3.48		
	23	250	233.17	20	22	55	83	35	3.71		
	24	260	243.25	20	22	55	83	35	3.96		
	25	270	253.32	20	22	55	83	35	4.22		
	26	281	263.41	20	22	55	83	35	4.49		
	28	301	283.57	20	22	55	83	35	5.06		
	30	321	303.75	20	22	55	83	35	5.68		
											Fe360 Welding

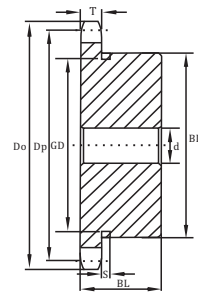
★ Has recessed groove in hub for chain clearance

### NK 2040RB

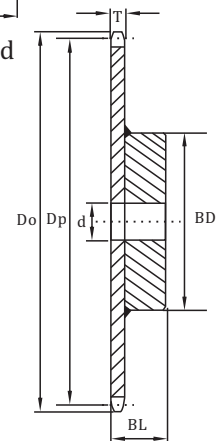
SPROCKETS mm  
Tooth width (T) 7.2

CHAIN mm  
Pitch (P) 25.4  
Internal width 7.95  
Roller Φ (Dr) 15.88

Teeth	S	GD
7	6	35
8		43



B Type Solid



B Type Weld

### NK 2050RB

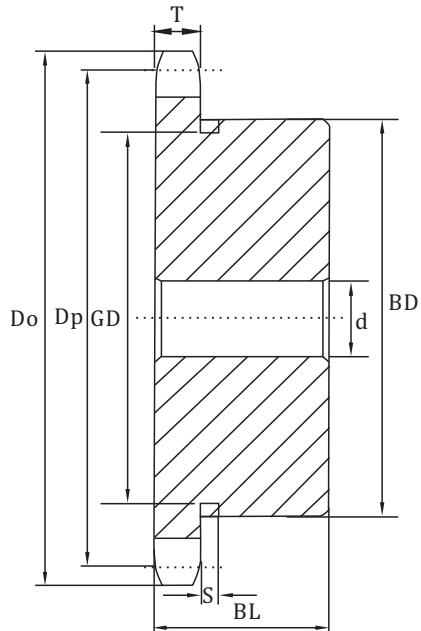
SPROCKETS mm  
Tooth width (T) 8.7

CHAIN mm  
Pitch (P) 31.75  
Internal width 9.53  
Roller Φ (Dr) 19.05

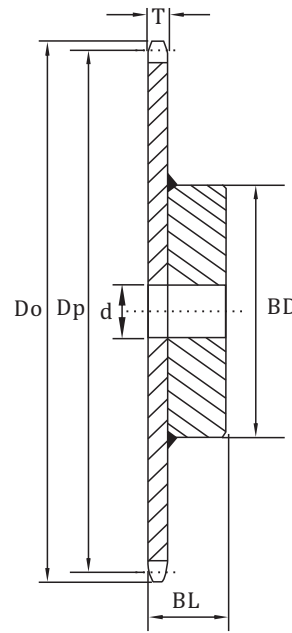
Teeth	S	GD
7	7	45
8		56

# Double Pitch Sprockets Asian Standard Series

## NK 2060RB



B Type Solid



B Type Weld

Type	Teeth	Do	Dp	Bore d			BD	BL	Wt kg	Material
				Stock	Min	Max				
NK 2060RB	7	102	87.81	20	22	40	★60	40	0.97	C45 Solid
	8	115	99.56	20	22	50	★75	40	1.44	
	9	128	111.40	20	22	50	80	40	1.80	
	10	140	123.29	20	22	55	80	45	2.50	
	11	153	135.23	20	22	55	80	45	2.60	
	12	165	147.21	20	22	55	80	45	2.80	
	13	177	159.20	20	22	55	83	45	3.10	
	14	190	171.22	20	22	55	83	45	3.60	
	15	202	183.25	20	22	55	83	45	3.90	
	16	214	195.29	20	22	55	83	45	4.20	
	17	227	207.35	26	28	63	93	45	4.60	Fe360 Welding
	18	239	219.41	26	28	63	93	45	5.00	
	19	251	231.48	26	28	63	93	45	5.50	
	20	263	243.55	26	28	63	93	45	6.00	
	21	276	255.63	26	28	63	93	45	5.89	
	22	288	267.72	26	28	63	93	45	6.34	
	24	312	291.90	26	28	63	93	45	7.28	
	25	324	303.99	26	28	63	93	45	7.77	
	26	337	316.09	26	28	63	93	45	8.77	
	28	361	340.29	26	28	63	93	45	9.90	
30	385	364.49	26	28	63	93	45	11.20		

★ Has recessed groove in hub for chain clearance

### NK 2060RB

SPROCKETS mm  
Tooth width (T) 11.7

CHAIN mm  
Pitch (P) 38.10  
Internal width 12.70  
Roller  $\Phi$ (Dr) 22.23

Teeth	S	GD
7	10	56
8		68

# Double Pitch Sprockets Asian Standard Series

## NK 2080RB NK2100RB

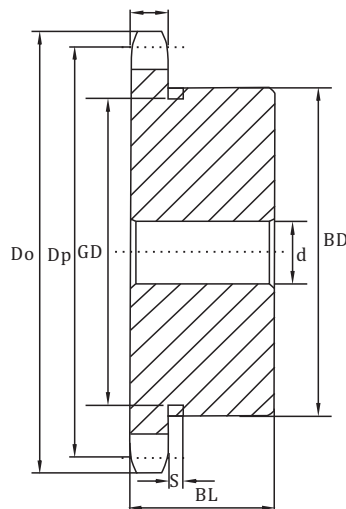
Type	Teeth	Do	Dp	Bore d			BD	BL	Wt kg	Material
				Stock	Min	Max				
NK 2080RB	7	136	117.08	20	22	50	76	40	1.85	C45 Solid
	8	153	132.75	20	22	60	93	40	2.64	
	9	170	148.53	20	22	65	110	40	3.56	
	10	187	164.39	20	22	63	93	40	3.29	
	11	204	180.31	26	28	75	107	45	4.42	
	12	220	196.28	26	28	75	107	45	4.94	
	13	237	212.27	26	28	75	107	45	5.46	
	14	253	228.29	26	28	75	107	45	6.09	
	15	269	244.33	26	28	75	107	45	6.70	
	16	286	260.39	26	28	75	107	45	7.42	
	17	302	276.46	26	28	75	107	45	8.12	
	18	319	292.55	26	28	80	117	50	9.76	
	19	335	308.64	26	28	80	117	50	10.56	
	20	351	324.74	26	28	80	117	50	11.46	
	24	416	389.19	26	28	80	117	50	16.30	
	25	433	405.32	26	28	80	117	50	17.50	
	26	449	421.45	26	28	80	117	50	18.70	
	28	481	453.72	26	28	80	117	50	21.20	
	30	514	485.99	26	28	80	117	50	24.00	

### NK 2080RB

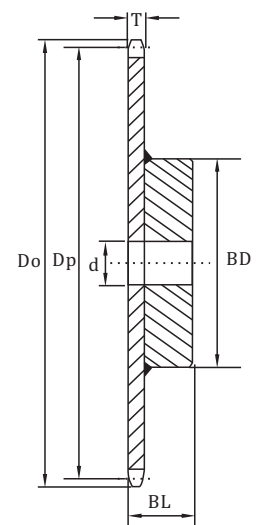
SPROCKETS	mm
Tooth width (T)	14.6

CHAIN	mm
Pitch (P)	50.80
Internal width	15.88
Roller $\Phi$ (Dr)	28.58

Teeth	S	GD
7	6	35
8		43



B Type Solid



B Type Weld

### NK 2100RB

SPROCKETS	mm
Tooth width (T)	17.6

CHAIN	mm
Pitch (P)	63.50
Internal width	19.05
Roller $\Phi$ (Dr)	39.68

Type	Teeth	Do	Dp	Bore d			BD	BL	Wt kg	Material
				Stock	Min	Max				
NK 2100RB	10	233	205.49	26	28	75	107	56	7.00	Fe360 Welding
	11	254	225.39	26	28	80	117	56	8.00	
	12	275	245.35	26	28	80	117	56	9.50	