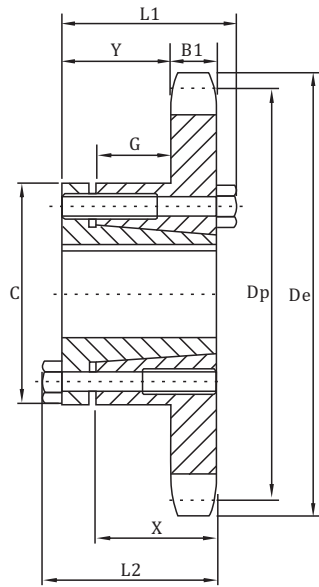


# Sprockets With QD Bushings American Standard Series

No.35

◇Pitch 3/8" ◇Roller Φ 0.200" ◇Tooth width B1 0.168"



QD-TYPE B

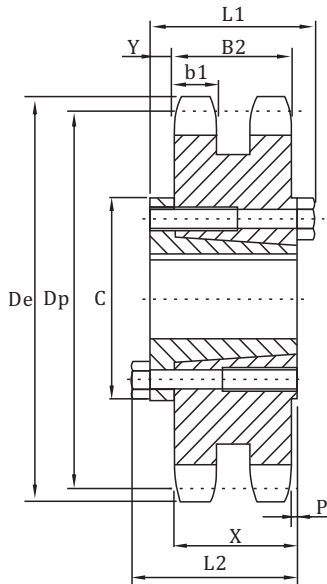
## Single-Type "QD"

No. Teeth	Number	Bushing	De	Dp	Type	Max. Bore	L1	L2	C	Y	G	X	B1	Weight(Approx.)	
														With Hub	Rim Only
19	35JA19	JA	2.470	2.278	B	1 1/4	1 1/8	1 1/8	2 1/16	53/64	29/64	5/8	.168	1.18	.28
20	35JA20	JA	2.590	2.397	B	1 1/4	1 1/8	1 1/8	2 1/16	53/64	29/64	5/8	.168	1.22	.32
21	35JA21	JA	2.710	2.516	B	1 1/4	1 1/8	1 1/8	2 1/16	53/64	29/64	5/8	.168	1.24	.34
22	35JA22	JA	2.830	2.635	B	1 1/4	1 1/8	1 1/8	2 1/16	53/64	29/64	5/8	.168	1.26	.36
23	35JA23	JA	2.950	2.754	B	1 1/4	1 1/8	1 1/8	2 1/16	53/64	29/64	5/8	.168	1.28	.38
24	35JA24	JA	3.070	2.873	B	1 1/4	1 1/8	1 1/8	2 1/16	53/64	29/64	5/8	.168	1.30	.40
25	35JA25	JA	3.190	2.992	B	1 1/4	1 1/8	1 1/8	2 1/16	53/64	29/64	5/8	.168	1.34	.44
26	35JA26	JA	3.310	3.111	B	1 1/4	1 1/8	1 1/8	2 1/16	53/64	29/64	5/8	.168	1.36	.46
27	35JA27	JA	3.430	3.230	B	1 1/4	1 1/8	1 1/8	2 1/16	53/64	29/64	5/8	.168	1.38	.48
28	35JA28	JA	3.550	3.349	B	1 1/4	1 1/8	1 1/8	2 1/16	53/64	29/64	5/8	.168	1.42	.52
30	35JA30	JA	3.790	3.588	B	1 1/4	1 1/8	1 1/8	2 1/16	53/64	29/64	5/8	.168	1.46	.56
32	35JA32	JA	4.030	3.826	B	1 1/4	1 1/8	1 1/8	2 1/16	53/64	29/64	5/8	.168	1.68	.78
35	35JA35	JA	4.390	4.183	B	1 1/4	1 1/8	1 1/8	2 1/16	53/64	29/64	5/8	.168	1.94	1.04
36	35SH36	SH	4.510	4.303	B	1 5/8	1 7/16	1 7/16	2 11/16	1 5/64	41/64	13/16	.168	2.06	1.06
40	35SH40	SH	4.990	4.780	B	1 5/8	1 7/16	1 7/16	2 11/16	1 5/64	41/64	13/16	.168	2.18	1.18
42	35SH42	SH	5.230	5.018	B	1 5/8	1 7/16	1 7/16	2 11/16	1 5/64	41/64	13/16	.168	2.26	1.26
45	35SH45	SH	5.590	5.376	B	1 5/8	1 7/16	1 7/16	2 11/16	1 5/64	41/64	13/16	.168	2.40	1.40
48	35SH48	SH	5.950	5.734	B	1 5/8	1 7/16	1 7/16	2 11/16	1 5/64	41/64	13/16	.168	2.58	1.58
54	35SH54	SH	6.660	6.449	B	1 5/8	1 7/16	1 7/16	2 11/16	1 5/64	41/64	13/16	.168	2.88	1.88
60	35SH60	SH	7.380	7.165	B	1 5/8	1 7/16	1 7/16	2 11/16	1 5/64	41/64	13/16	.168	3.28	2.28
70	35SH70	SH	8.580	8.358	B	1 5/8	1 7/16	1 7/16	2 11/16	1 5/64	41/64	13/16	.168	3.94	2.94
72	35SH72	SH	8.810	8.597	B	1 5/8	1 7/16	1 7/16	2 11/16	1 5/64	41/64	13/16	.168	4.14	3.14
80	35SH80	SH	9.770	9.552	B	1 5/8	1 7/16	1 7/16	2 11/16	1 5/64	41/64	13/16	.168	4.68	3.68
84	35SH84	SH	10.250	10.029	B	1 5/8	1 7/16	1 7/16	2 11/16	1 5/64	41/64	13/16	.168	4.86	3.96
96	35SH96	SH	11.680	11.461	B	1 5/8	1 7/16	1 7/16	2 11/16	1 5/64	41/64	13/16	.168	6.38	5.38
112	35SH112	SH	13.590	13.371	B	1 5/8	1 7/16	1 7/16	2 11/16	1 5/64	41/64	13/16	.168	7.60	6.60

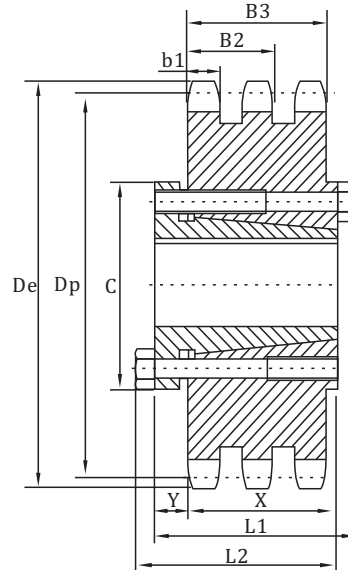
# Sprockets With QD Bushings American Standard Series

No.35-2  
No.35-3

- ◇ Pitch  $3/8"$       ◇ Roller  $\Phi$   $0.200"$
- ◇ Tooth width B1  $0.162"$       ◇ Tooth width B2  $0.561"$       ◇ Tooth width B3  $0.960"$



QD-TYPE C



QD-TYPE C

## Double-Type "QD"

No. Teeth	Number	Bushing	De	Dp	Type	Max. Bore	L1	L2	C	Y	P	X	B1	B2	Weight(Approx.)	
															With Hub	Rim Only
68	D35SDS68	SDS	8.340	8.120	C	2	1 1/2	1 1/2	3 3/16	1/16	3/16	3/4	.162	.561	8.40	7.40
72	D35SDS72	SDS	8.810	8.597	C	2	1 1/2	1 1/2	3 3/16	1/16	3/16	3/4	.162	.561	9.28	8.28
76	D35SDS76	SDS	9.290	9.074	C	2	1 1/2	1 1/2	3 3/16	1/16	3/16	3/4	.162	.561	10.32	9.32
84	D35SK84	SK	10.250	10.029	C	2 5/8	2 7/8	2 7/8	3 7/8	5/8	1 1/16	1 1/4	.162	.561	13.94	11.94
95	D35SK95	SK	11.560	11.342	C	2 5/8	2 7/8	2 7/8	3 7/8	5/8	1 1/16	1 1/4	.162	.561	17.22	15.22
96	D35SK96	SK	11.680	11.461	C	2 5/8	2 7/8	2 7/8	3 7/8	5/8	1 1/16	1 1/4	.162	.561	17.74	15.74
102	D35SK102	SK	12.400	12.177	C	2 5/8	2 7/8	2 7/8	3 7/8	5/8	1 1/16	1 1/4	.162	.561	19.76	17.76

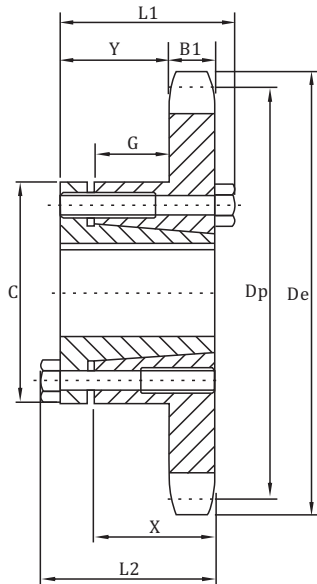
## Triple-Type "QD"

No. Teeth	Number	Bushing	De	Dp	Type	Max. Bore	L1	L2	C	Y	P	X	B1	B3	Weight(Approx.)	
															With Hub	Rim Only
68	E35SK68	SK	8.340	8.120	C1	2 5/8	2 7/8	2 7/8	3 7/8	5/8	1 9/64	1 1/4	.162	.960	13.90	11.90
72	E35SK72	SK	8.810	8.597	C1	2 5/8	2 7/8	2 7/8	3 7/8	5/8	1 9/64	1 1/4	.162	.960	15.56	13.56
76	E35SK76	SK	9.290	9.074	C1	2 5/8	2 7/8	2 7/8	3 7/8	5/8	1 9/64	1 1/4	.162	.960	17.42	15.42
84	E35SK84	SK	10.250	10.029	C1	2 5/8	2 7/8	2 7/8	3 7/8	5/8	1 9/64	1 1/4	.162	.960	20.92	18.92
95	E35SK95	SK	11.560	11.342	C1	2 5/8	2 7/8	2 7/8	3 7/8	5/8	1 9/64	1 1/4	.162	.960	26.76	24.76
96	E35SK96	SK	11.680	11.461	C1	2 5/8	2 7/8	2 7/8	3 7/8	5/8	1 9/64	1 1/4	.162	.960	27.58	25.58
102	E35SK102	SK	12.400	12.177	C1	2 5/8	2 7/8	2 7/8	3 7/8	5/8	1 9/64	1 1/4	.162	.960	31.18	29.18

# Sprockets With QD Bushings American Standard Series

No.41

◇ Pitch 1/2" ◇ Roller Φ 0.306" ◇ Tooth width B1 0.227"



QD-TYPE B



## Single-Type "QD"

No. Teeth	Number	Bushing	De	Dp	Type	Max. Bore	L1	L2	C	Y	G	X	B1	Weight(Approx.)	
														With Hub	Rim Only
15	41JA15	JA	2.650	2.405	B	1 1/4	1 1/8	1 1/8	2 1/16	49/64	25/64	5/8	.227	1.22	.32
16	41JA16	JA	2.810	2.563	B	1 1/4	1 1/8	1 1/8	2 1/16	49/64	25/64	5/8	.227	1.30	.40
17	41JA17	JA	2.980	2.721	B	1 1/4	1 1/8	1 1/8	2 1/16	49/64	25/64	5/8	.227	1.40	.50
18	41JA18	JA	3.140	2.879	B	1 1/4	1 1/8	1 1/8	2 1/16	49/64	25/64	5/8	.227	1.50	.60
19	41JA19	JA	3.300	3.038	B	1 1/4	1 1/8	1 1/8	2 1/16	49/64	25/64	5/8	.227	1.58	.68
20	41JSH20	SH	3.460	3.196	B	1 5/8	1 7/16	1 7/16	2 1/16	1 1/32	37/64	13/16	.227	1.78	.78
21	41SH21	SH	3.620	3.355	B	1 5/8	1 7/16	1 7/16	2 1/16	1 1/32	37/64	13/16	.227	1.82	.82
22	41SH22	SH	3.780	3.513	B	1 5/8	1 7/16	1 7/16	2 1/16	1 1/32	37/64	13/16	.227	2.06	1.06
23	41SH23	SH	3.940	3.672	B	1 5/8	1 7/16	1 7/16	2 1/16	1 1/32	37/64	13/16	.227	2.14	1.14
24	41SH24	SH	4.100	3.831	B	1 5/8	1 7/16	1 7/16	2 1/16	1 1/32	37/64	13/16	.227	2.16	1.16
25	41SH25	SH	4.260	3.989	B	1 5/8	1 7/16	1 7/16	2 1/16	1 1/32	37/64	13/16	.227	2.22	1.22
26	41SH26	SH	4.420	4.148	B	1 5/8	1 7/16	1 7/16	2 1/16	1 1/32	37/64	13/16	.227	2.26	1.26
27	41SH27	SH	4.580	4.307	B	1 5/8	1 7/16	1 7/16	2 1/16	1 1/32	37/64	13/16	.227	2.40	1.40
28	41SH28	SH	4.740	4.466	B	1 5/8	1 7/16	1 7/16	2 1/16	1 1/32	37/64	13/16	.227	2.54	1.54
30	41SH30	SH	5.060	4.783	B	1 5/8	1 7/16	1 7/16	2 1/16	1 1/32	37/64	13/16	.227	2.58	1.58
32	41SH32	SH	5.380	5.101	B	1 5/8	1 7/16	1 7/16	2 1/16	1 1/32	37/64	13/16	.227	2.68	1.68
35	41SH35	SH	5.860	5.578	B	1 5/8	1 7/16	1 7/16	2 1/16	1 1/32	37/64	13/16	.227	3.46	2.47
36	41SDS36	SDS	6.020	5.737	B	2	1 1/2	1 1/2	3 3/16	1 3/32	17/32	3/4	.227	2.92	1.92
40	41SDS40	SDS	6.650	6.373	B	2	1 1/2	1 1/2	3 3/16	1 3/32	17/32	3/4	.227	3.32	2.32
42	41SDS42	SDS	6.970	6.691	B	2	1 1/2	1 1/2	3 3/16	1 3/32	17/32	3/4	.227	3.44	2.44
45	41SDS45	SDS	7.450	7.168	B	2	1 1/2	1 1/2	3 3/16	1 3/32	17/32	3/4	.227	3.76	2.76
48	41SDS48	SDS	7.930	7.645	B	2	1 1/2	1 1/2	3 3/16	1 3/32	17/32	3/4	.227	4.36	3.36
54	41SDS54	SDS	8.890	8.599	B	2	1 1/2	1 1/2	3 3/16	1 3/32	17/32	3/4	.227	4.98	3.98
60	41SDS60	SDS	9.840	9.554	B	2	1 1/2	1 1/2	3 3/16	1 3/32	17/32	3/4	.227	6.54	5.54
70	41SK70	SK	11.430	11.145	B	2 5/8	2 1/8	2 1/8	3 7/8	1 41/64	1 1/32	1 1/4	.227	9.42	7.42
72	41SK72	SK	11.750	11.463	B	2 5/8	2 1/8	2 1/8	3 7/8	1 41/64	1 1/32	1 1/4	.227	10.02	8.02
80	41SK80	SK	13.030	12.736	B	2 5/8	2 1/8	2 1/8	3 7/8	1 41/64	1 1/32	1 1/4	.227	11.64	9.64
84	41SK84	SK	13.660	13.372	B	2 5/8	2 1/8	2 1/8	3 7/8	1 41/64	1 1/32	1 1/4	.227	12.40	10.40
96	41SK96	SK	15.570	15.281	B	2 5/8	2 1/8	2 1/8	3 7/8	1 41/64	1 1/32	1 1/4	.227	14.82	12.82
112	41SK112	SK	18.120	17.828	B	2 5/8	2 1/8	2 1/8	3 7/8	1 41/64	1 1/32	1 1/4	.227	19.28	17.28

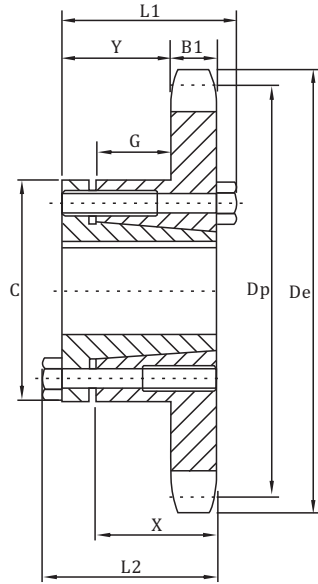
# Sprockets With QD Bushings American Standard Series

No.40

◇ Pitch 1/2" ◇ Roller Φ 0.312" ◇ Tooth width B1 0.284"

## Single-Type "QD" With Hardened Teeth

No. Teeth	Number
15	40JA15H
16	40JA16H
17	40JA17H
18	40JA18H
19	40JA19H
20	40SH20H
21	40SH21H
22	40SH22H
23	40SH23H
24	40SH24H
25	40SH25H
26	40SH26H
27	40SH27H
28	40SH28H
30	40SH30H



QD-TYPE B

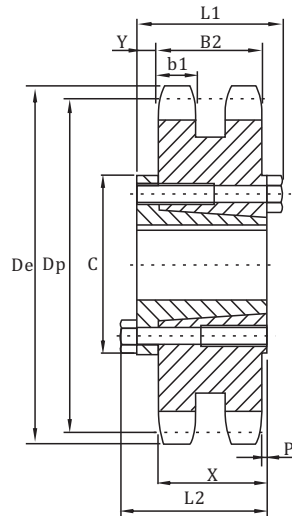
## Single-Type "QD"

No. Teeth	Number	Bushing	De	Dp	Type	Max. Bore	L1	L2	C	Y	G	X	B1	Weight(Approx.)	
														With Hub	Rim Only
15	40JA15	JA	2.650	2.405	B	1 1/4	1 1/8	1 1/8	2 1/16	23/32	11/32	5/8	.284	1.24	.34
16	40JA16	JA	2.810	2.563	B	1 1/4	1 1/8	1 1/8	2 1/16	23/32	11/32	5/8	.284	1.30	.40
17	40JA17	JA	2.980	2.721	B	1 1/4	1 1/8	1 1/8	2 1/16	23/32	11/32	5/8	.284	1.38	.48
18	40JA18	JA	3.140	2.879	B	1 1/4	1 1/8	1 1/8	2 1/16	23/32	11/32	5/8	.284	1.44	.54
19	40JA19	JA	3.300	3.038	B	1 1/4	1 1/8	1 1/8	2 1/16	23/32	11/32	5/8	.284	1.50	.60
20	40SH20	SH	3.460	3.196	B	1 5/8	1 7/16	1 7/16	2 11/16	31/32	17/32	13/16	.284	1.76	.76
21	40SH21	SH	3.620	3.355	B	1 5/8	1 7/16	1 7/16	2 11/16	31/32	17/32	13/16	.284	1.84	.84
22	40SH22	SH	3.780	3.513	B	1 5/8	1 7/16	1 7/16	2 11/16	31/32	17/32	13/16	.284	1.92	.92
23	40SH23	SH	3.940	3.672	B	1 5/8	1 7/16	1 7/16	2 11/16	31/32	17/32	13/16	.284	2.14	1.14
24	40SH24	SH	4.100	3.831	B	1 5/8	1 7/16	1 7/16	2 11/16	31/32	17/32	13/16	.284	2.22	1.22
25	40SH25	SH	4.260	3.989	B	1 5/8	1 7/16	1 7/16	2 11/16	31/32	17/32	13/16	.284	2.30	1.30
26	40SH26	SH	4.420	4.148	B	1 5/8	1 7/16	1 7/16	2 11/16	31/32	17/32	13/16	.284	2.44	1.44
27	40SH27	SH	4.580	4.307	B	1 5/8	1 7/16	1 7/16	2 11/16	31/32	17/32	13/16	.284	2.46	1.46
28	40SH28	SH	4.740	4.466	B	1 5/8	1 7/16	1 7/16	2 11/16	31/32	17/32	13/16	.284	2.54	1.54
30	40SH30	SH	5.060	4.783	B	1 5/8	1 7/16	1 7/16	2 11/16	31/32	17/32	13/16	.284	2.72	1.72
32	40SH32	SH	5.380	5.101	B	1 5/8	1 7/16	1 7/16	2 11/16	31/32	17/32	13/16	.284	2.90	1.90
35	40SH35	SH	5.860	5.578	B	1 5/8	1 7/16	1 7/16	2 11/16	31/32	17/32	13/16	.284	3.22	2.22
36	40SDS36	SDS	6.020	5.737	B	2	1 1/2	1 1/2	3 3/16	1 1/32	15/32	3/4	.284	3.20	2.20
40	40SDS40	SDS	6.650	6.373	B	2	1 1/2	1 1/2	3 3/16	1 1/32	15/32	3/4	.284	3.72	2.72
42	40SDS42	SDS	6.970	6.691	B	2	1 1/2	1 1/2	3 3/16	1 1/32	15/32	3/4	.284	3.92	2.92
45	40SDS45	SDS	7.450	7.168	B	2	1 1/2	1 1/2	3 3/16	1 1/32	15/32	3/4	.284	4.32	3.32
48	40SDS48	SDS	7.930	7.645	B	2	1 1/2	1 1/2	3 3/16	1 1/32	15/32	3/4	.284	4.70	3.70
54	40SDS54	SDS	8.890	8.599	B	2	1 1/2	1 1/2	3 3/16	1 1/32	15/32	3/4	.284	5.78	4.78
60	40SDS60	SDS	9.840	9.554	B	2	1 1/2	1 1/2	3 3/16	1 1/32	15/32	3/4	.284	6.86	5.86
70	40SK70	SK	11.430	11.145	B	2 5/8	2 1/8	2 1/8	3 7/8	1 19/32	31/32	1 1/4	.284	10.68	8.68
72	40SK72	SK	11.750	11.463	B	2 5/8	2 1/8	2 1/8	3 7/8	1 19/32	31/32	1 1/4	.284	10.84	8.84
80	40SK80	SK	13.030	12.736	B	2 5/8	2 1/8	2 1/8	3 7/8	1 19/32	31/32	1 1/4	.284	13.20	11.20
84	40SK84	SK	13.660	13.372	B	2 5/8	2 1/8	2 1/8	3 7/8	1 19/32	31/32	1 1/4	.284	13.56	11.56
96	40SK96	SK	15.570	15.281	B	2 5/8	2 1/8	2 1/8	3 7/8	1 19/32	31/32	1 1/4	.284	17.76	15.76
112	40SK112	SK	18.120	17.828	B	2 5/8	2 1/8	2 1/8	3 7/8	1 19/32	31/32	1 1/4	.284	22.28	20.28

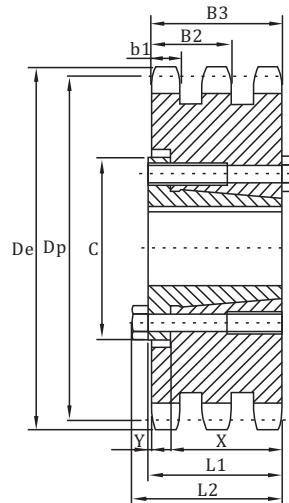
# Sprockets With QD Bushings American Standard Series

No.40-2  
No.40-3

◇ Pitch 1/2"    ◇ Roller Φ 0.312"  
◇ Tooth width B1 0.275"    ◇ Tooth width B2 0.841"    ◇ Tooth width B3 1.407"



QD-TYPE C



QD-TYPE B

## Double-Type "QD"

No. Teeth	Number	Bushing	De	Dp	Type	Max. Bore	L1	L2	C	Y	P	X	B1	B2	Weight(Approx.)	
															With Hub	Rim Only
36	D40SK36	SK	6.020	5.737	C	2 5/8	2 1/8	2 1/8	3 7/8	5/8	13/32	1 1/4	.275	.841	6.68	4.68
40	D40SK40	SK	6.650	6.373	C	2 5/8	2 1/8	2 1/8	3 7/8	5/8	13/32	1 1/4	.275	.841	8.02	6.02
42	D40SK42	SK	6.970	6.691	C	2 5/8	2 1/8	2 1/8	3 7/8	5/8	13/32	1 1/4	.275	.841	8.82	6.82
45	D40SK45	SK	7.450	7.168	C	2 5/8	2 1/8	2 1/8	3 7/8	5/8	13/32	1 1/4	.275	.841	9.98	7.98
48	D40SK48	SK	7.930	7.645	C	2 5/8	2 1/8	2 1/8	3 7/8	5/8	13/32	1 1/4	.275	.841	11.22	9.22
52	D40SK52	SK	8.570	8.281	C	2 5/8	2 1/8	2 1/8	3 7/8	5/8	13/32	1 1/4	.275	.841	13.04	11.04
54	D40SK54	SK	8.890	8.599	C	2 5/8	2 1/8	2 1/8	3 7/8	5/8	13/32	1 1/4	.275	.841	14.06	12.06
60	D40SK60	SK	9.840	9.554	C	2 5/8	2 1/8	2 1/8	3 7/8	5/8	13/32	1 1/4	.275	.841	16.98	14.98
68	D40SF68	SF	11.120	10.826	C	2 15/16	2 1/4	2 1/4	4 5/8	3/4	13/32	1 1/4	.275	.841	22.72	19.72
72	D40SF72	SF	11.750	11.463	C	2 15/16	2 1/4	2 1/4	4 5/8	3/4	13/32	1 1/4	.275	.841	24.20	22.20
76	D40SF76	SF	12.390	12.099	C	2 15/16	2 1/4	2 1/4	4 5/8	3/4	13/32	1 1/4	.275	.841	28.20	25.20
84	D40SF84	SF	13.660	13.372	C	2 15/16	2 1/4	2 1/4	4 5/8	3/4	13/32	1 1/4	.275	.841	33.64	30.64
95	D40SF95	SF	15.410	15.122	C	2 15/16	2 1/4	2 1/4	4 5/8	3/4	13/32	1 1/4	.275	.841	40.22	37.22
102	D40SF102	SF	16.530	16.236	C	2 15/16	2 1/4	2 1/4	4 5/8	3/4	13/32	1 1/4	.275	.841	42.70	39.70
112	D40SF112	SF	18.120	17.828	C	2 15/16	2 1/4	2 1/4	4 5/8	3/4	13/32	1 1/4	.275	.841	52.60	49.60

## Triple-Type "QD"

No. Teeth	Number	Bushing	De	Dp	Type	Max. Bore	L1	L2	C	Y	X	B1	B3	Weight(Approx.)	
														With Hub	Rim Only
36	E40SK36	SK	6.020	5.737	B	2 5/8	2 1/8	2 1/8	3 7/8	15/32	1 1/4	.275	1.407	8.16	6.16
42	E40SK42	SK	6.970	6.691	B	2 5/8	2 1/8	2 1/8	3 7/8	15/32	1 1/4	.275	1.407	11.92	9.52
48	E40SK48	SK	7.930	7.645	B	2 5/8	2 1/8	2 1/8	3 7/8	15/32	1 1/4	.275	1.407	15.13	13.16
52	E40SK52	SK	8.570	8.281	B	2 5/8	2 1/8	2 1/8	3 7/8	15/32	1 1/4	.275	1.407	18.08	16.08
60	E40SK60	SK	9.840	9.554	B	2 5/8	2 1/8	2 1/8	3 7/8	15/32	1 1/4	.275	1.407	24.60	22.06
68	E40SF68	SF	11.120	10.826	B	2 15/16	2 1/4	2 1/4	4 5/8	19/32	1 1/4	.275	1.407	31.98	29.98
72	E40SF72	SF	11.750	11.463	B	2 15/16	2 1/4	2 1/4	4 5/8	19/32	1 1/4	.275	1.407	37.40	34.40
76	E40SF76	SF	12.390	12.099	B	2 15/16	2 1/4	2 1/4	4 5/8	19/32	1 1/4	.275	1.407	51.92	48.92
84	E40SF84	SF	13.660	13.372	B	2 15/16	2 1/4	2 1/4	4 5/8	19/32	1 1/4	.275	1.407	56.70	53.78
95	E40SF95	SF	15.410	15.122	B	2 15/16	2 1/4	2 1/4	4 5/8	19/32	1 1/4	.275	1.407	58.94	55.94
102	E40SF102	SF	16.530	16.236	B	2 15/16	2 1/4	2 1/4	4 5/8	19/32	1 1/4	.275	1.407	62.24	59.24

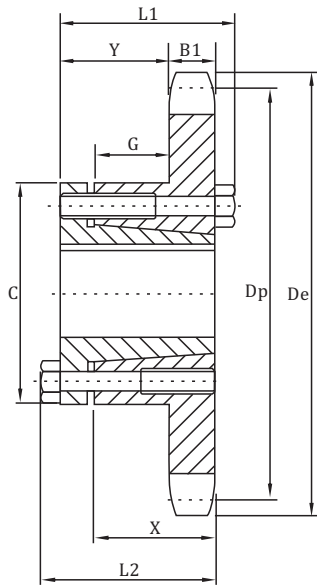
# Sprockets With QD Bushings American Standard Series

No.50

◇ Pitch 5/8"    ◇ Roller Φ 0.400"    ◇ Tooth width B1 0.343"

## Single-Type "QD" With Hardened Teeth

No. Teeth	Number
12	50JA12H
13	50JA13H
14	50JA14H
15	50JA15H
16	50JA16H
17	50SH17H
18	50SH18H
19	50SH19H
20	50SDS20H
21	50SDS21H
22	50SDS22H
23	50SDS23H
24	50SDS24H
25	50SDS25H
26	50SDS26H
27	50SDS27H
28	50SDS28H
30	50SDS30H



QD-TYPE B

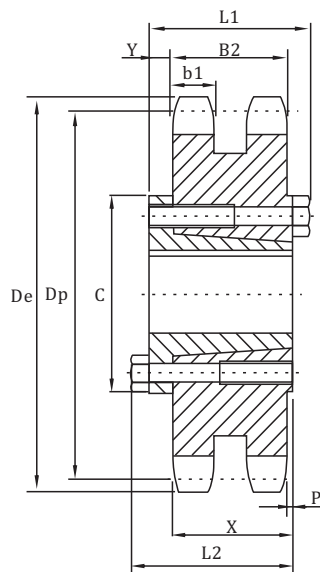
## Single-Type "QD"

No. Teeth	Number	Bushing	De	Dp	Type	Max. Bore	L1	L2	C	Y	G	X	B1	Weight(Approx.)	
														With Hub	Rim Only
12	50JA12	JA	2.710	2.415	B	1 1/4	1 1/8	1 1/8	2 1/16	2 1/32	9/32	5/8	.343	1.24	.34
13	50JA13	JA	2.910	2.612	B	1 1/4	1 1/8	1 1/8	2 1/16	2 1/32	9/32	5/8	.343	1.30	.40
14	50JA14	JA	3.110	2.803	B	1 1/4	1 1/8	1 1/8	2 1/16	2 1/32	9/32	5/8	.343	1.45	.52
15	50JA15	JA	3.320	3.006	B	1 1/4	1 1/8	1 1/8	2 1/16	2 1/32	9/32	5/8	.343	1.50	.60
16	50JA16	JA	3.520	3.204	B	1 1/4	1 1/8	1 1/8	2 1/16	2 1/32	9/32	5/8	.343	1.58	.68
17	50SH17	SH	3.720	3.401	B	1 5/8	1 7/16	1 7/16	2 11/16	2 9/32	15/32	13/16	.343	1.84	.84
18	50SH18	SH	3.920	3.599	B	1 5/8	1 7/16	1 7/16	2 11/16	2 9/32	15/32	13/16	.343	2.04	1.04
19	50SH19	SH	4.120	3.797	B	1 5/8	1 7/16	1 7/16	2 11/16	2 9/32	15/32	13/16	.343	2.24	1.24
20	50SDS20	SDS	4.320	3.995	B	2	1 1/2	1 1/2	3 3/16	3 1/32	13/32	3/4	.343	2.20	1.20
21	50SDS21	SDS	4.520	4.194	B	2	1 1/2	1 1/2	3 3/16	3 1/32	13/32	3/4	.343	2.32	1.32
22	50SDS22	SDS	4.720	4.392	B	2	1 1/2	1 1/2	3 3/16	3 1/32	13/32	3/4	.343	2.48	1.42
23	50SDS23	SDS	4.920	4.590	B	2	1 1/2	1 1/2	3 3/16	3 1/32	13/32	3/4	.343	2.58	1.58
24	50SDS24	SDS	5.120	4.788	B	2	1 1/2	1 1/2	3 3/16	3 1/32	13/32	3/4	.343	2.70	1.70
25	50SDS25	SDS	5.320	4.987	B	2	1 1/2	1 1/2	3 3/16	3 1/32	13/32	3/4	.343	2.86	1.86
26	50SDS26	SDS	5.520	5.185	B	2	1 1/2	1 1/2	3 3/16	3 1/32	13/32	3/4	.343	3.00	2.00
27	50SDS27	SDS	5.720	5.384	B	2	1 1/2	1 1/2	3 3/16	3 1/32	13/32	3/4	.343	3.12	2.12
28	50SDS28	SDS	5.920	5.582	B	2	1 1/2	1 1/2	3 3/16	3 1/32	13/32	3/4	.343	3.32	2.32
30	50SDS30	SDS	6.320	5.979	B	2	1 1/2	1 1/2	3 3/16	3 1/32	13/32	3/4	.343	3.64	2.64
32	50SDS32	SDS	6.720	6.376	B	2	1 1/2	1 1/2	3 3/16	3 1/32	13/32	3/4	.343	3.98	2.98
35	50SDS35	SDS	7.320	6.972	B	2	1 1/2	1 1/2	3 3/16	3 1/32	13/32	3/4	.343	4.62	3.62
36	50SDS36	SDS	7.520	7.171	B	2	1 1/2	1 1/2	3 3/16	3 1/32	13/32	3/4	.343	4.64	3.64
40	50SDS40	SDS	8.320	7.966	B	2	1 1/2	1 1/2	3 3/16	3 1/32	13/32	3/4	.343	5.74	4.74
42	50SDS42	SDS	8.720	8.363	B	2	1 1/2	1 1/2	3 3/16	3 1/32	13/32	3/4	.343	6.40	5.40
45	50SDS45	SDS	9.310	8.960	B	2	1 1/2	1 1/2	3 3/16	3 1/32	13/32	3/4	.343	6.90	5.90
48	50SDS48	SDS	9.910	9.556	B	2	1 1/2	1 1/2	3 3/16	3 1/32	13/32	3/4	.343	7.66	6.66
54	50SK54	SK	11.110	10.749	B	2 5/8	2 1/8	2 1/8	3 7/8	1 17/32	2 9/32	1 1/4	.343	11.68	9.68
60	50SK60	SK	12.300	11.942	B	2 5/8	2 1/8	2 1/8	3 7/8	1 17/32	2 9/32	1 1/4	.343	13.88	11.88
70	50SK70	SK	14.290	13.931	B	2 5/8	2 1/8	2 1/8	3 7/8	1 17/32	2 9/32	1 1/4	.343	17.52	15.52
72	50SK72	SK	14.690	14.329	B	2 5/8	2 1/8	2 1/8	3 7/8	1 17/32	2 9/32	1 1/4	.343	18.44	16.44
80	50SF80	SF	16.280	15.920	B	2 15/16	2 1/4	2 1/4	4 5/8	1 21/32	2 9/32	1 1/4	.343	22.90	19.90
84	50SF84	SF	17.080	16.715	B	2 15/16	2 1/4	2 1/4	4 5/8	1 21/32	2 9/32	1 1/4	.343	25.98	22.98
96	50SF96	SF	19.470	19.102	B	2 15/16	2 1/4	2 1/4	4 5/8	1 21/32	2 9/32	1 1/4	.343	32.88	29.88
112	50SF112	SF	22.650	22.285	B	2 15/16	2 1/4	2 1/4	4 5/8	1 21/32	2 9/32	1 1/4	.343	43.10	40.10

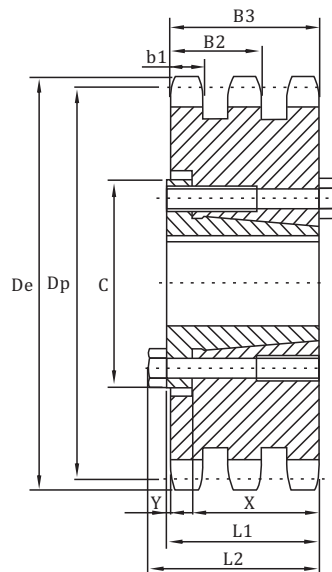
# Sprockets With QD Bushings American Standard Series

No.50-2  
No.50-3

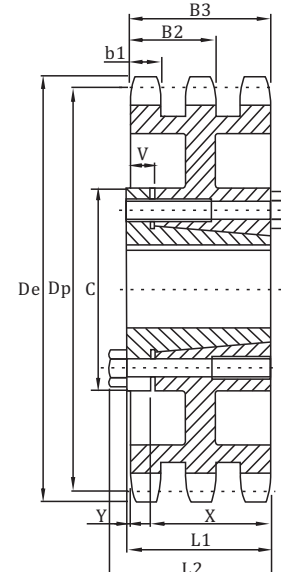
◇ Pitch 5/8"    ◇ Roller Φ 0.400"  
◇ Tooth width B1 0.332"    ◇ Tooth width B2 1.045"    ◇ Tooth width B3 1.758"



QD-TYPE C



QD-TYPE B



QD-TYPE B1

## Double-Type "QD"

No. Teeth	Number	Bushing	De	Dp	Type	Max. Bore	L1	L2	C	Y	P	X	B1	B2	Weight(Approx.)	
															With Hub	Rim Only
36	D50SK36	SK	7.520	7.171	C	2 5/8	2 1/8	2 1/8	3 7/8	5/8	13/64	1 1/4	.332	1.045	11.08	9.08
42	D50SK42	SK	8.720	8.363	C	2 5/8	2 1/8	2 1/8	3 7/8	5/8	13/64	1 1/4	.332	1.045	15.16	13.16
48	D50SK48	SK	9.910	9.556	C	2 5/8	2 1/8	2 1/8	3 7/8	5/8	13/64	1 1/4	.332	1.045	19.90	17.90
52	D50SF52	SF	10.710	10.351	C	2 15/16	2 1/4	2 1/4	4 5/8	3/4	13/64	1 1/4	.332	1.045	24.26	21.26
54	D50SF54	SF	11.110	10.749	C	2 15/16	2 1/4	2 1/4	4 5/8	3/4	13/64	1 1/4	.332	1.045	26.18	23.18
60	D50SF60	SF	12.300	11.942	C	2 15/16	2 1/4	2 1/4	4 5/8	3/4	13/64	1 1/4	.332	1.045	32.12	29.12
68	D50SF68	SF	13.890	13.533	C	2 15/16	2 1/4	2 1/4	4 5/8	3/4	13/64	1 1/4	.332	1.045	41.16	38.16
72	D50SF72	SF	14.690	14.329	C	2 15/16	2 1/4	2 1/4	4 5/8	3/4	13/64	1 1/4	.332	1.045	46.28	43.26
76	D50SF76	SF	15.490	15.124	C	2 15/16	2 1/4	2 1/4	4 5/8	3/4	13/64	1 1/4	.332	1.045	47.00	44.00
84	D50SF84	SF	17.080	16.715	C	2 15/16	2 1/4	2 1/4	4 5/8	3/4	13/64	1 1/4	.332	1.045	48.89	45.88
95	D50SF95	SF	19.270	18.903	C	2 15/16	2 1/4	2 1/4	4 5/8	3/4	13/64	1 1/4	.332	1.045	61.80	58.88
102	D50SF102	SF	20.660	20.295	C	2 15/16	2 1/4	2 1/4	4 5/8	3/4	13/64	1 1/4	.332	1.045	69.02	66.02
112	D50SF112	SF	22.650	22.285	C	2 15/16	2 1/4	2 1/4	4 5/8	3/4	13/64	1 1/4	.332	1.045	88.26	85.26

## Triple-Type "QD"

No. Teeth	Number	Bushing	De	Dp	Type	Max. Bore	L1	L2	C	Y	V	X	B1	B3	Weight(Approx.)	
															With Hub	Rim Only
36	E40SK36	SK	7.520	7.171	B	2 5/8	2 1/8	2 1/8	3 7/8	1/8		1 1/4	.332	1.758	14.8	12.8
42	E40SK42	SK	8.720	8.363	B	2 5/8	2 1/8	2 1/8	3 7/8	1/8		1 1/4	.332	1.758	21.5	19.5
48	E40SK48	SK	9.910	9.556	B	2 5/8	2 1/8	2 1/8	3 7/8	1/8		1 1/4	.332	1.758	29.6	27.6
52	E40SK52	SF	10.710	10.351	B	2 15/16	2 1/4	2 1/4	4 5/8	1/4		1 1/4	.332	1.758	31.6	28.6
60	E40SK60	SF	12.300	11.942	B	2 15/16	2 1/4	2 1/4	4 5/8	1/4		1 1/4	.332	1.758	42.1	39.1
68	E40SF68	SF	13.890	13.533	B	2 15/16	2 1/4	2 1/4	4 5/8	1/4		1 1/4	.332	1.758	53.8	50.8
72	E40SF72	SF	14.690	14.329	B1	2 15/16	2 1/4	2 1/4	4 5/8	1/4	1/2	1 1/4	.332	1.758	46.6	43.6
76	E40SF76	SF	15.490	15.124	B1	2 15/16	2 1/4	2 1/4	4 5/8	1/4	1/2	1 1/4	.332	1.758	49.9	46.9
84	E40SF84	SF	17.080	16.715	B1	2 15/16	2 1/4	2 1/4	4 5/8	1/4	1/2	1 1/4	.332	1.758	53.9	50.9
95	E40SF95	SF	19.270	18.903	B1	2 15/16	2 1/4	2 1/4	4 5/8	1/4	1/2	1 1/4	.332	1.758	62.3	59.3
102	E40SF102	SF	20.660	20.295	B1	2 15/16	2 1/4	2 1/4	4 5/8	1/4	1/2	1 1/4	.332	1.758	69.3	66.3

NOTE: Triple 50 stock sprockets with 25 teeth or less have hardened teeth.

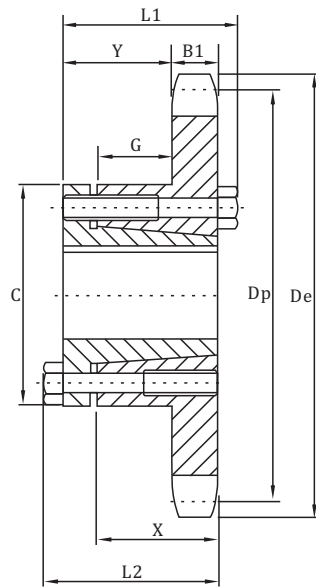
# Sprockets With QD Bushings American Standard Series

No.60

◇ Pitch 3/4" ◇ Roller Φ 0.468" ◇ Tooth width B1 0.459"

## Single-Type "QD" With Hardened Teeth

No. Teeth	Number
11	60JA11H
12	60JA12H
13	60JA13H
14	60SH14H
15	60SH15H
16	60SH16H
17	60SDS17H
18	60SDS18H
19	60SDS19H
20	60SDS20H
21	60SDS21H
22	60SDS22H
23	60SDS23H
24	60SDS24H
25	60SDS25H
26	60SK26H
27	60SK27H
28	60SK28H
30	60SK30H



QD-TYPE B

## Single-Type "QD"

No. Teeth	Number	Bushing	De	Dp	Type	Max. Bore	L1	L2	C	Y	G	X	B1	Weight(Approx.)	
														With Hub	Rim Only
11	60JA11	JA	3.000	2.662	B	1 1/4	1 1/8	1 1/8	2 1/16	35/64	11/64	5/8	.459	1.36	.46
12	60JA12	JA	3.250	2.898	B	1 1/4	1 1/8	1 1/8	2 1/16	35/64	11/64	5/8	.459	1.50	.60
13	60JA13	JA	3.490	3.134	B	1 1/4	1 1/8	1 1/8	2 1/16	35/64	11/64	5/8	.459	1.66	.76
14	60SH14	SH	3.740	3.371	B	1 5/8	1 7/16	1 7/16	2 1/16	51/64	23/64	13/16	.459	1.88	.88
15	60SH15	SH	3.980	3.607	B	1 5/8	1 7/16	1 7/16	2 1/16	51/64	23/64	13/16	.459	2.08	1.08
16	60SH16	SH	4.220	3.844	B	1 5/8	1 7/16	1 7/16	2 1/16	51/64	23/64	13/16	.459	2.26	1.26
17	60SDS17	SDS	4.460	4.082	B	2	1 1/2	1 1/2	3 3/16	55/64	19/64	3/4	.459	2.38	1.38
18	60SDS18	SDS	4.700	4.319	B	2	1 1/2	1 1/2	3 3/16	55/64	19/64	3/4	.459	2.56	1.56
19	60SDS19	SDS	4.950	4.557	B	2	1 1/2	1 1/2	3 3/16	55/64	19/64	3/4	.459	2.76	1.76
20	60SDS20	SDS	5.190	4.794	B	2	1 1/2	1 1/2	3 3/16	55/64	19/64	3/4	.459	3.00	2.00
21	60SDS21	SDS	5.430	5.032	B	2	1 1/2	1 1/2	3 3/16	55/64	19/64	3/4	.459	3.20	2.20
22	60SDS22	SDS	5.670	5.270	B	2	1 1/2	1 1/2	3 3/16	55/64	19/64	3/4	.459	3.44	2.44
23	60SDS23	SDS	5.910	5.508	B	2	1 1/2	1 1/2	3 3/16	55/64	19/64	3/4	.459	3.70	2.70
24	60SDS24	SDS	6.150	5.746	B	2	1 1/2	1 1/2	3 3/16	55/64	19/64	3/4	.459	3.94	2.94
25	60SDS25	SDS	6.390	5.984	B	2	1 1/2	1 1/2	3 3/16	55/64	19/64	3/4	.459	4.24	3.24
26	60SK26	SK	6.630	6.222	B	2 5/8	2 1/8	2 1/8	3 7/8	1 27/64	51/64	1 1/4	.459	6.18	4.18
27	60SK27	SK	6.870	6.460	B	2 5/8	2 1/8	2 1/8	3 7/8	1 27/64	51/64	1 1/4	.459	6.52	4.52
28	60SK28	SK	7.110	6.699	B	2 5/8	2 1/8	2 1/8	3 7/8	1 27/64	51/64	1 1/4	.459	6.72	4.72
30	60SK30	SK	7.590	7.175	B	2 5/8	2 1/8	2 1/8	3 7/8	1 27/64	51/64	1 1/4	.459	7.34	5.34
32	60SK32	SK	8.070	7.652	B	2 5/8	2 1/8	2 1/8	3 7/8	1 27/64	51/64	1 1/4	.459	8.10	6.10
35	60SK35	SK	8.780	8.367	B	2 5/8	2 1/8	2 1/8	3 7/8	1 27/64	51/64	1 1/4	.459	9.42	7.42
36	60SK36	SK	9.020	8.605	B	2 5/8	2 1/8	2 1/8	3 7/8	1 27/64	51/64	1 1/4	.459	9.70	7.70
40	60SK40	SK	9.980	9.559	B	2 5/8	2 1/8	2 1/8	3 7/8	1 27/64	51/64	1 1/4	.459	11.56	9.56
42	60SF42	SF	10.460	10.036	B	2 15/16	2 1/4	2 1/4	4 5/8	1 35/64	51/64	1 1/4	.459	13.78	10.78
45	60SF45	SF	11.180	10.752	B	2 15/16	2 1/4	2 1/4	4 5/8	1 35/64	51/64	1 1/4	.459	15.40	12.40
48	60SF48	SF	11.890	11.467	B	2 15/16	2 1/4	2 1/4	4 5/8	1 35/64	51/64	1 1/4	.459	17.26	14.26
54	60SF54	SF	13.330	12.899	B	2 15/16	2 1/4	2 1/4	4 5/8	1 35/64	51/64	1 1/4	.459	20.02	17.02
60	60SF60	SF	14.760	14.331	B	2 15/16	2 1/4	2 1/4	4 5/8	1 35/64	51/64	1 1/4	.459	23.76	20.76
70	60SF70	SF	17.150	16.717	B	2 15/16	2 1/4	2 1/4	4 5/8	1 35/64	51/64	1 1/4	.459	31.60	28.60
72	60SF72	SF	17.630	17.194	B	2 15/16	2 1/4	2 1/4	4 5/8	1 35/64	51/64	1 1/4	.459	32.58	29.58
80	60SF80	SF	19.540	19.103	B	2 15/16	2 1/4	2 1/4	4 5/8	1 35/64	51/64	1 1/4	.459	41.24	38.24
84	60SF84	SF	20.490	20.058	B	2 15/16	2 1/4	2 1/4	4 5/8	1 35/64	51/64	1 1/4	.459	43.94	40.94
96	60SF96	SF	23.360	22.922	B	2 15/16	2 1/4	2 1/4	4 5/8	1 35/64	51/64	1 1/4	.459	55.40	52.40
112	60E112	E	27.180	26.742	B1	3 1/2	2 15/16	2 5/8	6	2 3/16	1 11/64	1 5/8	.459	83.76	73.76

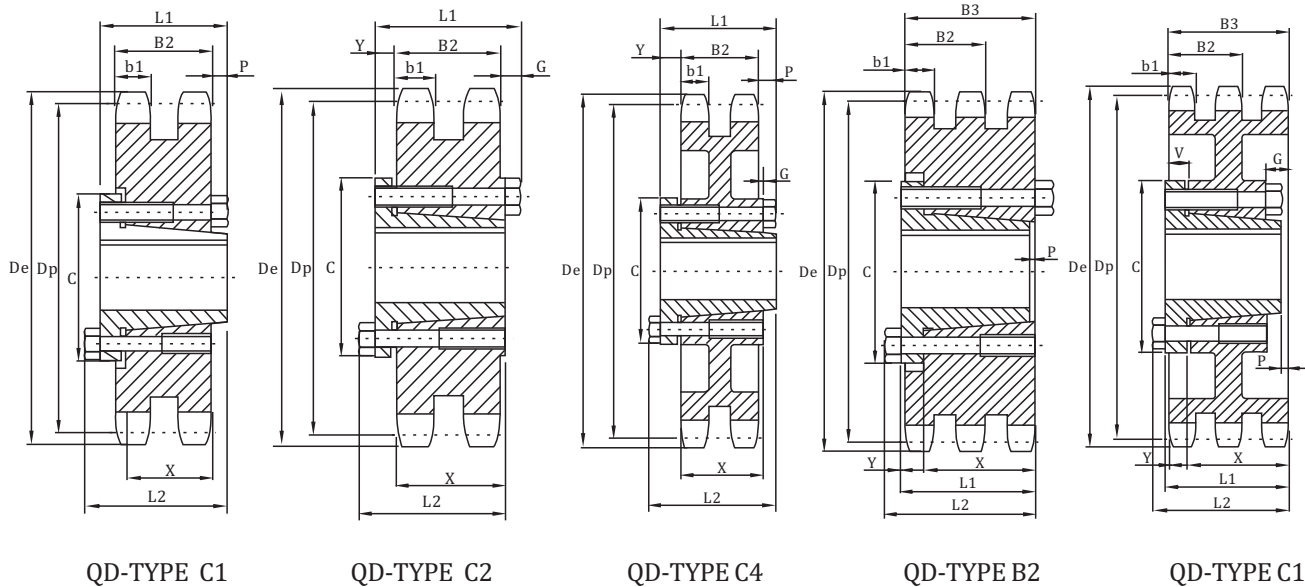


# Sprockets With QD Bushings American Standard Series

No.60-2

No.60-3

◇ Pitch 3/4"    ◇ Roller Φ 0.468"  
◇ Tooth width b1 0.444"    ◇ Tooth width B2 1.341"    ◇ Tooth width B3 2.238"



## Double-Type "QD"

No. Teeth	Number	Bushing	De	Dp	Type	Max. Bore	L1	L2	C	Y	P	G	X	b1	B2	Weight(Approx.)	
																With Hub	Rim Only
14	D60SH14H	SH	3.740	3.371	B★	1 5/8	1 31/32	1 31/32	2 1/16	1/2				.444	1.341	2.5	1.5
22	D60SDS22H	SDS	5.670	5.270	B★	2	1 17/32	1 15/32	3 3/16				3/4	.444	1.341	5.44	4.44
36	D60SF36	SF	9.020	8.605	C1	2 15/16	2	2 1/4	4 5/8	3/4			1 1/4	.444	1.341	19.26	16.26
42	D60E42	E	10.460	10.036	C2	3 1/2	2 5/8	2 15/16	6	7/8	13/32	9/32	1 5/8	.444	1.341	34.04	24.04
45	D60E45	E	11.180	10.752	C2	3 1/2	2 5/8	2 15/16	6	7/8	13/32	9/32	1 5/8	.444	1.341	38.26	28.36
52	D60E52	E	12.850	12.422	C2	3 1/2	2 5/8	2 15/16	6	7/8	13/32	9/32	1 5/8	.444	1.341	49.52	39.52
60	D60E60	E	14.760	14.331	C2	3 1/2	2 5/8	2 15/16	6	7/8	13/32	9/32	1 5/8	.444	1.341	63.39	53.74
68	D60E68	E	16.670	16.240	C4	3 1/2	2 5/8	2 15/16	6	7/8	13/32	9/32	1 5/8	.444	1.341	54.32	44.32
76	D60E76	E	18.580	18.149	C4	3 1/2	2 5/8	2 15/16	6	7/8	13/32	9/32	1 5/8	.444	1.341	61.48	51.48
95	D60E95	E	23.120	22.683	C4	3 1/2	2 5/8	2 15/16	6	7/8	13/32	9/32	1 5/8	.444	1.341	82.96	72.96

★ Not illustrated. Dimensions listed correspond approximately to illustrations shown.

## Triple-Type "QD"

No. Teeth	Number	Bushing	De	Dp	Type	Max. Bore	L1	L2	C	Y	P	G	V	X	b1	B3	Weight(Approx.)	
																	With Hub	Rim Only
36	E60E36	E	9.020	8.605	B2	3 1/2	2 5/8	2 15/16	6	17/64	1/8			1 5/8	.444	2.238	49	37
42	E60E42	E	10.460	10.036	B2	3 1/2	2 5/8	2 15/16	6	17/64	1/8			1 5/8	.444	2.238	62	50
52	E60E52	E	12.850	12.422	B2	3 1/2	2 5/8	2 15/16	6	17/64	1/8			1 5/8	.444	2.238	80	68
68	E60E68	E	16.670	16.240	C1	3 1/2	2 13/16	3 7/64	6	9/16	3/16	1/8	5/16	1 5/8	.444	2.238	83	71
76	E60E76	E	18.580	18.149	C1	3 1/2	2 13/16	3 7/64	6	9/16	3/16	1/8	5/16	1 5/8	.444	2.238	99	87
95	E60E95	E	23.120	22.683	C1	3 1/2	2 13/16	3 7/64	6	9/16	3/16	1/8	5/16	1 5/8	.444	2.238	129	117

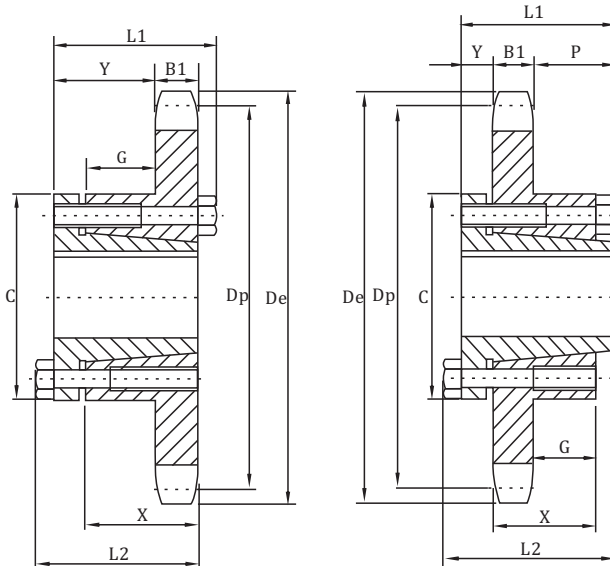
# Sprockets With QD Bushings American Standard Series

No.80

◇ Pitch 1" ◇ Roller Φ 0.625" ◇ Tooth width B1 0.575"

## Single-Type "QD" With Hardened Teeth

No. Teeth	Number
11	80SH11H
12	80SH12H
13	80SDS13H
14	80SDS14H
15	80SK15H
16	80SK16H
17	80SK17H
18	80SK18H
19	80SK19H
20	80SF20H
21	80SF21H
22	80SF22H
23	80SF23H
24	80SF24H
25	80SF25H
26	80SF26H
27	80SF27H
28	80SF28H
30	80SF30H



QD-TYPE B

QD-TYPE C



## Single-Type "QD"

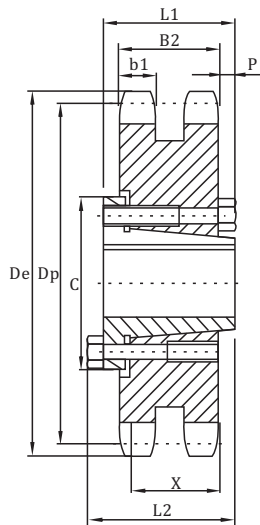
No. Teeth	Number	Bushing	De	Dp	Type	Max. Bore	L1	L2	C	Y	P	G	X	B1	Weight(Approx.)	
															With Hub	Rim Only
11	80SH11	SH	4.010	3.550	B	1 5/8	1 7/16	1 7/16	2 11/16	1 21/32		15/64	13/16	.575	2.0	1.0
12	80SH12	SH	4.330	3.864	B	1 5/8	1 7/16	1 7/16	2 11/16	1 21/32		15/64	13/16	.575	2.4	1.4
13	80SDS13	SDS	4.660	4.179	B	2	1 1/2	1 1/2	3 3/16	1 47/64		11/64	3/4	.575	2.5	1.5
14	80SDS14	SDS	4.980	4.494	B	2	1 1/2	1 1/2	3 3/16	1 47/64		11/64	3/4	.575	2.8	1.8
15	80SK15	SK	5.300	4.810	B	2 5/8	2 1/8	2 1/8	3 7/8	1 19/64		21/32	1 1/4	.575	4.5	2.5
16	80SK16	SK	5.630	5.126	B	2 5/8	2 1/8	2 1/8	3 7/8	1 19/64		21/32	1 1/4	.575	5.1	3.1
17	80SK17	SK	5.950	5.442	B	2 5/8	2 1/8	2 1/8	3 7/8	1 19/64		21/32	1 1/4	.575	5.5	3.5
18	80SK18	SK	6.270	5.759	B	2 5/8	2 1/8	2 1/8	3 7/8	1 19/64		21/32	1 1/4	.575	5.9	3.9
19	80SK19	SK	6.590	6.076	B	2 5/8	2 1/8	2 1/8	3 7/8	1 19/64		21/32	1 1/4	.575	6.4	4.4
20	80SF20	SF	6.910	6.392	B	2 15/16	2 1/4	2 1/4	4 5/8	1 27/64		21/32	1 1/4	.575	8.3	5.3
21	80SF21	SF	7.240	6.710	B	2 15/16	2 1/4	2 1/4	4 5/8	1 27/64		21/32	1 1/4	.575	8.7	5.7
22	80SF22	SF	7.560	7.027	B	2 15/16	2 1/4	2 1/4	4 5/8	1 27/64		21/32	1 1/4	.575	9.3	6.3
23	80SF23	SF	7.880	7.344	B	2 15/16	2 1/4	2 1/4	4 5/8	1 27/64		21/32	1 1/4	.575	9.8	6.8
24	80SF24	SF	8.200	7.661	B	2 15/16	2 1/4	2 1/4	4 5/8	1 27/64		21/32	1 1/4	.575	10.5	7.5
25	80SF25	SF	8.520	7.979	B	2 15/16	2 1/4	2 1/4	4 5/8	1 27/64		21/32	1 1/4	.575	11.0	8.0
26	80SF26	SF	8.840	8.296	B	2 15/16	2 1/4	2 1/4	4 5/8	1 27/64		21/32	1 1/4	.575	11.6	8.6
27	80SF27	SF	9.160	8.614	B	2 15/16	2 1/4	2 1/4	4 5/8	1 27/64		21/32	1 1/4	.575	12.4	9.4
28	80SF28	SF	9.480	8.931	B	2 15/16	2 1/4	2 1/4	4 5/8	1 27/64		21/32	1 1/4	.575	13.2	10.2
30	80SF30	SF	10.110	9.567	B	2 15/16	2 1/4	2 1/4	4 5/8	1 27/64		21/32	1 1/4	.575	14.3	11.3
32	80SF32	SF	10.750	10.202	B	2 15/16	2 1/4	2 1/4	4 5/8	1 27/64		21/32	1 1/4	.575	16.0	13.0
33	80SF33	SF	11.070	10.520	B	2 15/16	2 1/4	2 1/4	4 5/8	1 27/64		21/32	1 1/4	.575	16.5	13.5
34	80SF34	SF	11.390	10.838	B	2 15/16	2 1/4	2 1/4	4 5/8	1 27/64		21/32	1 1/4	.575	17.1	14.1
35	80SF35	SF	11.710	11.156	B	2 15/16	2 1/4	2 1/4	4 5/8	1 27/64		21/32	1 1/4	.575	18.5	15.5
36	80SF36	SF	12.030	11.474	B	2 15/16	2 1/4	2 1/4	4 5/8	1 27/64		21/32	1 1/4	.575	19.9	16.9
40	80SF40	SF	13.310	12.746	B	2 15/16	2 1/4	2 1/4	4 5/8	1 27/64		21/32	1 1/4	.575	23.6	20.6
42	80SF42	SF	13.940	13.382	B	2 15/16	2 1/4	2 1/4	4 5/8	1 27/64		21/32	1 1/4	.575	25.4	22.4
45	80SF45	SF	14.900	14.336	B	2 15/16	2 1/4	2 1/4	4 5/8	1 27/64		21/32	1 1/4	.575	28.1	25.1
48	80SF48	SF	15.860	15.290	B	2 15/16	2 1/4	2 1/4	4 5/8	1 27/64		21/32	1 1/4	.575	31.6	28.6
54	80SF54	SF	17.770	17.198	B	2 15/16	2 1/4	2 1/4	4 5/8	1 27/64		21/32	1 1/4	.575	39.8	36.8
60	80SF60	SF	19.680	19.107	B	2 15/16	2 1/4	2 1/4	4 5/8	1 27/64		21/32	1 1/4	.575	48.8	45.8
70	80E70	E	22.870	22.289	C	3 1/2	2 3/8	2 15/16	6	7/8	1 3/16	1 3/64	1 5/8	.575	65.6	55.6
72	80E72	E	23.500	22.926	C	3 1/2	2 3/8	2 15/16	6	7/8	1 3/16	1 3/64	1 5/8	.575	69.3	59.3
80	80E80	E	26.050	25.471	C	3 1/2	2 3/8	2 15/16	6	7/8	1 3/16	1 3/64	1 5/8	.575	79.2	69.2
84	80E84	E	27.330	26.744	C	3 1/2	2 3/8	2 15/16	6	7/8	1 3/16	1 3/64	1 5/8	.575	84.9	74.9
96	80E96	E	31.150	30.563	C	3 1/2	2 3/8	2 15/16	6	7/8	1 3/16	1 3/64	1 5/8	.575	108	97.5
112	80F112	F	36.240	35.655	C	3 15/16	3 7/8	4	6 5/8	1	2 1/16	1 59/64	2 1/2	.575	145	134

# Sprockets With QD Bushings American Standard Series

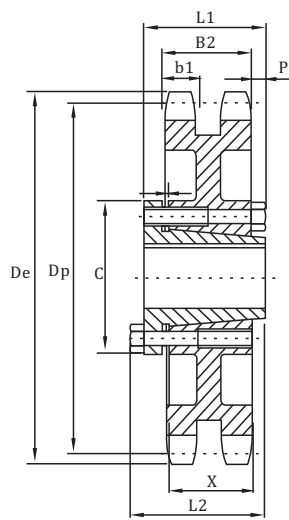
No.80-2

No.80-3

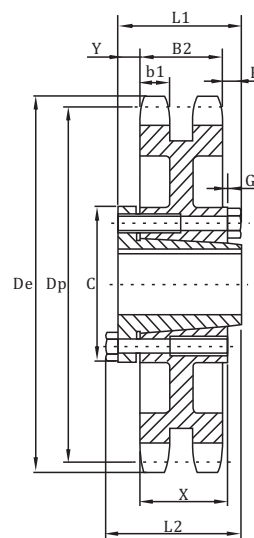
◇ Pitch 1"    ◇ Roller Φ 0.625"  
◇ Tooth width b1 0.557"    ◇ Tooth width B2 1.710"    ◇ Tooth width B3 2.863"



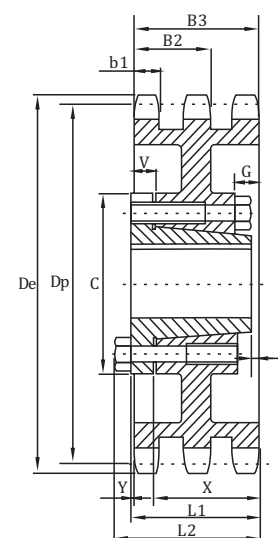
QD-TYPE C1



QD-TYPE C3



QD-TYPE C4



QD-TYPE B2

## Double-Type "QD"

No. Teeth	Number	Bushing	De	Dp	Type	Max. Bore	L1	L2	C	Y	P	G	V	X	b1	B2	Weight(Approx.)	
																	With Hub	Rim Only
36	D80E36	E	12.030	11.474	C1	3 1/2	2 5/8	2 15/16	6	51/64	1/8			1 5/8	.557	1.710	48.3	38.2
42	D80E42	E	13.940	13.382	C1	3 1/2	2 5/8	2 15/16	6	51/64	1/8			1 5/8	.557	1.710	65.3	55.3
45	D80E45	E	14.900	14.336	C1	3 1/2	2 5/8	2 15/16	6	51/64	1/8			1 5/8	.557	1.710	74.6	64.6
52	D80E52	E	17.130	16.562	C3	3 1/2	2 5/8	2 15/16	6	51/64	1/8		3/32	1 5/8	.557	1.710	68.2	58.2
60	D80E60	E	19.680	19.107	C3	3 1/2	2 5/8	2 15/16	6	51/64	1/8		3/32	1 5/8	.557	1.710	78.2	68.2
68	D80E68	E	22.230	21.653	C3	3 1/2	2 5/8	2 15/16	6	51/64	1/8		3/32	1 5/8	.557	1.710	84.2	74.2
76	D80E76	E	24.780	24.198	C3	3 1/2	2 5/8	2 15/16	6	51/64	1/8		3/32	1 5/8	.557	1.710	100	90.1
95	D80F95	F	30.830	30.245	C4	3 15/16	3 5/8	4	6 5/8	1	59/64	51/64		2 1/2	.557	1.710	152	140

## Triple-Type "QD"

No. Teeth	Number	Bushing	De	Dp	Type	Max. Bore	L1	L2	C	Y	P	G	V	X	b1	B3	Weight(Approx.)	
																	With Hub	Rim Only
36	E80E36	E	12.030	11.474	B2	3 1/2	3 7/64	3 27/64	6	1/4	31/64	1/8	5/8	1 5/8	.557	2.863	65.1	55.1
42	E80E42	E	13.940	13.382	B2	3 1/2	3 7/64	3 27/64	6	1/4	31/64	1/8	5/8	1 5/8	.557	2.863	81.9	71.9
45	E80E45	E	14.900	14.336	B2	3 1/2	3 7/64	3 27/64	6	1/4	31/64	1/8	5/8	1 5/8	.557	2.863	75.3	65.3
52	E80E52	E	17.130	16.562	B2	3 1/2	3 7/64	3 27/64	6	1/4	31/64	1/8	5/8	1 5/8	.557	2.863	90.0	80.0
60	E80F60	F	19.680	19.107	B2	3 15/16	3 43/64	4 3/64	6 5/8	13/16	3/64	1/8	3/16	2 1/2	.557	2.863	112	100
68	E80F68	F	22.230	21.653	B2	3 15/16	3 43/64	4 3/64	6 5/8	13/16	3/64	1/8	3/16	2 1/2	.557	2.863	132	120
76	E80F76	F	24.780	24.198	B2	3 15/16	3 43/64	4 3/64	6 5/8	13/16	3/64	1/8	3/16	2 1/2	.557	2.863	150	138
95	E80F95	F	30.830	30.245	B2	3 15/16	3 43/64	4 3/64	6 5/8	13/16	3/64	1/8	3/16	2 1/2	.557	2.863	208	196

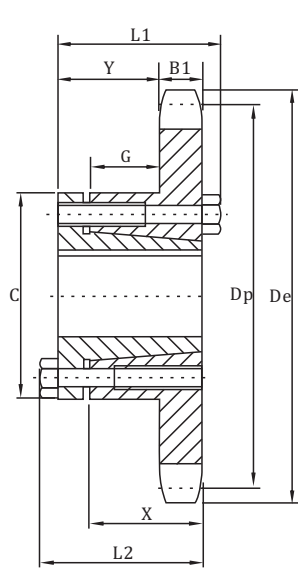
# Sprockets With QD Bushings American Standard Series

# No.100

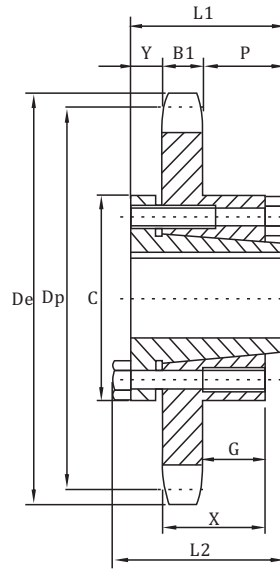
◇ Pitch 1 1/4"    ◇ Roller Φ 0.750"    ◇ Tooth width B1 0.692"

## Single-Type "QD" With Hardened Teeth

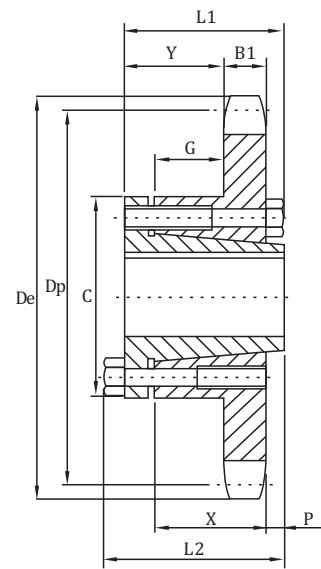
No. Teeth	Number
11	100SDS11H
12	100SDS12H
13	100SK13H
14	100SD14H
15	100SF15H
16	100SF16H
17	100SF17H
18	100E18H
19	100E19H
23	100E23H
24	100E24H
25	100E25H
26	100E26H
27	100E27H
28	100E28H
30	100E30H



QD-TYPE B



QD-TYPE C



QD-TYPE B1

## Single-Type "QD"

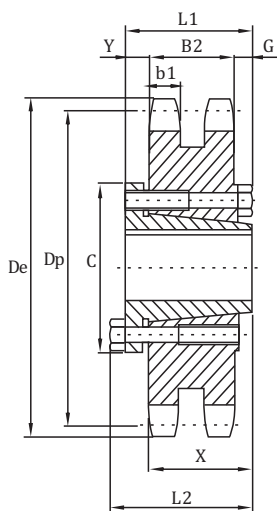
No. Teeth	Number	Bushing	De	Dp	Type	Max. Bore	L1	L2	C	Y	P	G	X	B1	Weight(Approx.)	
															With Hub	Rim Only
11	100SDS11	SDS	5.010	4.437	B	2	1 1/2	1 1/2	3 7/16	5/8		1/16	3/4	.692	3.0	2.0
12	100SDS12	SDS	5.420	4.830	B	2	1 1/2	1 1/2	3 7/16	5/8		1/16	3/4	.692	3.6	2.6
13	100SK13	SK	5.820	5.223	B	2 5/8	2 1/8	1 1/8	3 7/8	1 13/64		9/16	1 1/4	.692	5.3	3.3
14	100SK14	SK	6.230	5.617	B	2 5/8	2 1/8	1 1/8	3 7/8	1 13/64		9/16	1 1/4	.692	6.1	4.1
15	100SF15	SF	6.630	6.012	B	2 15/16	2 1/4	1 1/4	4 5/8	1 19/64		9/16	1 1/4	.692	7.8	4.8
16	100SF16	SF	7.030	6.407	B	2 15/16	2 1/4	1 1/4	4 5/8	1 19/64		9/16	1 1/4	.692	8.6	5.6
17	100SF17	SF	7.440	6.803	B	2 15/16	2 1/4	1 1/4	4 5/8	1 19/64		9/16	1 1/4	.692	9.5	6.5
18	100E18	E	7.840	7.198	B1	3 1/2	2 5/8	2 15/16	6	1 13/16	1/8	15/16	1 5/8	.692	19.0	9.0
19	100E19	E	8.240	7.595	B1	3 1/2	2 5/8	2 15/16	6	1 13/16	1/8	15/16	1 5/8	.692	20.2	10.2
20	100E20	E	8.640	7.991	B1	3 1/2	2 5/8	2 15/16	6	1 13/16	1/8	15/16	1 5/8	.692	21.6	11.6
21	100E21	E	9.040	8.387	B1	3 1/2	2 5/8	2 15/16	6	1 13/16	1/8	15/16	1 5/8	.692	22.5	12.5
22	100E22	E	9.440	8.783	B1	3 1/2	2 5/8	2 15/16	6	1 13/16	1/8	15/16	1 5/8	.692	23.5	13.5
23	100E23	E	9.840	9.180	B1	3 1/2	2 5/8	2 15/16	6	1 13/16	1/8	15/16	1 5/8	.692	24.6	14.6
24	100E24	E	10.250	9.577	B1	3 1/2	2 5/8	2 15/16	6	1 13/16	1/8	15/16	1 5/8	.692	25.7	15.7
25	100E25	E	10.650	9.973	B1	3 1/2	2 5/8	2 15/16	6	1 13/16	1/8	15/16	1 5/8	.692	26.8	16.8
26	100E26	E	11.050	10.370	B1	3 1/2	2 5/8	2 15/16	6	1 13/16	1/8	15/16	1 5/8	.692	28.1	18.1
27	100E27	E	11.440	10.767	B1	3 1/2	2 5/8	2 15/16	6	1 13/16	1/8	15/16	1 5/8	.692	29.2	19.2
28	100E28	E	11.840	11.164	B1	3 1/2	2 5/8	2 15/16	6	1 13/16	1/8	15/16	1 5/8	.692	30.7	20.7
30	100E30	E	12.640	11.958	B1	3 1/2	2 5/8	2 15/16	6	1 13/16	1/8	15/16	1 5/8	.692	33.2	23.2
32	100E32	E	13.440	12.753	B1	3 1/2	2 5/8	2 15/16	6	1 13/16	1/8	15/16	1 5/8	.692	35.4	25.4
35	100E35	E	14.640	13.945	B1	3 1/2	2 5/8	2 15/16	6	1 13/16	1/8	15/16	1 5/8	.692	40.5	30.5
36	100E36	E	15.040	14.342	B1	3 1/2	2 5/8	2 15/16	6	1 13/16	1/8	15/16	1 5/8	.692	42.5	32.3
40	100E40	E	16.630	15.931	B1	3 1/2	2 5/8	2 15/16	6	1 13/16	1/8	15/16	1 5/8	.692	49.1	39.1
42	100E42	E	17.430	16.727	B1	3 1/2	2 5/8	2 15/16	6	1 13/16	1/8	15/16	1 5/8	.692	53.4	43.4
45	100E45	E	18.630	17.920	B1	3 1/2	2 5/8	2 15/16	6	1 13/16	1/8	15/16	1 5/8	.692	58.9	48.9
48	100E48	E	19.820	19.112	B1	3 1/2	2 5/8	2 15/16	6	1 13/16	1/8	15/16	1 5/8	.692	64.0	54.0
54	100E54	E	22.210	21.498	C	3 1/2	2 5/8	2 15/16	6	7/8	1 1/16	15/16	1 5/8	.692	72.0	62.0
60	100E60	E	24.600	23.884	C	3 1/2	2 5/8	2 15/16	6	7/8	1 1/16	15/16	1 5/8	.692	84.0	74.0
70	100F70	F	28.580	27.862	C	3 15/16	3 5/8	4	6 5/8	1	1 15/16	1 13/16	2 1/2	.692	110.5	99.0
72	100F72	F	29.380	28.657	C	3 15/16	3 5/8	4	6 5/8	1	1 15/16	1 13/16	2 1/2	.692	117.5	106
80	100F80	F	32.570	31.839	C	3 15/16	3 5/8	4	6 5/8	1	1 15/16	1 13/16	2 1/2	.692	134.5	123
84	100F84	F	34.160	33.430	C	3 15/16	3 5/8	4	6 5/8	1	1 15/16	1 13/16	2 1/2	.692	151.5	140

# Sprockets With QD Bushings American Standard Series

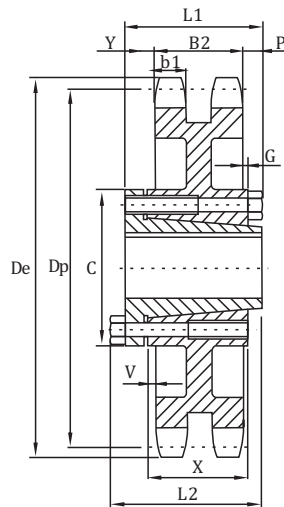
No.100-2

No.100-3

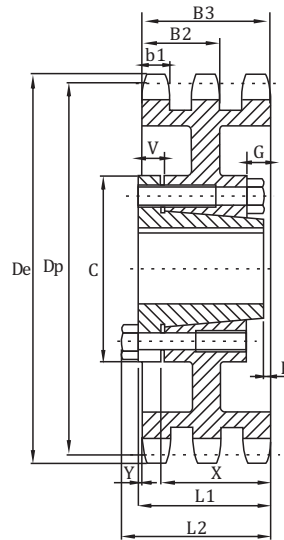
◇ Pitch 1 1/4"    ◇ Roller Φ 0.750"  
 ◇ Tooth width b1 0.669"    ◇ Tooth width B2 2.077"    ◇ Tooth width B3 3.485"



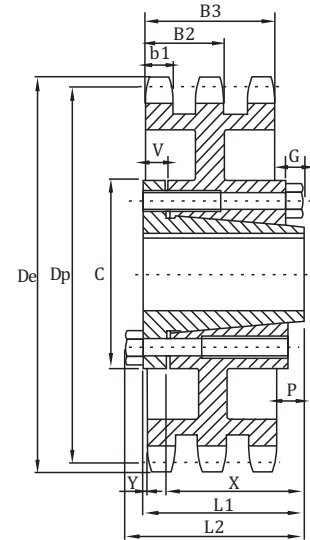
QD-TYPE C2



QD-TYPE C6



QD-TYPE B2



QD-TYPE C3

## Double-Type "QD"

No. Teeth	Number	Bushing	De	Dp	Type	Max. Bore	L1	L2	C	Y	P	G	V	X	b1	B2	Weight(Approx.)	
																	With Hub	Rim Only
35	D100F35	F	14.640	13.945	C2	3 <sup>15</sup> / <sub>16</sub>	3 <sup>7</sup> / <sub>8</sub>	4	6 <sup>5</sup> / <sub>8</sub>	1	<sup>35</sup> / <sub>64</sub>	<sup>27</sup> / <sub>64</sub>		2 <sup>1</sup> / <sub>2</sub>	.669	2.077	84.5	73
45	D100F45	F	18.630	17.920	C2	3 <sup>15</sup> / <sub>16</sub>	3 <sup>7</sup> / <sub>8</sub>	4	6 <sup>5</sup> / <sub>8</sub>	1	<sup>35</sup> / <sub>64</sub>	<sup>27</sup> / <sub>64</sub>		2 <sup>1</sup> / <sub>2</sub>	.669	2.077	92.5	81
60	D100J60	J	24.600	23.884	C6	4 <sup>7</sup> / <sub>16</sub>	4 <sup>1</sup> / <sub>2</sub>	5	7 <sup>1</sup> / <sub>4</sub>	1 <sup>7</sup> / <sub>32</sub>	1 <sup>13</sup> / <sub>64</sub>	1 <sup>3</sup> / <sub>32</sub>	<sup>1</sup> / <sub>32</sub>	3 <sup>3</sup> / <sub>16</sub>	.669	2.077	152	133
70	D100J70	J	28.580	27.862	C6	4 <sup>7</sup> / <sub>16</sub>	4 <sup>1</sup> / <sub>2</sub>	5	7 <sup>1</sup> / <sub>4</sub>	1 <sup>7</sup> / <sub>32</sub>	1 <sup>13</sup> / <sub>64</sub>	1 <sup>3</sup> / <sub>32</sub>	<sup>1</sup> / <sub>32</sub>	3 <sup>3</sup> / <sub>16</sub>	.669	2.077	180	161
80	D100J80	J	32.570	31.839	C6	4 <sup>7</sup> / <sub>16</sub>	4 <sup>1</sup> / <sub>2</sub>	5	7 <sup>1</sup> / <sub>4</sub>	1 <sup>7</sup> / <sub>32</sub>	1 <sup>13</sup> / <sub>64</sub>	1 <sup>3</sup> / <sub>32</sub>	<sup>1</sup> / <sub>32</sub>	3 <sup>3</sup> / <sub>16</sub>	.669	2.077	215	196

## Triple-Type "QD"

No. Teeth	Number	Bushing	De	Dp	Type	Max. Bore	L1	L2	C	Y	P	G	V	X	b1	B2	Weight(Approx.)	
																	With Hub	Rim Only
35	E100F35	F	14.640	13.945	B2	3 <sup>15</sup> / <sub>16</sub>	3 <sup>63</sup> / <sub>64</sub>	4 <sup>23</sup> / <sub>64</sub>	6 <sup>5</sup> / <sub>8</sub>	<sup>1</sup> / <sub>2</sub>	<sup>23</sup> / <sub>64</sub>	<sup>1</sup> / <sub>8</sub>	<sup>1</sup> / <sub>2</sub>	2 <sup>1</sup> / <sub>2</sub>	.669	3.485	112	100
45	E100F45	F	18.630	17.920	B2	3 <sup>15</sup> / <sub>16</sub>	3 <sup>63</sup> / <sub>64</sub>	4 <sup>23</sup> / <sub>64</sub>	6 <sup>5</sup> / <sub>8</sub>	<sup>1</sup> / <sub>2</sub>	<sup>23</sup> / <sub>64</sub>	<sup>1</sup> / <sub>8</sub>	<sup>1</sup> / <sub>2</sub>	2 <sup>1</sup> / <sub>2</sub>	.669	3.485	139	120
60	E100J60	J	24.600	23.884	C3	4 <sup>7</sup> / <sub>16</sub>	4 <sup>1</sup> / <sub>2</sub>	5	7 <sup>1</sup> / <sub>4</sub>	<sup>1</sup> / <sub>2</sub>	<sup>33</sup> / <sub>64</sub>	<sup>3</sup> / <sub>8</sub>	<sup>11</sup> / <sub>16</sub>	3 <sup>3</sup> / <sub>16</sub>	.669	3.485	197	178
70	E100J70	J	28.580	27.862	C3	4 <sup>7</sup> / <sub>16</sub>	4 <sup>1</sup> / <sub>2</sub>	5	7 <sup>1</sup> / <sub>4</sub>	<sup>1</sup> / <sub>2</sub>	<sup>33</sup> / <sub>64</sub>	<sup>3</sup> / <sub>8</sub>	<sup>11</sup> / <sub>16</sub>	3 <sup>3</sup> / <sub>16</sub>	.669	3.485	247	228
80	E100J80	J	32.570	31.839	C3	4 <sup>7</sup> / <sub>16</sub>	4 <sup>1</sup> / <sub>2</sub>	5	7 <sup>1</sup> / <sub>4</sub>	<sup>1</sup> / <sub>2</sub>	<sup>33</sup> / <sub>64</sub>	<sup>3</sup> / <sub>8</sub>	<sup>11</sup> / <sub>16</sub>	3 <sup>3</sup> / <sub>16</sub>	.669	3.485	287	268

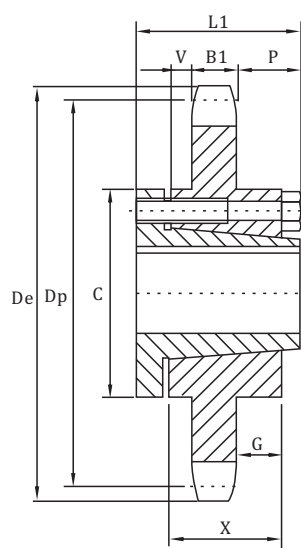
# Sprockets With QD Bushings American Standard Series

## No.120

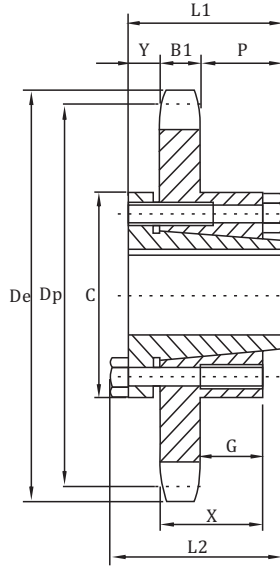
◇ Pitch 1 1/2"    ◇ Roller Φ 0.875"    ◇ Tooth width B1 0.924"

### Single-Type "QD" With Hardened Teeth

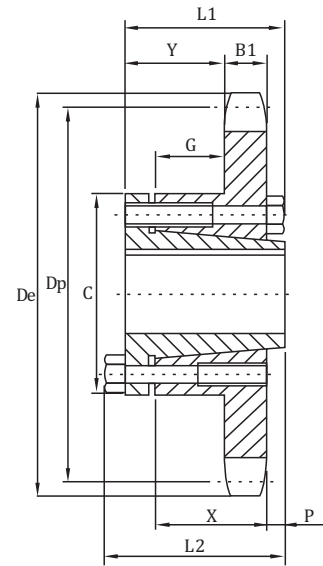
No. Teeth	Number
12	120SF12H
13	120SF13H
14	120SF14H
15	120SF15H
16	120E16H
17	120E17H
18	120E18H
19	120E19H
20	120E20H
21	120E21H
22	120E22H
23	120E23H
24	120E24H
25	120E25H
26	120E26H
28	120E28H
30	120E30H



QD-TYPE C1



QD-TYPE C



QD-TYPE B1

### Single-Type "QD"

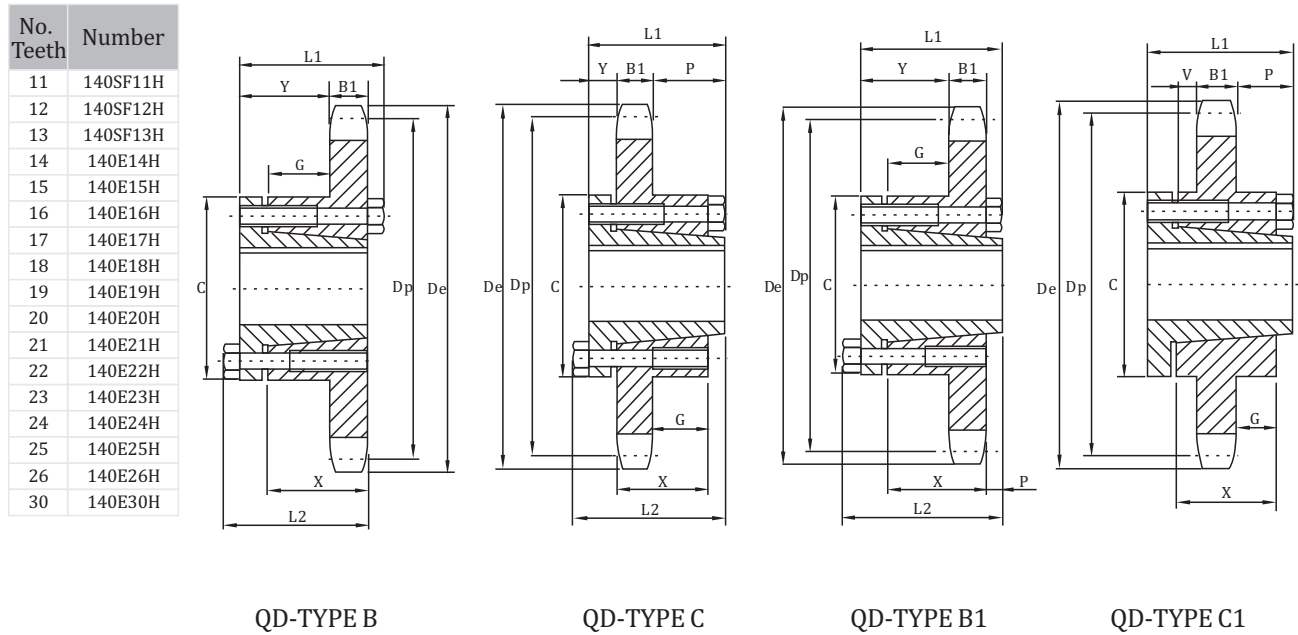
No. Teeth	Number	Bushing	De	Dp	Type	Max. Bore	L1	L2	C	Y	P	G	X	B1	Weight(Approx.)	
															With Hub	Rim Only
12	120SF12	SF	6.500	5.796	B	2 15/16	2 1/4	2 1/4	4 5/8	1 5/64		21/64	1 1/4	.924	7.7	4.7
13	120SF13	SF	6.990	6.268	B	2 15/16	2 1/4	2 1/4	4 5/8	1 5/64		21/64	1 1/4	.924	9.1	6.1
14	120SF14	SF	7.470	6.741	B	2 15/16	2 1/4	2 1/4	4 5/8	1 5/64		21/64	1 1/4	.924	10.4	7.4
15	120SF15	SF	7.960	7.215	B	2 15/16	2 1/4	2 1/4	4 5/8	1 5/64		21/64	1 1/4	.924	11.8	8.0
16	120E16	E	8.440	7.689	B1	3 1/2	2 5/8	2 15/16	6	1 9/16	1/8	45/64	1 5/8	.924	21.2	11.2
17	120E17	E	8.920	8.163	B1	3 1/2	2 5/8	2 15/16	6	1 9/16	1/8	45/64	1 5/8	.924	23.4	13.4
18	120E18	E	9.410	8.638	B1	3 1/2	2 5/8	2 15/16	6	1 9/16	1/8	45/64	1 5/8	.924	24.8	14.8
19	120E19	E	9.890	9.113	B1	3 1/2	2 5/8	2 15/16	6	1 9/16	1/8	45/64	1 5/8	.924	26.5	16.5
20	120E20	E	10.370	9.589	B1	3 1/2	2 5/8	2 15/16	6	1 9/16	1/8	45/64	1 5/8	.924	29.2	19.2
21	120E21	E	10.850	10.064	B1	3 1/2	2 5/8	2 15/16	6	1 9/16	1/8	45/64	1 5/8	.924	29.9	19.9
22	120E22	E	11.330	10.540	B1	3 1/2	2 5/8	2 15/16	6	1 9/16	1/8	45/64	1 5/8	.924	31.6	21.6
23	120E23	E	11.810	11.016	B1	3 1/2	2 5/8	2 15/16	6	1 9/16	1/8	45/64	1 5/8	.924	33.8	23.8
24	120E24	E	12.290	11.492	B1	3 1/2	2 5/8	2 15/16	6	1 9/16	1/8	45/64	1 5/8	.924	35.8	25.8
25	120E25	E	12.770	11.968	B1	3 1/2	2 5/8	2 15/16	6	1 9/16	1/8	45/64	1 5/8	.924	38.1	28.1
26	120E26	E	13.250	12.444	B1	3 1/2	2 5/8	2 15/16	6	1 9/16	1/8	45/64	1 5/8	.924	39.9	29.9
28	120E28	E	14.210	13.397	B1	3 1/2	2 5/8	2 15/16	6	1 9/16	1/8	45/64	1 5/8	.924	49.7	34.7
30	120E30	E	15.170	14.350	B1	3 1/2	2 5/8	2 15/16	6	1 9/16	1/8	45/64	1 5/8	.924	49.4	39.4
32	120F32	F	16.130	15.303	C	3 15/16	3 5/8	4	6 5/8	1	1 11/16	1 37/64	2 1/2	.924	62.0	50.5
35	120F35	F	17.570	16.734	C	3 15/16	3 5/8	4	6 5/8	1	1 11/16	1 37/64	2 1/2	.924	71.0	59.5
36	120F36	F	18.050	17.211	C	3 15/16	3 5/8	4	6 5/8	1	1 11/16	1 37/64	2 1/2	.924	74.9	63.4
40	120F40	F	19.960	19.118	C	3 15/16	3 5/8	4	6 5/8	1	1 11/16	1 37/64	2 1/2	.924	88.5	77.0
42	120F42	F	20.920	20.072	C	3 15/16	3 5/8	4	6 5/8	1	1 11/16	1 37/64	2 1/2	.924	94.5	83.0
45	120F45	F	22.350	21.503	C	3 15/16	3 5/8	4	6 5/8	1	1 11/16	1 37/64	2 1/2	.924	95.5	84.0
48	120F48	F	23.790	22.935	C	3 15/16	3 5/8	4	6 5/8	1	1 11/16	1 37/64	2 1/2	.924	103.5	92.0
54	120F54	F	26.650	25.798	C	3 15/16	3 5/8	4	6 5/8	1	1 11/16	1 37/64	2 1/2	.924	125	114
60	120J60	J	29.520	28.661	C	4 7/16	4 1/2	5	7 1/4	1 3/16	2 5/16	2 17/64	3 3/16	.924	159	140
70	120J70	J	34.300	33.434	C	4 7/16	4 1/2	5	7 1/4	1 3/16	2 5/16	2 17/64	3 3/16	.924	196	177
80	120J80	J	39.080	38.207	C	4 7/16	4 1/2	5	7 1/4	1 3/16	2 5/16	2 17/64	3 3/16	.924	241	222

# Sprockets With QD Bushings American Standard Series

No.140

◇Pitch 1 3/4" ◇Roller Φ 1.000" ◇Tooth width b1 0.924"

## Single-Type "QD" With Hardened Teeth



## Single-Taper Bushed

No. Teeth	Number	Bushing	De	Dp	Type	Max. Bore	L1	L2	C	Y	P	G	V	X	B1	Weight(Approx.)	
																With Hub	Rim Only
11	140SF11	SF	7.010	6.212	B	2 15/16	2 1/4	2 1/4	4 5/8	1 5/64		2 1/64		1 1/4	.924	8.6	5.6
12	140SF12	SF	7.580	6.762	B	2 15/16	2 1/4	2 1/4	4 5/8	1 5/64		2 1/64		1 1/4	.924	10.4	7.4
13	140SF13	SF	8.150	7.313	B	2 15/16	2 1/4	2 1/4	4 5/8	1 5/64		2 1/64		1 1/4	.924	11.9	8.9
14	140E14	E	8.720	7.864	B1	3 1/2	2 5/8	2 15/16	6	1 9/16	1/8	4 5/64		1 5/8	.924	21.6	11.6
15	140E15	E	9.280	8.417	B1	3 1/2	2 5/8	2 15/16	6	1 9/16	1/8	4 5/64		1 5/8	.924	24.2	14.2
16	140E16	E	9.850	8.970	B1	3 1/2	2 5/8	2 15/16	6	1 9/16	1/8	4 5/64		1 5/8	.924	25.9	15.9
17	140E17	E	10.410	9.524	B1	3 1/2	2 5/8	2 15/16	6	1 9/16	1/8	4 5/64		1 5/8	.924	28.0	18.0
18	140E18	E	10.980	10.078	B1	3 1/2	2 5/8	2 15/16	6	1 9/16	1/8	4 5/64		1 5/8	.924	29.6	19.6
19	140E19	E	11.540	10.632	B1	3 1/2	2 5/8	2 15/16	6	1 9/16	1/8	4 5/64		1 5/8	.924	32.0	22.0
20	140E20	E	12.100	11.187	B1	3 1/2	2 5/8	2 15/16	6	1 9/16	1/8	4 5/64		1 5/8	.924	34.6	24.6
21	140E21	E	12.660	11.742	B1	3 1/2	2 5/8	2 15/16	6	1 9/16	1/8	4 5/64		1 5/8	.924	37.6	27.6
22	140E22	E	13.220	12.297	B1	3 1/2	2 5/8	2 15/16	6	1 9/16	1/8	4 5/64		1 5/8	.924	39.5	29.5
23	140F23	F	13.780	12.852	B1	3 15/16	3 5/8	4	6 5/8	2 9/16	1/8	1 37/64		2 1/2	.924	48.0	36.4
24	140F24	F	14.340	13.407	B1	3 15/16	3 5/8	4	6 5/8	2 9/16	1/8	1 37/64		2 1/2	.924	51.6	40.1
25	140F25	F	14.900	13.963	B1	3 15/16	3 5/8	4	6 5/8	2 9/16	1/8	1 37/64		2 1/2	.924	53.8	42.3
26	140F26	F	15.460	14.518	B1	3 15/16	3 5/8	4	6 5/8	2 9/16	1/8	1 37/64		2 1/2	.924	58.0	46.5
30	140F30	F	17.700	16.742	B1	3 15/16	3 5/8	4	6 5/8	2 9/16	1 11/16	1 37/64		2 1/2	.924	72.0	60.4
35	140F35	F	20.490	19.523	C	3 15/16	3 5/8	4	6 5/8	1	1 11/16	1 37/64		2 1/2	.924	89.5	78.0
36	140F36	F	21.050	20.079	C	3 15/16	3 5/8	4	6 5/8	1	2 3/8	1 37/64		2 1/2	.924	95.5	84.0
40	140J40	J	23.290	22.305	C	4 7/16	4 1/2	5	7 1/4	1 3/16	2 3/8	2 17/64		3 3/16	.924	117	98.0
45	140J45	J	26.080	25.087	C	4 7/16	4 1/2	5	7 1/4	1 3/16	2 3/8	2 17/64		3 3/16	.924	139	120
48	140J48	J	27.750	26.757	C	4 7/16	4 1/2	5	7 1/4	1 3/16	2 3/8	2 17/64		3 3/16	.924	148	129
54	140J54	J	31.100	30.097	C	4 7/16	4 1/2	5	7 1/4	1 3/16	2 3/8	2 17/64		3 3/16	.924	168	149
60	140J60	J	34.440	33.438	C	4 7/16	4 1/2	5	7 1/4	1 3/16	2 3/8	2 17/64		3 3/16	.924	205	186
70	140M70	M	40.020	39.006	C1	5 1/2	6 3/4	6 3/4	9	2 29/32	2 17/32	2 17/32	1 13/32	5 3/16	.924	301	264
80	140M80	M	45.590	44.575	C1	5 1/2	6 3/4	6 3/4	9	2 29/32	2 29/32	2 17/32	1 13/32	5 3/16	.924	385	348

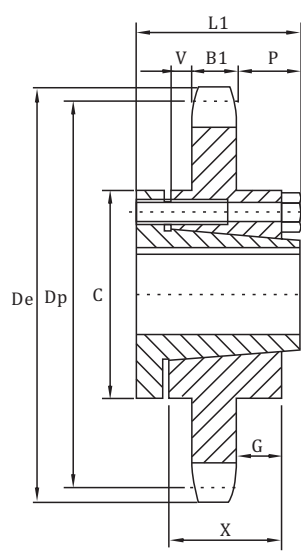
# Sprockets With QD Bushings American Standard Series

## No.160

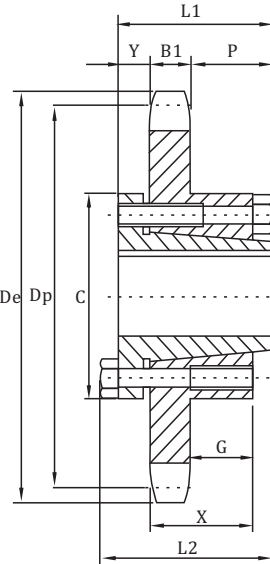
◇ Pitch 2" ◇ Roller Φ 1.125" ◇ Tooth width B1 1.156"

### Single-Type "QD" With Hardened Teeth

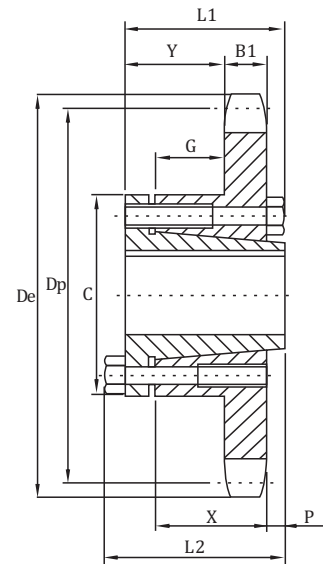
No. Teeth	Number
12	160E12H
13	160E13H
14	160E14H
15	160E15H
16	160E16H
17	160E17H
18	160E18H
19	160E19H
20	160E20H
21	160E21H
22	160E22H
23	160E23H
24	160E24H
25	160E25H
26	160E26H
28	160E28H
30	160E30H



QD-TYPE C1



QD-TYPE C



QD-TYPE B1

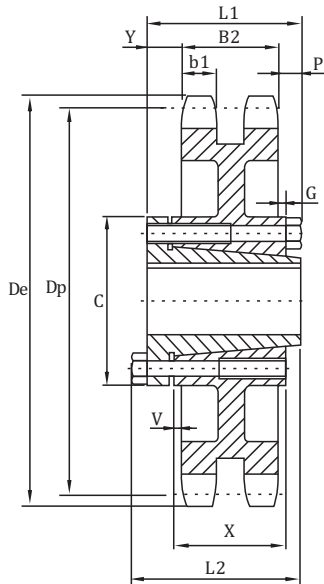
### Single-Type "QD"

No. Teeth	Number	Bushing	De	Dp	Type	Max. Bore	L1	L2	C	Y	P	G	V	X	B1	Weight(Approx.)	
																With Hub	Rim Only
12	160E12	E	8.660	7.727	B1	3 1/2	2 3/8	2 15/16	6	1 15/16	1/8	15/32		1 5/8	1.156	21.0	11
13	160E13	E	9.310	8.357	B1	3 1/2	2 3/8	2 15/16	6	1 15/16	1/8	15/32		1 5/8	1.156	24.0	14
14	160E14	E	9.960	8.988	B1	3 1/2	2 3/8	2 15/16	6	1 15/16	1/8	15/32		1 5/8	1.156	26.0	16
15	160F15	F	10.610	9.620	B1	3 15/16	3 3/8	4	6 3/8	2 5/16	1/8	1 11/32		2 1/2	1.156	35.5	24
16	160F16	F	11.260	10.252	B1	3 15/16	3 3/8	4	6 3/8	2 5/16	1/8	1 11/32		2 1/2	1.156	38.5	27
17	160F17	F	11.900	10.885	B1	3 15/16	3 3/8	4	6 3/8	2 5/16	1/8	1 11/32		2 1/2	1.156	42.5	31
18	160F18	F	12.540	11.518	B1	3 15/16	3 3/8	4	6 3/8	2 5/16	1/8	1 11/32		2 1/2	1.156	46.5	35
19	160F19	F	13.190	12.151	B1	3 15/16	3 3/8	4	6 3/8	2 5/16	1/8	1 11/32		2 1/2	1.156	49.5	38
20	160F20	F	13.830	12.785	B1	3 15/16	3 3/8	4	6 3/8	2 5/16	1/8	1 11/32		2 1/2	1.156	53.5	42
21	160F21	F	14.740	13.419	B1	3 15/16	3 3/8	4	6 3/8	2 5/16	1/8	1 11/32		2 1/2	1.156	56.5	45
22	160F22	F	15.110	14.053	B1	3 15/16	3 3/8	4	6 3/8	2 5/16	1/8	1 11/32		2 1/2	1.156	62.5	51
23	160F23	F	15.750	14.688	B1	3 15/16	3 3/8	4	6 3/8	2 5/16	1/8	1 11/32		2 1/2	1.156	66.5	55
24	160F24	F	16.390	15.323	B1	3 15/16	3 3/8	4	6 3/8	2 5/16	1/8	1 11/32		2 1/2	1.156	70.5	59
25	160F25	F	17.030	15.958	B1	3 15/16	3 3/8	4	6 3/8	2 5/16	1/8	1 11/32		2 1/2	1.156	75.5	64
26	160J26	J	17.670	16.593	C	4 7/16	4 1/2	5	7 1/4	1 3/16	2 1/8	2 1/32		3 3/16	1.156	92.5	74
28	160J28	J	18.950	17.863	C	4 7/16	4 1/2	5	7 1/4	1 3/16	2 1/8	2 1/32		3 3/16	1.156	103	84
30	160J30	J	20.230	19.134	C	4 7/16	4 1/2	5	7 1/4	1 3/16	2 1/8	2 1/32		3 3/16	1.156	115	96
35	160J35	J	23.420	22.312	C	4 7/16	4 1/2	5	7 1/4	1 3/16	2 1/8	2 1/32		3 3/16	1.156	135	116
40	160M40	M	26.610	25.491	C1	5 1/2	6 3/4	6 3/4	9	2 11/16	2 11/16	2 13/32	1 19/32	5 3/16	1.156	211	174
45	160M45	M	29.800	28.671	C1	5 1/2	6 3/4	6 3/4	9	2 11/16	2 11/16	2 13/32	1 19/32	5 3/16	1.156	245	208
54	160M54	M	35.540	34.397	C1	5 1/2	6 3/4	6 3/4	9	2 11/16	2 11/16	2 13/32	1 19/32	5 3/16	1.156	299	262
60	160M60	M	39.360	38.215	C1	5 1/2	6 3/4	6 3/4	9	2 11/16	2 11/16	2 13/32	1 19/32	5 3/16	1.156	347	310
70	160M70	M	45.730	44.578	C1	5 1/2	6 3/4	6 3/4	9	2 11/16	2 11/16	2 13/32	1 19/32	5 3/16	1.156	468	431
80	160M80	M	52.100	50.943	C1	5 1/2	6 3/4	6 3/4	9	2 11/16	2 11/16	2 13/32	1 19/32	5 3/16	1.156	567	530

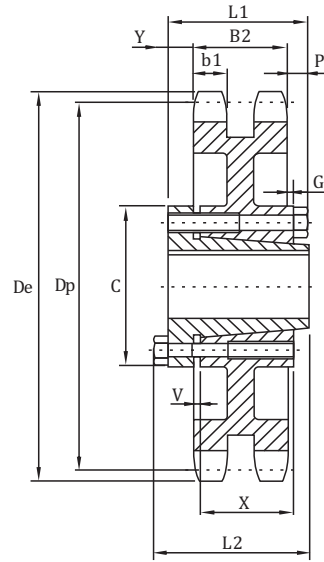


# Sprockets With QD Bushings American Standard Series

No.120-2  
No.140-2  
No.160-2



QD-TYPE C6



QD-TYPE C5

◇ Pitch 1 1/2" ◇ Roller Φ 0.875"  
◇ Tooth width b1 0.894" ◇ Tooth width B2 2.683"

## Double-Type "QD"

No.120-2

No. Teeth	Number	Bushing	De	Dp	Type	Max. Bore	L1	L2	C	Y	P	G	V	X	b1	B2	Weight(Approx.)	
																	With Hub	Rim Only
30	D120J30	J	15.170	14.350	C5	4 7/16	4 1/2	5	7 1/4	1 1/32	2 5/32	2 1/32	5/32	3 3/16	.894	2.683	97.8	78.0
35	D120J35	J	17.570	16.734	C5	4 7/16	4 1/2	5	7 1/4	1 1/32	2 5/32	2 1/32	5/32	3 3/16	.894	2.683	112	93.0
45	D120J45	J	22.350	21.502	C5	4 7/16	4 1/2	5	7 1/4	1 1/32	2 5/32	2 1/32	5/32	3 3/16	.894	2.683	157	138
60	D120M60	M	29.520	28.661	C6	5 1/2	6 3/4	6 3/4	9	2 9/32	1 25/32	1 27/32	27/32	5 3/16	.894	2.683	271	234

◇ Pitch 1 3/4" ◇ Roller Φ 1.000"  
◇ Tooth width b1 0.894" ◇ Tooth width B2 2.818"

## Double-Type "QD"

No.140-2

No. Teeth	Number	Bushing	De	Dp	Type	Max. Bore	L1	L2	C	Y	P	G	V	X	b1	B2	Weight(Approx.)	
																	With Hub	Rim Only
30	D140J30	J	20.490	19.523	C5	4 7/16	4 1/2	5	7 1/4	31/32	2 7/32	1 9/32	7/32	3 3/16	.894	2.818	137	128
45	D140J45	J	26.080	25.087	C5	4 7/16	4 1/2	5	7 1/4	31/32	2 7/32	1 9/32	7/32	3 3/16	.894	2.818	195	176
60	D140M60	M	34.440	33.438	C6	5 1/2	6 3/4	6 3/4	9	2 7/32	1 27/32	1 19/32	25/32	5 3/16	.894	2.818	339	302

◇ Pitch 2" ◇ Roller Φ 1.125"  
◇ Tooth width b1 1.119" ◇ Tooth width B2 3.424"

## Double-Type "QD"

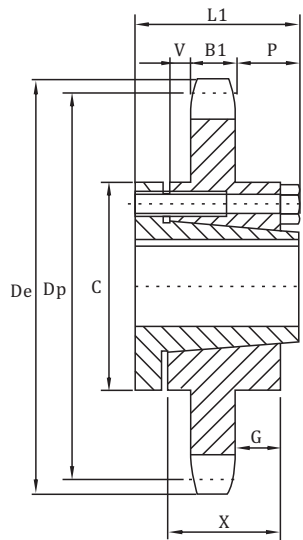
No.160-2

No. Teeth	Number	Bushing	De	Dp	Type	Max. Bore	L1	L2	C	Y	P	G	V	X	b1	B2	Weight(Approx.)	
																	With Hub	Rim Only
30	D160M30	M	23.420	22.312	C6	5 1/2	6 3/4	6 3/4	9	2 3/64	1 9/32	1 1/32	39/64	5 3/16	1.119	3.424	259	222
45	D160N45	N	29.800	28.671	C6	6	8 1/8	8 1/8	10	2 11/32	2 23/64	2 7/32	21/32	6 1/4	1.119	3.424	377	340
60	D160N60	N	39.360	38.215	C6	6	8 1/8	8 1/8	10	2 11/32	2 23/64	2 7/32	21/32	6 1/4	1.119	3.424	509	472

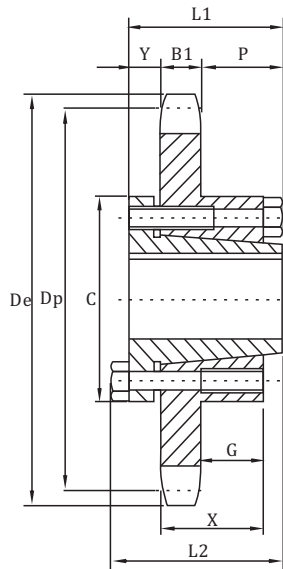
# Sprockets With QD Bushings American Standard Series

## No.200

◇ Pitch 2 1/2"      ◇ Roller Φ 1.562"      ◇ Tooth width B1 1.389"



QD-TYPE C1



QD-TYPE C



### Single-Type "QD"

No. Teeth	Number	Bushing	De	Dp	Type	Max. Bore	L1	L2	C	Y	P	G	V	X	B1	Weight(Approx.)	
																With Hub	Rim Only
12	200F12	F	10.830	9.660	C	3 15/16	3 5/8	4	6 5/8	1	1 5/16	1 1/8		2 1/2	1.389	25.5	24
13	200J13	J	11.640	10.447	C	4 7/16	4 1/2	5	7 1/4	1 3/16	2	1 13/16		3 3/16	1.389	50.5	32
14	200J14	J	12.460	11.235	C	4 7/16	4 1/2	5	7 1/4	1 3/16	2	1 13/16		3 3/16	1.389	57.5	39
15	200J15	J	13.260	12.025	C	4 7/16	4 1/2	5	7 1/4	1 3/16	2	1 13/16		3 3/16	1.389	62.5	44
16	200J16	J	14.070	12.815	C	4 7/16	4 1/2	5	7 1/4	1 3/16	2	1 13/16		3 3/16	1.389	68.5	50
17	200M17	M	14.870	13.605	C1	5 1/2	6 3/4	6 3/4	9	2 23/32	2 23/32	2 5/16	1 1/2	5 3/16	1.389	113	76
18	200M18	M	15.680	14.397	C1	5 1/2	6 3/4	6 3/4	9	2 23/32	2 23/32	2 5/16	1 1/2	5 3/16	1.389	119	82
19	200M19	M	16.480	15.910	C1	5 1/2	6 3/4	6 3/4	9	2 23/32	2 23/32	2 5/16	1 1/2	5 3/16	1.389	125	88
20	200M20	M	17.290	15.982	C1	5 1/2	6 3/4	6 3/4	9	2 23/32	2 23/32	2 5/16	1 1/2	5 3/16	1.389	134	97
21	200M21	M	18.090	16.775	C1	5 1/2	6 3/4	6 3/4	9	2 23/32	2 23/32	2 5/16	1 1/2	5 3/16	1.389	140	103
22	200M22	M	18.890	17.567	C1	5 1/2	6 3/4	6 3/4	9	2 23/32	2 23/32	2 5/16	1 1/2	5 3/16	1.389	149	112
23	200M23	M	19.690	18.360	C1	5 1/2	6 3/4	6 3/4	9	2 23/32	2 23/32	2 5/16	1 1/2	5 3/16	1.389	157	120
24	200M24	M	20.490	19.152	C1	5 1/2	6 3/4	6 3/4	9	2 23/32	2 23/32	2 5/16	1 1/2	5 3/16	1.389	168	131
25	200M25	M	21.290	19.947	C1	5 1/2	6 3/4	6 3/4	9	2 23/32	2 23/32	2 5/16	1 1/2	5 3/16	1.389	175	138
26	200M26	M	22.090	20.740	C1	5 1/2	6 3/4	6 3/4	9	2 23/32	2 23/32	2 5/16	1 1/2	5 3/16	1.389	185	148
28	200M28	M	23.690	22.330	C1	5 1/2	6 3/4	6 3/4	9	2 23/32	2 23/32	2 5/16	1 1/2	5 3/16	1.389	205	168
30	200M30	M	25.290	23.917	C1	5 1/2	6 3/4	6 3/4	9	2 23/32	2 23/32	2 5/16	1 1/2	5 3/16	1.389	227	190
32	200M32	M	26.880	25.505	C1	5 1/2	6 3/4	6 3/4	9	2 23/32	2 23/32	2 5/16	1 1/2	5 3/16	1.389	251	214
35	200M35	M	29.280	27.890	C1	5 1/2	6 3/4	6 3/4	9	2 23/32	2 23/32	2 5/16	1 1/2	5 3/16	1.389	265	228
40	200M40	M	33.270	31.865	C1	5 1/2	6 3/4	6 3/4	9	2 23/32	2 23/32	2 5/16	1 1/2	5 3/16	1.389	315	278
45	200N45	N	37.250	35.840	C1	5 7/8	8 7/8	8 7/8	10	3 13/32	3 13/32	3 3/16	1 1/2	6 1/4	1.389	405	348
54	200N54	N	44.420	42.995	C1	5 7/8	8 7/8	8 7/8	10	3 13/32	3 13/32	3 3/16	1 1/2	6 1/4	1.389	535	478
60	200N60	N	49.200	47.767	C1	5 7/8	8 7/8	8 7/8	10	3 13/32	3 13/32	3 3/16	1 1/2	6 1/4	1.389	665	608