

# Sprockets With Split Taper Bushings

## American Standard Series

No.35  
No.41

◇Pitch  $3/8''$       ◇Roller  $\Phi$   $0.200''$       ◇Tooth width B1  $0.168''$

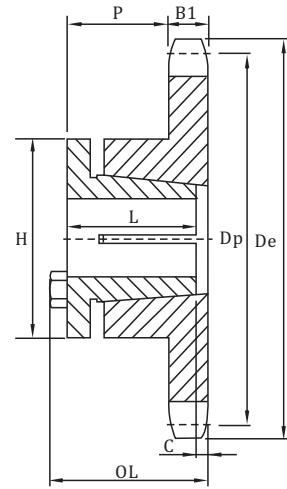
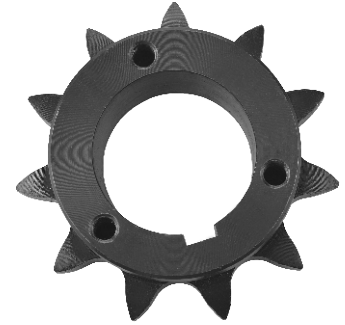
### Single-Split Taper Bushed

Number	Bushing	Bore Range	De	Dp	No. Teeth	Type	B1	OL	L	P	C	H	Wt. Less (Bushing)
35G15	G	$3/8 - 1''$	1.99"	1.804"	15	3	.168"	$1\frac{1}{32}''$	1"	1"	$5/32''$	2"	.3
35G16	G	$3/8 - 1''$	2.10	1.922	16	3	.168	$1\frac{1}{32}''$	1	1	$5/32''$	2	.3
35G17	G	$3/8 - 1$	2.23	2.041	17	3	.168	$1\frac{1}{32}''$	1	1	$5/32''$	2	.3
35G18	G	$3/8 - 1$	2.35	2.159	18	3	.168	$1\frac{1}{32}''$	1	1	$5/32''$	2	.3
35G19	G	$3/8 - 1$	2.47	2.278	19	3	.168	$1\frac{1}{4}''$	1	$29/32''$	$1/16''$	2	.3
35H19	H	$3/8 - 1\frac{1}{2}$	2.47	2.278	19	3	.168	$1\frac{1}{2}''$	$1\frac{1}{4}''$	1	$1/16''$	$2\frac{1}{2}''$	.5
35H20	H	$3/8 - 1\frac{1}{2}$	2.59	2.397	20	3	.168	$1\frac{1}{2}''$	$1\frac{1}{4}''$	$1\frac{5}{32}''$	$1/16''$	$2\frac{1}{2}''$	.5
35H21	H	$3/8 - 1\frac{1}{2}$	2.70	2.516	21	3	.168	$1\frac{1}{2}''$	$1\frac{1}{4}''$	$1\frac{5}{32}''$	$1/16''$	$2\frac{1}{2}''$	.6
35H22	H	$3/8 - 1\frac{1}{2}$	2.83	2.635	22	3	.168	$1\frac{1}{2}''$	$1\frac{1}{4}''$	$1\frac{5}{32}''$	$1/16''$	$2\frac{1}{2}''$	.7
35H23	H	$3/8 - 1\frac{1}{2}$	2.95	2.754	23	3	.168	$1\frac{1}{2}''$	$1\frac{1}{4}''$	$1\frac{5}{32}''$	$1/16''$	$2\frac{1}{2}''$	.7
35H24	H	$3/8 - 1\frac{1}{2}$	3.05	2.873	24	3	.168	$1\frac{1}{2}''$	$1\frac{1}{4}''$	$1\frac{5}{32}''$	$1/16''$	$2\frac{1}{2}''$	.8
35H25	H	$3/8 - 1\frac{1}{2}$	3.19	2.992	25	3	.168	$1\frac{1}{2}''$	$1\frac{1}{4}''$	$1\frac{5}{32}''$	$1/16''$	$2\frac{1}{2}''$	.8
35H26	H	$3/8 - 1\frac{1}{2}$	3.31	3.111	26	3	.168	$1\frac{1}{2}''$	$1\frac{1}{4}''$	$1\frac{5}{32}''$	$1/16''$	$2\frac{1}{2}''$	.8
35H28	H	$3/8 - 1\frac{1}{2}$	3.55	3.349	28	3	.168	$1\frac{1}{2}''$	$1\frac{1}{4}''$	$1\frac{5}{32}''$	$1/16''$	$2\frac{1}{2}''$	.9
35H30	H	$3/8 - 1\frac{1}{2}$	3.79	3.588	30	3	.168	$1\frac{1}{2}''$	$1\frac{1}{4}''$	$1\frac{5}{32}''$	$1/16''$	$2\frac{1}{2}''$	.9
35H32	H	$3/8 - 1\frac{1}{2}$	4.03	3.826	32	3	.168	$1\frac{1}{2}''$	$1\frac{1}{4}''$	$1\frac{5}{32}''$	$1/16''$	$2\frac{1}{2}''$	.9
35H35	H	$3/8 - 1\frac{1}{2}$	4.39	4.183	35	3	.168	$1\frac{1}{2}''$	$1\frac{1}{4}''$	$1\frac{5}{32}''$	$1/16''$	$2\frac{1}{2}''$	1.0
35H36	H	$3/8 - 1\frac{1}{2}$	4.51	4.303	36	3	.168	$1\frac{1}{2}''$	$1\frac{1}{4}''$	$1\frac{5}{32}''$	$1/16''$	$2\frac{1}{2}''$	1.0
35H40	H	$3/8 - 1\frac{1}{2}$	4.99	4.780	40	3	.168	$1\frac{1}{2}''$	$1\frac{1}{4}''$	$1\frac{5}{32}''$	$1/16''$	$2\frac{1}{2}''$	1.2
35H42	H	$3/8 - 1\frac{1}{2}$	5.23	5.018	42	3	.168	$1\frac{1}{2}''$	$1\frac{1}{4}''$	$1\frac{5}{32}''$	$1/16''$	$2\frac{1}{2}''$	1.2
35H45	H	$3/8 - 1\frac{1}{2}$	5.59	5.379	45	3	.168	$1\frac{1}{2}''$	$1\frac{1}{4}''$	$1\frac{5}{32}''$	$1/16''$	$2\frac{1}{2}''$	1.4
35H48	H	$3/8 - 1\frac{1}{2}$	5.95	5.734	48	3	.168	$1\frac{1}{2}''$	$1\frac{1}{4}''$	$1\frac{5}{32}''$	$1/16''$	$2\frac{1}{2}''$	1.5
35H54	H	$3/8 - 1\frac{1}{2}$	6.66	6.449	54	3	.168	$1\frac{1}{2}''$	$1\frac{1}{4}''$	$1\frac{5}{32}''$	$1/16''$	$2\frac{1}{2}''$	1.8
35H60	H	$3/8 - 1\frac{1}{2}$	7.38	7.165	60	3	.168	$1\frac{1}{2}''$	$1\frac{1}{4}''$	$1\frac{5}{32}''$	$1/16''$	$2\frac{1}{2}''$	2.3
35H70	H	$3/8 - 1\frac{1}{2}$	8.58	8.358	70	3	.168	$1\frac{1}{2}''$	$1\frac{1}{4}''$	$1\frac{5}{32}''$	$1/16''$	$2\frac{1}{2}''$	2.8
35H72	H	$3/8 - 1\frac{1}{2}$	8.81	8.597	72	3	.168	$1\frac{1}{2}''$	$1\frac{1}{4}''$	$1\frac{5}{32}''$	$1/16''$	$2\frac{1}{2}''$	3.0
35H80	H	$3/8 - 1\frac{1}{2}$	9.77	9.552	80	3	.168	$1\frac{1}{2}''$	$1\frac{1}{4}''$	$1\frac{5}{32}''$	$1/16''$	$2\frac{1}{2}''$	3.8
35H84	H	$3/8 - 1\frac{1}{2}$	10.25	10.029	84	3	.168	$1\frac{1}{2}''$	$1\frac{1}{4}''$	$1\frac{5}{32}''$	$1/16''$	$2\frac{1}{2}''$	4.0
35H96	H	$3/8 - 1\frac{1}{2}$	11.68	11.461	96	3	.168	$1\frac{1}{2}''$	$1\frac{1}{4}''$	$1\frac{5}{32}''$	$1/16''$	$2\frac{1}{2}''$	5.3
35H112	H	$3/8 - 1\frac{1}{2}$	13.59	13.371	112	3	.168	$1\frac{1}{2}''$	$1\frac{1}{4}''$	$1\frac{5}{32}''$	$1/16''$	$2\frac{1}{2}''$	6.8

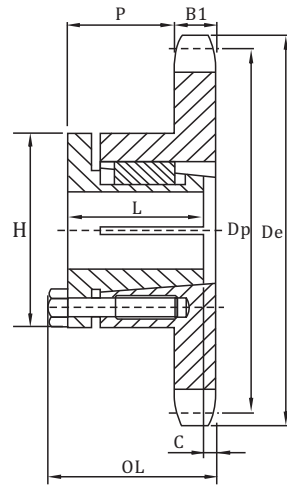
◇Pitch  $1/2''$       ◇Roller  $\Phi$   $0.306''$       ◇Tooth width B1  $0.227''$

### Single-Split Taper Bushed

Number	Bushing	Bore Range	De	Dp	Type	No. Teeth	B1	OL	L	P	H	Wt. Less (Bushing)
41G12	G	$3/8 - 1''$	2.17"	1.932"	3	12	.227"	$1\frac{7}{16}''$	$1\frac{7}{16}''$	$1\frac{1}{32}''$	2"	.3
41G14	G	$3/8 - 1''$	2.49	2.247	3	14	.227	$1\frac{7}{16}''$	$1\frac{7}{16}''$	$1\frac{1}{32}''$	2	.4
41H15	H	$3/8 - 1\frac{1}{2}$	2.65	2.405	3	15	.227	$1\frac{1}{2}''$	$1\frac{1}{4}''$	$1\frac{3}{32}''$	$2\frac{1}{2}''$	.5
41H16	H	$3/8 - 1\frac{1}{2}$	2.80	2.653	3	16	.227	$1\frac{1}{2}''$	$1\frac{1}{4}''$	$1\frac{3}{32}''$	$2\frac{1}{2}''$	.5
41H17	H	$3/8 - 1\frac{1}{2}$	2.96	2.721	3	17	.227	$1\frac{1}{2}''$	$1\frac{1}{4}''$	$1\frac{3}{32}''$	$2\frac{1}{2}''$	.6
41H18	H	$3/8 - 1\frac{1}{2}$	3.14	2.897	3	18	.227	$1\frac{1}{2}''$	$1\frac{1}{4}''$	$1\frac{3}{32}''$	$2\frac{1}{2}''$	.7
41H19	H	$3/8 - 1\frac{1}{2}$	3.30	3.038	3	19	.227	$1\frac{1}{2}''$	$1\frac{1}{4}''$	$1\frac{3}{32}''$	$2\frac{1}{2}''$	.8
41H19	H	$3/8 - 1\frac{1}{2}$	3.45	3.196	3	19	.227	$1\frac{1}{2}''$	$1\frac{1}{4}''$	$1\frac{3}{32}''$	$2\frac{1}{2}''$	.8
41H20	H	$3/8 - 1\frac{1}{2}$	3.62	3.355	3	20	.227	$1\frac{1}{2}''$	$1\frac{1}{4}''$	$1\frac{3}{32}''$	$2\frac{1}{2}''$	.9
41H21	H	$3/8 - 1\frac{1}{2}$	3.75	3.513	3	21	.227	$1\frac{1}{2}''$	$1\frac{1}{4}''$	$1\frac{3}{32}''$	$2\frac{1}{2}''$	.9
41H22	H	$3/8 - 1\frac{1}{2}$	3.94	3.672	3	22	.227	$1\frac{1}{2}''$	$1\frac{1}{4}''$	$1\frac{3}{32}''$	$2\frac{1}{2}''$	1.0
41H23	H	$3/8 - 1\frac{1}{2}$	4.10	3.813	3	23	.227	$1\frac{1}{2}''$	$1\frac{1}{4}''$	$1\frac{3}{32}''$	$2\frac{1}{2}''$	1.1
41H24	H	$3/8 - 1\frac{1}{2}$	4.26	3.989	3	24	.227	$1\frac{1}{2}''$	$1\frac{1}{4}''$	$1\frac{3}{32}''$	$2\frac{1}{2}''$	1.1
41H25	H	$3/8 - 1\frac{1}{2}$	4.42	4.158	3	25	.227	$1\frac{1}{2}''$	$1\frac{1}{4}''$	$1\frac{3}{32}''$	$2\frac{1}{2}''$	1.1
41H26	H	$3/8 - 1\frac{1}{2}$	4.58	4.307	3	26	.227	$1\frac{1}{2}''$	$1\frac{1}{4}''$	$1\frac{3}{32}''$	$2\frac{1}{2}''$	1.1
41H28	H	$3/8 - 1\frac{1}{2}$	4.70	4.466	3	28	.227	$1\frac{1}{2}''$	$1\frac{1}{4}''$	$1\frac{3}{32}''$	$2\frac{1}{2}''$	1.2
41H30	H	$3/8 - 1\frac{1}{2}$	5.06	4.783	3	30	.227	$1\frac{1}{2}''$	$1\frac{1}{4}''$	$1\frac{3}{32}''$	$2\frac{1}{2}''$	1.3
41H32	H	$3/8 - 1\frac{1}{2}$	5.38	5.101	3	32	.227	$1\frac{1}{2}''$	$1\frac{1}{4}''$	$1\frac{3}{32}''$	$2\frac{1}{2}''$	1.5
41H35	H	$3/8 - 1\frac{1}{2}$	5.86	5.578	3	35	.227	$1\frac{1}{2}''$	$1\frac{1}{4}''$	$1\frac{3}{32}''$	$2\frac{1}{2}''$	1.8
41P36	P	$3/8 - 3/4$	6.02	5.737	4	36	.227	$2\frac{3}{16}''$	$1\frac{5}{16}''$	$1\frac{1}{32}''$	3	2.5
41P40	P	$1/2 - 1\frac{1}{4}$	6.55	6.373	4	40	.227	$2\frac{3}{16}''$	$1\frac{5}{16}''$	$1\frac{1}{32}''$	3	3.0
41P42	P	$1/2 - 3/4$	6.97	6.691	4	42	.227	$2\frac{3}{16}''$	$1\frac{5}{16}''$	$1\frac{1}{32}''$	3	3.1
41P45	P	$1/2 - 3/4$	7.45	7.168	4	45	.227	$2\frac{3}{16}''$	$1\frac{5}{16}''$	$1\frac{1}{32}''$	3	3.5
41P48	P	$1/2 - 3/4$	7.93	7.645	4	48	.227	$2\frac{3}{16}''$	$1\frac{5}{16}''$	$1\frac{1}{32}''$	3	4.0
41P54	P	$1/2 - 1\frac{1}{4}$	8.89	8.599	4	54	.227	$2\frac{3}{16}''$	$1\frac{5}{16}''$	$1\frac{1}{32}''$	3	4.6
41P60	P	$1/2 - 1\frac{1}{4}$	9.84	9.554	4	60	.227	$2\frac{3}{16}''$	$1\frac{5}{16}''$	$1\frac{1}{32}''$	3	5.5
41P70	P	$1/2 - 1\frac{1}{4}$	11.43	11.145	4	70	.227	$2\frac{3}{16}''$	$1\frac{5}{16}''$	$1\frac{1}{32}''$	3	7.0
41P72	P	$1/2 - 3/4$	11.75	11.463	4	72	.227	$2\frac{3}{16}''$	$1\frac{5}{16}''$	$1\frac{1}{32}''$	3	7.9
41P80	P	$1/2 - 1\frac{1}{4}$	13.03	12.736	4	80	.227	$2\frac{3}{16}''$	$1\frac{5}{16}''$	$1\frac{1}{32}''$	3	9.0
41P84	P	$1/2 - 1\frac{1}{4}$	13.66	13.372	4	84	.227	$2\frac{3}{16}''$	$1\frac{5}{16}''$	$1\frac{1}{32}''$	3	9.9
41P96	P	$1/2 - 1\frac{1}{4}$	15.57	15.281	4	96	.227	$2\frac{3}{16}''$	$1\frac{5}{16}''$	$1\frac{1}{32}''$	3	1.1
41P112	P	$1/2 - 1\frac{1}{4}$	18.12	17.828	4	112	.227	$2\frac{3}{16}''$	$1\frac{5}{16}''$	$1\frac{1}{32}''$	3	1.1



TYPE 3



TYPE 4

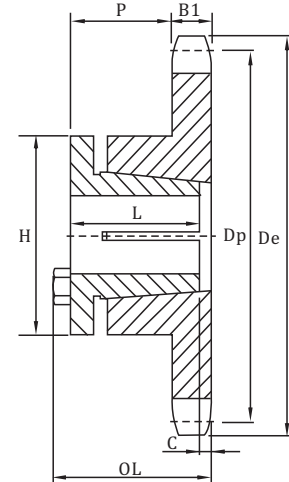
# Sprockets With Split Taper Bushings American Standard Series

No.40

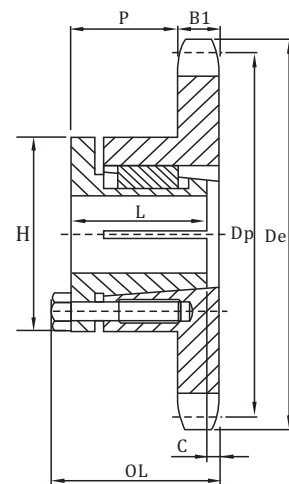
◇Pitch 1/2" ◇Roller Φ 0.312" ◇Tooth width B1 0.284"

## Single-Split Taper Bushed

Number	Bushing	Bore Range	De	Dp	No. Teeth	Type	B1	OL	L	P	C	H	Wt. Less (Bushing)
H40G12	G	3/8 - 1"	2.17"	1.932"	12	3	.284"	1 1/2"	1"	1 1/32"	5/16"	2"	.3
H40G13	G	3/8 - 1	2.30	2.089	13	3	.284	1 1/2	1	1 1/32	5/16	2	.4
H40G14	G	3/8 - 1	2.49	2.247	14	3	.284	1 1/2	1	1 1/32	5/16	2	.4
H40H15	H	3/8 - 1 1/2	2.65	2.405	15	3	.284	1 19/32	1 1/4	1 1/8	5/32	2 1/2	.5
H40H16	H	3/8 - 1 1/2	2.80	2.563	16	3	.284	1 19/32	1 1/4	1 1/8	5/32	2 1/2	.6
H40H17	H	3/8 - 1 1/2	2.96	2.721	17	3	.284	1 1/2	1 1/4	1 1/32	5/16	2 1/2	.6
H40H18	H	3/8 - 1 1/2	3.14	2.879	18	3	.284	1 1/2	1 1/4	1 1/32	5/16	2 1/2	.6
H40P18	P1	1/2 - 3/4	3.14	2.879	18	4	.284	2 3/16	1 15/16	1 21/32	0	3	1.4
H40H19	H	3/8 - 1 1/2	3.30	3.038	19	3	.284	1 1/2	1 1/4	1 1/32	5/16	2 1/2	.8
H40P19	P1	1/2 - 3/4	3.30	3.038	19	4	.284	2 3/16	1 15/16	1 21/32	0	3	1.3
H40H20	H	3/8 - 1 1/2	3.45	3.196	20	3	.284	1 1/2	1 1/4	1 1/32	5/16	2 1/2	.9
H40P20	P1	1/2 - 3/4	3.45	3.196	20	4	.284	2 3/16	1 15/16	1 21/32	0	3	.9
H40H21	H	3/8 - 1 1/2	3.62	3.355	21	3	.284	1 1/2	1 1/4	1 1/32	5/16	2 1/2	.9
H40P21	P1	1/2 - 3/4	3.62	3.355	21	4	.284	2 3/16	1 15/16	1 21/32	0	3	1.5
H40H22	H	3/8 - 1 1/2	3.75	3.513	22	3	.284	1 1/2	1 1/4	1 1/32	5/16	2 1/2	1.0
H40P22	P1	1/2 - 3/4	3.75	3.513	22	4	.284	2 3/16	1 15/16	1 21/32	0	3	1.6
H40H23	H	3/8 - 1 1/2	3.94	3.672	23	3	.284	1 1/2	1 1/4	1 1/32	5/16	2 1/2	1.0
H40P23	P1	1/2 - 3/4	3.94	3.672	23	4	.284	2 3/16	1 15/16	1 21/32	0	3	1.7
H40H24	H	3/8 - 1 1/2	4.10	3.831	24	3	.284	1 1/2	1 1/4	1 1/32	5/16	2 1/2	1.1
H40P24	P1	1/2 - 3/4	4.10	3.831	24	4	.284	2 3/16	1 15/16	1 21/32	0	3	1.8
H40H25	H	3/8 - 1 1/2	4.26	3.989	25	3	.284	1 1/2	1 1/4	1 1/32	5/16	2 1/2	1.3
H40P25	P1	1/2 - 3/4	4.26	3.989	25	4	.284	2 3/16	1 15/16	1 21/32	0	3	1.9
H40H26	H	3/8 - 1 1/2	4.42	4.148	26	3	.284	1 1/2	1 1/4	1 1/32	5/16	2 1/2	1.3
H40P26	P1	1/2 - 3/4	4.42	4.148	26	4	.284	2 3/16	1 15/16	1 21/32	0	3	1.9
H40H27	H	3/8 - 1 1/2	4.58	4.307	27	3	.284	1 1/2	1 1/4	1 1/32	5/16	2 1/2	1.4
H40H28	H	3/8 - 1 1/2	4.74	4.466	28	3	.284	1 1/2	1 1/4	1 1/32	5/16	2 1/2	1.4
H40P28	P1	1/2 - 3/4	4.74	4.466	28	4	.284	2 3/16	1 15/16	1 21/32	0	3	2.1
H40P29	P1	1/2 - 3/4	4.90	4.625	29	4	.284	2 3/16	1 15/16	1 21/32	0	3	2.3
H40H30	H	3/8 - 1 1/2	5.06	4.783	30	3	.284	1 1/2	1 1/4	1 1/32	5/16	2 1/2	1.6
H40P30	P1	1/2 - 3/4	5.06	4.783	30	4	.284	2 3/16	1 15/16	1 21/32	0	3	2.3
H40H32	H	3/8 - 1 1/2	5.38	5.101	32	3	.284	1 1/2	1 1/4	1 1/32	5/16	2 1/2	1.8
H40H33	H	3/8 - 1 1/2	5.54	5.260	33	3	.284	1 1/2	1 1/4	1 1/32	5/16	2 1/2	1.9
H40H35	H	3/8 - 1 1/2	5.86	5.578	35	3	.284	1 1/2	1 1/4	1 1/32	5/16	2 1/2	2.1
H40H36	H	3/8 - 1 1/2	6.02	5.737	36	3	.284	1 1/2	1 1/4	1 1/32	5/16	2 1/2	2.3
H40H38	H	3/8 - 1 1/2	6.33	6.055	38	3	.284	1 1/2	1 1/4	1 1/32	5/16	2 1/2	2.6
H40H40	H	3/8 - 1 1/2	6.65	6.373	40	3	.284	1 1/2	1 1/4	1 1/32	5/16	2 1/2	2.8
40G12	G	3/8 - 1"	2.17"	1.923"	12	3	.284	1 1/2"	1"	1 1/32"	5/16"	2"	.3
40G13	G	3/8 - 1	2.30	2.089	13	3	.284	1 1/2	1	1 1/32	5/16	2	.4
40G14	G	3/8 - 1	2.49	2.247	14	3	.284	1 1/2	1	1 1/32	5/16	2	.5
40H15	H	3/8 - 1 1/2	2.65	2.405	15	3	.284	1 19/32	1 1/4	1 1/8	5/32	2 1/2	.5
40G16	G	3/8 - 1	2.80	2.563	16	3	.284	1 1/4	1	25/32	5/16	2	.4
40H16	H	3/8 - 1 1/2	2.80	2.563	16	3	.284	1 19/32	1 1/4	1 1/8	5/32	2 1/2	.6
40H17	H	3/8 - 1 1/2	2.96	2.721	17	3	.284	1 1/2	1 1/4	1 1/32	5/16	2 1/2	.6
40H18	H	3/8 - 1 1/2	3.14	2.879	18	3	.284	1 1/2	1 1/4	1 1/32	5/16	2 1/2	.7
40P18	P1	1/2 - 3/4	3.14	2.879	18	4	.284	2 3/16	1 15/16	1 21/32	0	3	1.2
40H19	H	3/8 - 1 1/2	3.30	3.038	19	3	.284	1 1/2	1 1/4	1 1/32	5/16	2 1/2	.8
40P19	P1	1/2 - 3/4	3.30	3.038	19	4	.284	2 3/16	1 15/16	1 21/32	0	3	1.3
40H20	H	3/8 - 1 1/2	3.45	3.196	20	3	.284	1 1/2	1 1/4	1 1/32	5/16	2 1/2	.8
40P20	P1	1/2 - 3/4	3.45	3.196	20	4	.284	2 3/16	1 15/16	1 21/32	0	3	1.3
40H21	H	3/8 - 1 1/2	3.62	3.355	21	3	.284	1 1/2	1 1/4	1 1/32	5/16	2 1/2	.9
40P21	P1	1/2 - 3/4	3.62	3.355	21	4	.284	2 3/16	1 15/16	1 21/32	0	3	1.5
40H22	H	3/8 - 1 1/2	3.75	3.513	22	3	.284	1 1/2	1 1/4	1 1/32	5/16	2 1/2	.9
40P22	P1	1/2 - 3/4	3.75	3.513	22	4	.284	2 3/16	1 15/16	1 21/32	0	3	.6
40H23	H	3/8 - 1 1/2	3.94	3.672	23	3	.284	1 1/2	1 1/4	1 1/32	5/16	2 1/2	1.0
40P23	P1	1/2 - 3/4	3.94	3.672	23	4	.284	2 3/16	1 15/16	1 21/32	0	3	1.7
40H24	H	3/8 - 1 1/2	4.10	3.831	24	3	.284	1 1/2	1 1/4	1 1/32	5/16	2 1/2	1.2
40P24	P1	1/2 - 3/4	4.10	3.831	24	4	.284	2 3/16	1 15/16	1 21/32	0	3	1.8
40H25	H	3/8 - 1 1/2	4.26	3.989	25	3	.284	1 1/2	1 1/4	1 1/32	5/16	2 1/2	1.3
40P25	P1	1/2 - 3/4	4.26	3.989	25	4	.284	2 3/16	1 15/16	1 21/32	0	3	2.0
40H26	H	3/8 - 1 1/2	4.42	4.148	26	3	.284	1 1/2	1 1/4	1 1/32	5/16	2 1/2	1.4
40P26	P1	1/2 - 3/4	4.42	4.148	26	4	.284	2 3/16	1 15/16	1 21/32	0	3	2.0
40H27	H	3/8 - 1 1/2	4.58	4.307	27	3	.284	1 1/2	1 1/4	1 1/32	5/16	2 1/2	1.4
40P27	P1	1/2 - 3/4	4.58	4.307	27	4	.284	2 3/16	1 15/16	1 21/32	0	3	2.1
40H28	H	3/8 - 1 1/2	4.74	4.466	28	3	.284	1 1/2	1 1/4	1 1/32	5/16	2 1/2	1.5
40P28	P1	1/2 - 3/4	4.74	4.466	28	4	.284	2 3/16	1 15/16	1 21/32	0	3	2.2
40P29	P1	1/2 - 3/4	4.90	4.625	29	4	.284	2 3/16	1 15/16	1 21/32	0	3	2.3
40H30	H	3/8 - 1 1/2	5.06	4.783	30	3	.284	1 1/2	1 1/4	1 1/32	5/16	2 1/2	1.6
40P30	P1	1/2 - 3/4	5.06	4.783	30	4	.284	2 3/16	1 15/16	1 21/32	0	3	2.4
40P31	P1	1/2 - 3/4	5.22	4.942	31	4	.284	2 3/16	1 15/16	1 21/32	0	3	2.5
40P32	P1	1/2 - 3/4	5.38	5.101	32	4	.284	2 3/16	1 15/16	1 21/32	0	3	2.6
40P33	P1	1/2 - 3/4	5.54	5.260	33	4	.284	2 3/16	1 15/16	1 21/32	0	3	2.6



TYPE 3



TYPE 4

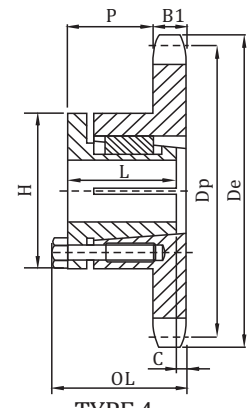
# Sprockets With Split Taper Bushings American Standard Series

No.40  
No.40-2

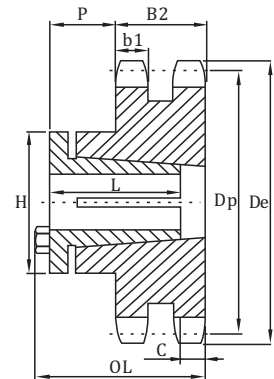
◇ Pitch 1/2"   ◇ Roller Φ 0.312"   ◇ Tooth width B1 0.284"

## Single-Split Taper Bushed

Number	Bushing	Bore Range	De	Dp	No. Teeth	Type	B1	OL	L	P	C	H	Wt. Less (Bushing)
40P34	P1	1/2 - 3/4"	5.70"	5.419"	34	4	.284"	2 3/16"	1 15/16"	1 29/32"	0	3"	2.8
40P35	P1	1/2 - 3/4"	5.86	5.578	35	4	.284	2 3/16	1 15/16	1 29/32	0	3	2.9
40P36	P1	1/2 - 3/4"	6.02	5.737	36	4	.284	2 3/16	1 15/16	1 29/32	0	3	3.1
40P37	P1	1/2 - 3/4"	6.18	5.896	37	4	.284	2 3/16	1 15/16	1 29/32	0	3	3.3
40P38	P1	1/2 - 3/4"	6.33	6.055	38	4	.284	2 3/16	1 15/16	1 29/32	0	3	3.3
40P40	P1	1/2 - 3/4"	6.65	6.373	40	4	.284	2 3/16	1 15/16	1 29/32	0	3	3.5
40P41	P1	1/2 - 3/4"	6.81	6.532	41	4	.284	2 3/16	1 15/16	1 29/32	0	3	3.6
40P42	P1	1/2 - 3/4"	6.97	6.691	42	4	.284	2 3/16	1 15/16	1 29/32	0	3	3.9
40P44	P1	1/2 - 3/4"	7.29	7.009	44	4	.284	2 3/16	1 15/16	1 29/32	0	3	4.0
40P45	P1	1/2 - 3/4"	7.45	7.168	45	4	.284	2 3/16	1 15/16	1 29/32	0	3	4.2
40P47	P1	1/2 - 3/4"	7.77	7.486	47	4	.284	2 3/16	1 15/16	1 29/32	0	3	4.6
40P48	P1	1/2 - 3/4"	7.93	7.645	48	4	.284	2 3/16	1 15/16	1 29/32	0	3	4.8
40P50	P1	1/2 - 3/4"	8.25	7.963	50	4	.284	2 3/16	1 15/16	1 29/32	0	3	5.0
40P54	P1	1/2 - 3/4"	8.89	8.599	54	4	.284	2 3/16	1 15/16	1 29/32	0	3	5.5
40P56	P1	1/2 - 3/4"	9.20	8.917	56	4	.284	2 3/16	1 15/16	1 29/32	0	3	5.9
40P60	P1	1/2 - 3/4"	9.84	9.554	60	4	.284	2 3/16	1 15/16	1 29/32	0	3	6.6
40Q60	Q1	3/4 - 2 1/16"	9.84	9.554	60	4	.284	2 25/32	2 1/2	2 7/32	0	4 1/8	8.8
40P70	P1	1/2 - 3/4"	11.43	11.145	70	4	.284	2 3/16	1 15/16	2 29/32	0	3	8.6
40Q70	Q1	3/4 - 2 1/16"	11.43	11.145	70	4	.284	2 25/32	2 1/2	1 7/32	0	4 1/8	11.0
40P72	Q1	3/4 - 2 1/16"	11.75	11.463	72	4	.284	2 25/32	2 1/2	2 7/32	0	4 1/8	11.2
40Q80	Q1	3/4 - 2 1/16"	13.13	12.736	80	4	.284	2 25/32	2 1/2	2 7/32	0	4 1/8	13.1
40P84	Q1	3/4 - 2 1/16"	13.66	13.372	84	4	.284	2 25/32	2 1/2	2 7/32	0	4 1/8	14.1
40Q96	Q1	3/4 - 2 1/16"	15.57	15.281	96	4	.284	2 25/32	2 1/2	2 7/32	0	4 1/8	17.3
40Q112	Q1	3/4 - 2 1/16"	18.12	17.828	112	4	.284	2 25/32	2 1/2	2 7/32	0	4 1/8	12.8



TYPE 4

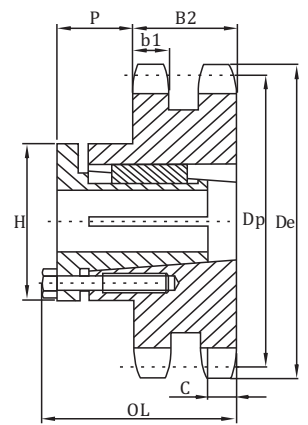


TYPE 11

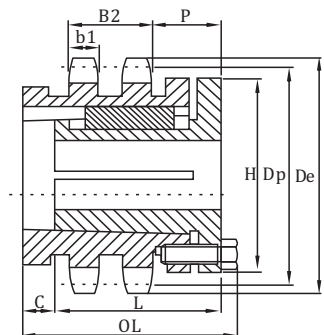
◇ Pitch 1/2"   ◇ Roller Φ 0.312"  
◇ Tooth width B1 0.275"   ◇ Tooth width B2 0.841"

## Double-Split Taper Bushed

Number	Bushing	Bore Range	De	Dp	No. Teeth	Type	b1	B2	OL	L	P	C	H	Wt. Less (Bushing)
D40H15	H	3/8 - 1 1/2"	2.65"	2.405"	15	11	.275"	.841"	2 5/32"	1 1/8"	1 1/8"	23/32"	2 1/2"	.9
D40H16	H	3/8 - 1 1/2"	2.80	2.563	16	11	.275	.841	2 5/32	1 1/8	1 1/8	23/32	2 1/2	1.0
D40H17	H	3/8 - 1 1/2"	2.96	2.721	17	11	.275	.841	2 5/32	1 1/8	1 1/8	23/32	2 1/2	1.1
D40P18	P1	3/8 - 1 3/4"	3.14	2.879	18	16	.275	.841	3 1/16	1 15/16	1 3/8	1	3	1.8
D40P19	P1	1/2 - 1 3/4"	3.30	3.038	19	12	.275	.841	2 15/32	1 15/16	1 3/8	7/32	3	1.4
D40P20	P1	1/2 - 1 3/4"	3.45	3.196	20	12	.275	.841	2 15/32	1 15/16	1 3/8	7/32	3	1.6
D40P21	P1	1/2 - 1 3/4"	3.62	3.355	21	12	.275	.841	2 15/32	1 15/16	1 3/8	7/32	3	1.8
D40P22	P1	1/2 - 1 3/4"	3.75	3.513	22	12	.275	.841	2 15/32	1 15/16	1 3/8	7/32	3	2.0
D40P23	P1	1/2 - 1 3/4"	3.94	3.672	23	12	.275	.841	2 3/16	1 15/16	1 3/8	0	3	2.0
D40P24	P1	1/2 - 1 3/4"	4.10	3.831	24	12	.275	.841	2 3/16	1 15/16	1 3/32	0	3	2.2
D40P25	P1	1/2 - 1 3/4"	4.26	3.989	25	12	.275	.841	2 3/16	1 15/16	1 3/32	0	3	2.5
D40P26	P1	1/2 - 1 3/4"	4.42	4.148	26	12	.275	.841	2 3/16	1 15/16	1 3/32	0	3	2.7
D40P28	P1	1/2 - 1 3/4"	4.70	4.466	28	12	.275	.841	2 3/16	1 15/16	1 3/32	0	3	3.1
D40Q30	Q1	3/4 - 2 1/16"	5.06	4.783	30	12	.275	.841	2 25/32	2 1/2	1 29/32	0	4 1/8	4.2
D40Q32	Q1	3/4 - 2 1/16"	5.38	5.101	32	12	.275	.841	2 25/32	2 1/2	1 29/32	0	4 1/8	5.3
D40Q35	Q1	3/4 - 2 1/16"	5.86	5.578	35	12	.275	.841	2 25/32	2 1/2	1 29/32	0	4 1/8	6.1
D40Q36	Q1	3/4 - 2 1/16"	6.02	5.737	36	12	.275	.841	2 25/32	2 1/2	1 29/32	0	4 1/8	6.5
D40Q40	Q1	3/4 - 2 1/16"	6.65	6.373	40	12	.275	.841	2 25/32	2 1/2	1 29/32	0	4 1/8	7.9
D40Q42	Q1	3/4 - 2 1/16"	6.97	6.691	42	12	.275	.841	2 25/32	2 1/2	1 29/32	0	4 1/8	8.9
D40Q45	Q1	3/4 - 2 1/16"	7.45	7.168	45	12	.275	.841	2 25/32	2 1/2	1 29/32	0	4 1/8	10.1
D40Q48	Q1	3/4 - 2 1/16"	7.93	7.645	48	12	.275	.841	2 25/32	2 1/2	1 29/32	0	4 1/8	11.8
D40Q52	Q1	3/4 - 2 1/16"	8.57	8.281	52	12	.275	.841	2 25/32	2 1/2	1 29/32	0	4 1/8	12.6
D40Q54	Q1	3/4 - 2 1/16"	8.89	8.599	54	12	.275	.841	2 25/32	2 1/2	1 29/32	0	4 1/8	14.3
D40Q60	Q1	3/4 - 2 1/16"	9.84	9.554	60	12	.275	.841	2 25/32	2 1/2	1 29/32	0	4 1/8	17.4
D40Q68	Q1	3/4 - 2 1/16"	11.12	10.826	68	12	.275	.841	2 25/32	2 1/2	1 29/32	0	4 1/8	21.5
D40Q72	Q1	3/4 - 2 1/16"	11.75	11.463	72	12	.275	.841	2 25/32	2 1/2	1 29/32	0	4 1/8	25.0
D40Q76	Q1	3/4 - 2 1/16"	12.39	12.099	76	12	.275	.841	2 25/32	2 1/2	1 29/32	0	4 1/8	26.9
D40Q84	Q1	3/4 - 2 1/16"	13.66	13.372	84	12	.275	.841	2 25/32	2 1/2	1 29/32	0	4 1/8	34.1
D40Q95	Q1	3/4 - 2 1/16"	15.41	15.122	95	12	.275	.841	2 25/32	2 1/2	1 29/32	0	4 1/8	42.0
D40Q96	Q1	3/4 - 2 1/16"	15.57	15.281	96	12	.275	.841	2 25/32	2 1/2	1 29/32	0	4 1/8	44.1
D40Q102	Q1	3/4 - 2 1/16"	16.53	16.236	102	12	.275	.841	2 25/32	2 1/2	1 29/32	0	4 1/8	48.5
D40Q112	Q1	3/4 - 2 1/16"	18.12	17.828	112	12	.275	.841	2 25/32	2 1/2	1 29/32	0	4 1/8	61.0



TYPE 12

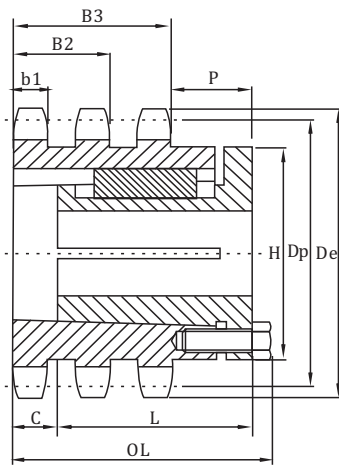


TYPE 16

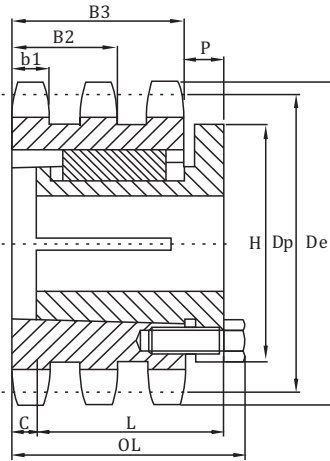
# Sprockets With Split Taper Bushings American Standard Series

No.40-3

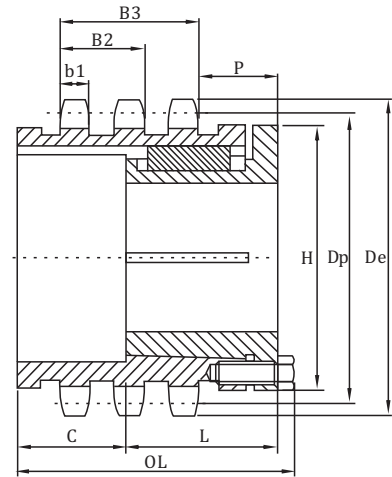
◇ Pitch 1/2"    ◇ Roller Φ 0.312"  
◇ Tooth width B1 0.275"    ◇ Tooth width B2 0.841"    ◇ Tooth width B3 1.407"



TYPE 22



TYPE 23



TYPE 27



## Triple-Split Taper Bushed

Number	Bushing	Bore Range	De	Dp	No. Teeth	Type	b1	B3	OL	L	P	C	H	Wt. Less (Bushing)
T40P18	P1	1/2 - 1 3/4"	3.14"	2.879"	18	27	.275"	1.407"	3 3/4"	1 15/16"	1 3/8"	1 9/16"	3	1.9
T40P19	P1	1/2 - 1 3/4"	3.30	3.038	19	22	.275	1.407	3 1/2	1 15/16	1 3/8	2 7/32	3	1.8
T40P20	P1	1/2 - 1 3/4"	3.46	3.196	20	22	.275	1.407	2 3 1/2	1 15/16	1 7/16	2 5/32	3	2.0
T40P23	P1	1/2 - 1 3/4"	3.94	3.672	23	23	.275	1.407	2 9/32	1 15/16	7/8	3 3/32	3	2.3
T40P24	P1	1/2 - 1 3/4"	4.10	3.831	24	23	.275	1.407	2 7/32	1 15/16	7/8	3 7/32	3	2.6
T40P25	P1	1/2 - 1 3/4"	4.26	3.989	25	23	.275	1.407	2 9/32	1 15/16	7/8	3 3/32	3	3.0
T40P27	P1	1/2 - 1 3/4"	4.58	4.307	27	23	.275	1.407	2 7/32	1 15/16	7/8	3 7/32	3	3.3
T40Q30	Q1	3/4 - 2 1 1/16	5.06	4.783	30	22	.275	1.407	2 25/32	2 1/2	1 3/32	0	4 7/8	4.5
T40Q35	Q1	3/4 - 2 1 1/16	5.86	5.578	35	22	.275	1.407	2 25/32	2 1/2	1 3/32	0	4 7/8	6.9
T40Q36	Q1	3/4 - 2 1 1/16	6.02	5.737	36	22	.275	1.407	2 25/32	2 1/2	1 3/32	0	4 7/8	7.6
T40Q42	Q1	3/4 - 2 1 1/16	6.97	6.691	42	22	.275	1.407	2 25/32	2 1/2	1 3/32	0	4 7/8	11.1
T40Q48	Q1	3/4 - 2 1 1/16	7.93	7.645	48	22	.275	1.407	2 25/32	2 1/2	1 3/32	0	4 7/8	15.2
T40Q52	Q1	3/4 - 2 1 1/16	8.57	8.281	52	22	.275	1.407	2 25/32	2 1/2	1 3/32	0	4 7/8	18.7
T40Q54	Q1	3/4 - 2 1 1/16	8.89	8.599	54	22	.275	1.407	2 25/32	2 1/2	1 3/32	0	4 7/8	19.9
T40Q60	Q1	3/4 - 2 1 1/16	9.84	9.554	60	22	.275	1.407	2 25/32	2 1/2	1 3/32	0	4 7/8	25.3
T40Q68	Q1	3/4 - 2 1 1/16	11.12	10.826	68	22	.275	1.407	2 25/32	2 1/2	1 3/32	0	4 7/8	33.5
T40Q72	Q1	3/4 - 2 1 1/16	11.75	11.463	72	22	.275	1.407	2 25/32	2 1/2	1 3/32	0	4 7/8	37.9
T40Q76	Q1	3/4 - 2 1 1/16	12.39	12.099	76	22	.275	1.407	2 25/32	2 1/2	1 3/32	0	4 7/8	42.5
T40Q84	Q1	3/4 - 2 1 1/16	13.66	13.372	84	22	.275	1.407	2 25/32	2 1/2	1 3/32	0	4 7/8	52.4
T40Q95	Q1	3/4 - 2 1 1/16	15.41	15.122	95	22	.275	1.407	2 25/32	2 1/2	1 3/32	0	4 7/8	67.9
T40Q102	Q1	3/4 - 2 1 1/16	16.53	16.236	102	22	.275	1.407	2 25/32	2 1/2	1 3/32	0	4 7/8	78.5

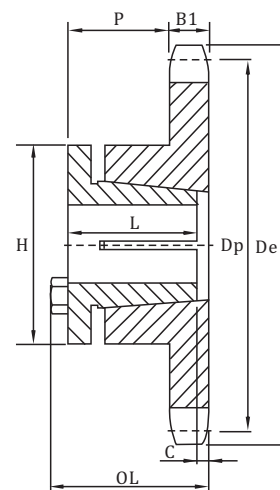
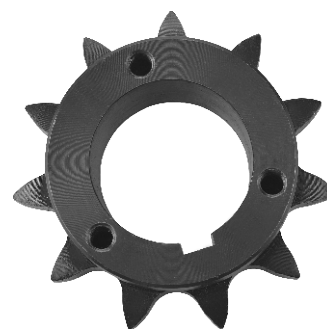
# Sprockets With Split Taper Bushings American Standard Series

No.50

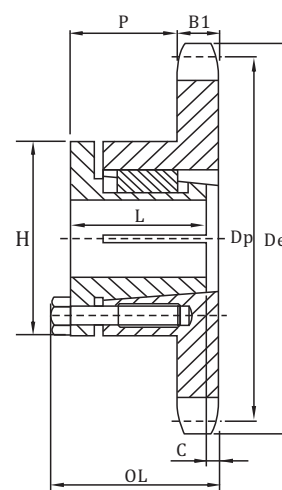
◇ Pitch  $5/8"$  ◇ Roller  $\Phi$   $0.400"$  ◇ Tooth width B1  $0.343"$

## Single-Split Taper Bushed

Number	Bushing	Bore Range	De	Dp	No. Teeth	Type	B1	OL	L	P	C	H	Wt. Less (Bushing)
H50G11	G	$\frac{3}{8}-1"$	2.50"	2.219"	11	3	.343"	$1\frac{9}{32}"$	1"	$1\frac{1}{16}"$	$\frac{13}{32}"$	2"	.4
H50G12	G	$\frac{3}{8}-1$	2.70	2.415	12	3	.343	$1\frac{9}{32}"$	1	$1\frac{1}{16}"$	$\frac{13}{32}"$	2	.5
H50G13	G	$\frac{3}{8}-1$	2.91	2.612	13	3	.343	$1\frac{1}{4}"$	1	$\frac{23}{32}"$	$\frac{1}{16}"$	2	.5
H50H13	H	$\frac{3}{8}-1\frac{1}{2}"$	2.91	2.612	13	3	.343	$2\frac{3}{32}"$	$1\frac{1}{4}"$	$1\frac{1}{8}"$	$\frac{7}{32}"$	$2\frac{1}{2}"$	.6
H50H14	H	$\frac{3}{8}-1\frac{1}{2}"$	3.11	2.809	14	3	.343	$1\frac{9}{32}"$	$1\frac{1}{4}"$	$1\frac{1}{16}"$	$\frac{5}{32}"$	$2\frac{1}{2}"$	.6
H50H15	H	$\frac{3}{8}-1\frac{1}{2}"$	3.32	3.006	15	3	.343	$1\frac{1}{2}"$	$1\frac{1}{4}"$	$\frac{3}{32}"$	$\frac{1}{16}"$	$2\frac{1}{2}"$	.8
H50P15	P1	$\frac{1}{2}-1\frac{3}{4}"$	3.32	3.006	15	4	.343	$2\frac{3}{16}"$	$1\frac{17}{16}"$	$1\frac{19}{32}"$	0	3	1.1
H50H16	H	$\frac{3}{8}-1\frac{1}{2}"$	3.52	3.204	16	3	.343	$1\frac{1}{2}"$	$1\frac{1}{4}"$	$\frac{3}{32}"$	$\frac{1}{16}"$	$2\frac{1}{2}"$	.9
H50P16	P1	$\frac{1}{2}-1\frac{3}{4}"$	3.52	3.204	16	4	.343	$2\frac{3}{16}"$	$1\frac{17}{16}"$	$1\frac{19}{32}"$	0	3	1.4
H50H17	H	$\frac{3}{8}-1\frac{1}{2}"$	3.72	3.401	17	3	.343	$1\frac{1}{2}"$	$1\frac{1}{4}"$	$\frac{3}{32}"$	$\frac{1}{16}"$	2	1.0
H50P17	P1	$\frac{1}{2}-1\frac{3}{4}"$	3.72	3.401	17	4	.343	$2\frac{3}{16}"$	$1\frac{17}{16}"$	$1\frac{19}{32}"$	0	3	1.4
H50H18	H	$\frac{3}{8}-1\frac{1}{2}"$	3.92	3.559	18	3	.343	$1\frac{1}{2}"$	$1\frac{1}{4}"$	$\frac{3}{32}"$	$\frac{1}{16}"$	$2\frac{1}{2}"$	1.1
H50P18	P1	$\frac{1}{2}-1\frac{3}{4}"$	3.92	3.559	18	4	.343	$2\frac{3}{16}"$	$1\frac{17}{16}"$	$1\frac{19}{32}"$	0	3	1.8
H50H19	H	$\frac{3}{8}-1\frac{1}{2}"$	4.12	3.797	19	3	.343	$1\frac{1}{2}"$	$1\frac{1}{4}"$	$\frac{3}{32}"$	$\frac{1}{16}"$	$2\frac{1}{2}"$	1.3
H50P19	P1	$\frac{1}{2}-1\frac{3}{4}"$	4.12	3.797	19	4	.343	$2\frac{3}{16}"$	$1\frac{17}{16}"$	$1\frac{19}{32}"$	0	3	1.8
H50H20	H	$\frac{3}{8}-1\frac{1}{2}"$	4.32	3.995	20	3	.343	$1\frac{1}{2}"$	$1\frac{1}{4}"$	$\frac{3}{32}"$	$\frac{1}{16}"$	$2\frac{1}{2}"$	1.5
H50P20	P1	$\frac{1}{2}-1\frac{3}{4}"$	4.32	3.995	20	4	.343	$2\frac{3}{16}"$	$1\frac{17}{16}"$	$1\frac{19}{32}"$	0	3	2.0
H50H21	H	$\frac{3}{8}-1\frac{1}{2}"$	4.52	4.194	21	3	.343	$1\frac{1}{2}"$	$1\frac{1}{4}"$	$\frac{3}{32}"$	$\frac{1}{16}"$	$2\frac{1}{2}"$	1.4
H50P21	P1	$\frac{1}{2}-1\frac{3}{4}"$	4.52	4.194	21	4	.343	$2\frac{3}{16}"$	$1\frac{17}{16}"$	$1\frac{19}{32}"$	0	3	2.1
H50H22	H	$\frac{3}{8}-1\frac{1}{2}"$	4.72	4.392	22	3	.343	$1\frac{1}{2}"$	$1\frac{1}{4}"$	$\frac{3}{32}"$	$\frac{1}{16}"$	$2\frac{1}{2}"$	1.5
H50P22	P1	$\frac{1}{2}-1\frac{3}{4}"$	4.72	4.392	22	4	.343	$2\frac{3}{16}"$	$1\frac{17}{16}"$	$1\frac{19}{32}"$	0	3	2.2
H50H23	H	$\frac{3}{8}-1\frac{1}{2}"$	4.92	4.590	23	3	.343	$1\frac{1}{2}"$	$1\frac{1}{4}"$	$\frac{3}{32}"$	$\frac{1}{16}"$	$2\frac{1}{2}"$	1.7
H50P23	P1	$\frac{1}{2}-1\frac{3}{4}"$	4.92	4.590	23	4	.343	$2\frac{3}{16}"$	$1\frac{17}{16}"$	$1\frac{19}{32}"$	0	3	2.4
H50Q23	Q1	$\frac{3}{4}-2\frac{1}{16}"$	4.92	4.590	23	4	.343	$2\frac{25}{32}"$	$2\frac{1}{2}"$	$2\frac{7}{32}"$	0	$4\frac{1}{8}"$	3.2
H50H24	H	$\frac{3}{8}-1\frac{1}{2}"$	5.12	4.788	24	3	.343	$1\frac{1}{2}"$	$1\frac{1}{4}"$	$\frac{3}{32}"$	$\frac{1}{16}"$	$2\frac{1}{2}"$	1.8
H50P24	P1	$\frac{1}{2}-1\frac{3}{4}"$	5.12	4.788	24	4	.343	$2\frac{3}{16}"$	$1\frac{17}{16}"$	$1\frac{19}{32}"$	0	3	2.6
H50Q24	Q1	$\frac{3}{4}-2\frac{1}{16}"$	5.12	4.788	24	4	.343	$2\frac{25}{32}"$	$2\frac{1}{2}"$	$2\frac{7}{32}"$	0	$4\frac{1}{8}"$	3.5
H50H25	H	$\frac{3}{8}-1\frac{1}{2}"$	5.32	4.987	25	3	.343	$1\frac{1}{2}"$	$1\frac{1}{4}"$	$\frac{3}{32}"$	$\frac{1}{16}"$	$2\frac{1}{2}"$	1.9
H50P25	P1	$\frac{1}{2}-1\frac{3}{4}"$	5.32	4.987	25	4	.343	$2\frac{3}{16}"$	$1\frac{17}{16}"$	$1\frac{19}{32}"$	0	3	2.7
H50Q25	Q1	$\frac{3}{4}-2\frac{1}{16}"$	5.32	4.987	25	4	.343	$2\frac{25}{32}"$	$2\frac{1}{2}"$	$2\frac{7}{32}"$	0	$4\frac{1}{8}"$	3.6
H50H26	H	$\frac{3}{8}-1\frac{1}{2}"$	5.52	5.185	26	3	.343	$1\frac{1}{2}"$	$1\frac{1}{4}"$	$\frac{3}{32}"$	$\frac{1}{16}"$	$2\frac{1}{2}"$	2.0
H50P26	P1	$\frac{1}{2}-1\frac{3}{4}"$	5.52	5.185	26	4	.343	$2\frac{3}{16}"$	$1\frac{17}{16}"$	$1\frac{19}{32}"$	0	3	2.8
H50Q26	Q1	$\frac{3}{4}-2\frac{1}{16}"$	5.52	5.185	26	4	.343	$2\frac{25}{32}"$	$2\frac{1}{2}"$	$2\frac{7}{32}"$	0	$4\frac{1}{8}"$	3.7
H50H27	H	$\frac{3}{8}-1\frac{1}{2}"$	5.72	5.384	27	3	.343	$1\frac{1}{2}"$	$1\frac{1}{4}"$	$\frac{3}{32}"$	$\frac{1}{16}"$	$2\frac{1}{2}"$	2.2
H50P27	P1	$\frac{1}{2}-1\frac{3}{4}"$	5.72	5.384	27	4	.343	$2\frac{3}{16}"$	$1\frac{17}{16}"$	$1\frac{19}{32}"$	0	3	2.9
H50Q27	Q1	$\frac{3}{4}-2\frac{1}{16}"$	5.72	5.384	27	4	.343	$2\frac{25}{32}"$	$2\frac{1}{2}"$	$2\frac{7}{32}"$	0	$4\frac{1}{8}"$	3.8
H50H28	H	$\frac{3}{8}-1\frac{1}{2}"$	5.92	5.582	28	3	.343	$1\frac{1}{2}"$	$1\frac{1}{4}"$	$\frac{3}{32}"$	$\frac{1}{16}"$	$2\frac{1}{2}"$	2.5
H50P28	P1	$\frac{1}{2}-1\frac{3}{4}"$	5.92	5.582	28	4	.343	$2\frac{3}{16}"$	$1\frac{17}{16}"$	$1\frac{19}{32}"$	0	3	3.0
H50Q28	Q1	$\frac{3}{4}-2\frac{1}{16}"$	5.92	5.582	28	4	.343	$2\frac{25}{32}"$	$2\frac{1}{2}"$	$2\frac{7}{32}"$	0	$4\frac{1}{8}"$	4.0
H50P29	P1	$\frac{1}{2}-1\frac{3}{4}"$	6.12	5.781	29	4	.343	$2\frac{3}{16}"$	$1\frac{17}{16}"$	$1\frac{19}{32}"$	0	3	3.4
H50H30	Q1	$\frac{3}{8}-1\frac{1}{2}"$	6.32	5.979	30	3	.343	$1\frac{1}{2}"$	$1\frac{1}{4}"$	$\frac{3}{32}"$	$\frac{1}{16}"$	$2\frac{1}{2}"$	2.9
H50P30	P1	$\frac{1}{2}-1\frac{3}{4}"$	6.32	5.979	30	4	.343	$2\frac{3}{16}"$	$1\frac{17}{16}"$	$1\frac{19}{32}"$	0	3	3.6
H50Q30	Q1	$\frac{3}{4}-2\frac{1}{16}"$	6.32	5.979	30	4	.343	$2\frac{25}{32}"$	$2\frac{1}{2}"$	$2\frac{7}{32}"$	0	$4\frac{1}{8}"$	5.6
H50H32	H	$\frac{3}{8}-1\frac{1}{2}"$	6.72	6.376	32	3	.343	$1\frac{1}{2}"$	$1\frac{1}{4}"$	$\frac{3}{32}"$	$\frac{1}{16}"$	$2\frac{1}{2}"$	3.2
H50H33	H	$\frac{3}{8}-1\frac{1}{2}"$	6.92	6.575	33	3	.343	$1\frac{1}{2}"$	$1\frac{1}{4}"$	$\frac{3}{32}"$	$\frac{1}{16}"$	$2\frac{1}{2}"$	3.4
H50H34	H	$\frac{3}{8}-1\frac{1}{2}"$	7.12	6.774	34	3	.343	$1\frac{1}{2}"$	$1\frac{1}{4}"$	$\frac{3}{32}"$	$\frac{1}{16}"$	$2\frac{1}{2}"$	3.7
H50H35	H	$\frac{3}{8}-1\frac{1}{2}"$	7.32	6.972	35	3	.343	$1\frac{1}{2}"$	$1\frac{1}{4}"$	$\frac{3}{32}"$	$\frac{1}{16}"$	$2\frac{1}{2}"$	3.8
H50H36	H	$\frac{3}{8}-1\frac{1}{2}"$	7.52	7.171	36	3	.343	$1\frac{1}{2}"$	$1\frac{1}{4}"$	$\frac{3}{32}"$	$\frac{1}{16}"$	$2\frac{1}{2}"$	4.0
H50H38	H	$\frac{3}{8}-1\frac{1}{2}"$	7.92	7.569	38	3	.343	$1\frac{1}{2}"$	$1\frac{1}{4}"$	$\frac{3}{32}"$	$\frac{1}{16}"$	$2\frac{1}{2}"$	4.4
H50H40	H	$\frac{3}{8}-1\frac{1}{2}"$	8.32	7.966	40	3	.343	$1\frac{1}{2}"$	$1\frac{1}{4}"$	$\frac{3}{32}"$	$\frac{1}{16}"$	$2\frac{1}{2}"$	4.8



TYPE 3



TYPE 4

# Sprockets With Split Taper Bushings

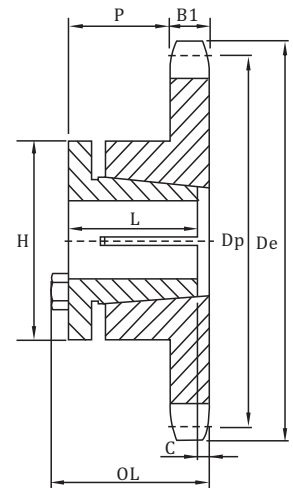
## American Standard Series

**No.50**

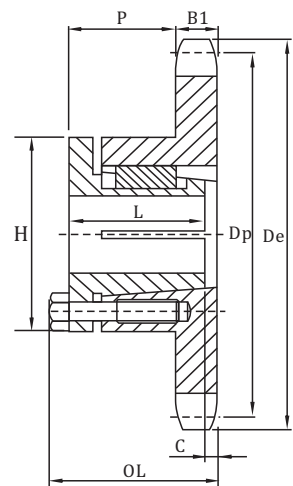
◇Pitch 5/8" ◇Roller Φ 0.404" ◇Tooth width B1 0.343"

### Single-Split Taper Bushed

Number	Bushing	Bore Range	De	Dp	No. Teeth	Type	B1	OL	L	P	C	H	Wt. Less (Bushing)
50G11	G	3/8 - 1"	2.50"	2.129"	11	3	.343"	1 <sup>19</sup> / <sub>32</sub>	1"	1 <sup>1</sup> / <sub>16</sub> "	3 <sup>3</sup> / <sub>32</sub> "	2"	.5
50G12	G	3/8 - 1"	2.70	2.415	12	3	.343	1 <sup>19</sup> / <sub>32</sub>	1	1 <sup>1</sup> / <sub>16</sub>	3 <sup>3</sup> / <sub>32</sub>	2	.5
50H13	H	3/8 - 1 1/2	2.91	2.612	13	3	.343	1 <sup>21</sup> / <sub>32</sub>	1 1/4	1 <sup>1</sup> / <sub>16</sub>	7 <sup>7</sup> / <sub>32</sub>	2 1/2	.6
50H14	H	3/8 - 1 1/2	3.11	2.809	14	3	.343	1 <sup>19</sup> / <sub>32</sub>	1 1/4	1 <sup>1</sup> / <sub>16</sub>	5 <sup>5</sup> / <sub>32</sub>	2 1/2	.6
50H15	H	3/8 - 1 1/2	3.32	3.006	15	3	.343	1 1/2	1 1/4	1 <sup>1</sup> / <sub>16</sub>	5 <sup>5</sup> / <sub>32</sub>	2 1/2	.8
50P15	P1	1/2 - 3/4	3.32	3.006	15	4	.343	2 <sup>3</sup> / <sub>16</sub>	1 <sup>5</sup> / <sub>16</sub>	1 <sup>19</sup> / <sub>32</sub>	0	3	1.1
50H16	H	3/8 - 1 1/2	3.52	3.204	16	3	.343	1 1/2	1 1/4	1 <sup>1</sup> / <sub>16</sub>	5 <sup>5</sup> / <sub>32</sub>	2 1/2	.9
50P16	P1	1/2 - 3/4	3.52	3.204	16	4	.343	2 <sup>3</sup> / <sub>16</sub>	1 <sup>5</sup> / <sub>16</sub>	1 <sup>19</sup> / <sub>32</sub>	0	3	1.3
50H17	H	3/8 - 1 1/2	3.72	3.401	17	3	.343	1 1/2	1 1/4	1 <sup>1</sup> / <sub>16</sub>	5 <sup>5</sup> / <sub>32</sub>	1/2	1.0
50P17	P1	1/2 - 3/4	3.72	3.401	17	4	.343	2 <sup>3</sup> / <sub>16</sub>	1 <sup>5</sup> / <sub>16</sub>	1 <sup>19</sup> / <sub>32</sub>	0	3	1.4
50H18	H	3/8 - 1 1/2	3.92	3.599	18	3	.343	1 1/2	1 1/4	1 <sup>1</sup> / <sub>16</sub>	5 <sup>5</sup> / <sub>32</sub>	2 1/2	1.0
50P18	P1	1/2 - 3/4	3.92	3.599	18	4	.343	2 <sup>3</sup> / <sub>16</sub>	1 <sup>5</sup> / <sub>16</sub>	1 <sup>19</sup> / <sub>32</sub>	0	3	1.6
50H19	H	3/8 - 1 1/2	4.12	3.797	19	3	.343	1 1/2	1 1/4	1 <sup>31</sup> / <sub>32</sub>	1/16	2 1/2	1.1
50P19	P1	1/2 - 3/4	4.12	3.797	19	4	.343	2 <sup>3</sup> / <sub>16</sub>	1 <sup>5</sup> / <sub>16</sub>	1 <sup>19</sup> / <sub>32</sub>	0	3	1.8
50H20	H	3/8 - 1 1/2	4.32	3.995	20	3	.343	1 1/2	1 1/4	1 <sup>31</sup> / <sub>32</sub>	1/16	2 1/2	1.5
50P20	P1	1/2 - 3/4	4.32	3.995	20	4	.343	2 <sup>3</sup> / <sub>16</sub>	1 <sup>5</sup> / <sub>16</sub>	1 <sup>19</sup> / <sub>32</sub>	0	3	2.0
50P21	P1	1/2 - 3/4	4.52	4.194	21	4	.343	2 <sup>3</sup> / <sub>16</sub>	1 <sup>5</sup> / <sub>16</sub>	1 <sup>19</sup> / <sub>32</sub>	0	3	2.1
50P22	P1	1/2 - 3/4	4.70	4.392	22	4	.343	2 <sup>3</sup> / <sub>16</sub>	1 <sup>5</sup> / <sub>16</sub>	1 <sup>19</sup> / <sub>32</sub>	0	3	2.3
50P23	P1	1/2 - 3/4	4.92	4.599	23	4	.343	2 <sup>3</sup> / <sub>16</sub>	1 <sup>5</sup> / <sub>16</sub>	1 <sup>19</sup> / <sub>32</sub>	0	3	2.4
50Q23	Q1	3/4 - 2 <sup>11</sup> / <sub>16</sub>	4.92	4.599	23	4	.343	2 <sup>25</sup> / <sub>32</sub>	2 1/2	2 <sup>5</sup> / <sub>32</sub>	0	4 1/8	3.4
50P24	P1	1/2 - 3/4	5.12	4.788	24	4	.343	2 <sup>3</sup> / <sub>16</sub>	1 <sup>5</sup> / <sub>16</sub>	1 <sup>19</sup> / <sub>32</sub>	0	3	2.5
50Q24	Q1	3/4 - 2 <sup>11</sup> / <sub>16</sub>	5.12	4.788	24	4	.343	2 <sup>25</sup> / <sub>32</sub>	2 1/2	2 <sup>5</sup> / <sub>32</sub>	0	4 1/8	3.4
50P25	P1	1/2 - 3/4	5.32	4.987	25	4	.343	2 <sup>3</sup> / <sub>16</sub>	1 <sup>5</sup> / <sub>16</sub>	1 <sup>19</sup> / <sub>32</sub>	0	3	2.6
50Q25	Q1	3/4 - 2 <sup>11</sup> / <sub>16</sub>	5.32	4.987	25	4	.343	2 <sup>25</sup> / <sub>32</sub>	2 1/2	2 <sup>5</sup> / <sub>32</sub>	0	4 1/8	3.7
50P26	P1	1/2 - 3/4	5.52	5.185	26	4	.343	2 <sup>3</sup> / <sub>16</sub>	1 <sup>5</sup> / <sub>16</sub>	1 <sup>19</sup> / <sub>32</sub>	0	3	2.9
50Q26	Q1	3/4 - 2 <sup>11</sup> / <sub>16</sub>	5.52	5.185	26	4	.343	2 <sup>25</sup> / <sub>32</sub>	2 1/2	2 <sup>5</sup> / <sub>32</sub>	0	4 1/8	3.8
50P27	P1	1/2 - 3/4	5.72	5.384	27	4	.343	2 <sup>3</sup> / <sub>16</sub>	1 <sup>5</sup> / <sub>16</sub>	1 <sup>19</sup> / <sub>32</sub>	0	3	3.0
50Q27	Q1	3/4 - 2 <sup>11</sup> / <sub>16</sub>	5.72	5.384	27	4	.343	2 <sup>25</sup> / <sub>32</sub>	2 1/2	2 <sup>5</sup> / <sub>32</sub>	0	4 1/8	3.9
50P28	P1	1/2 - 3/4	5.92	5.582	28	4	.343	2 <sup>3</sup> / <sub>16</sub>	1 <sup>5</sup> / <sub>16</sub>	1 <sup>19</sup> / <sub>32</sub>	0	3	3.2
50Q28	Q1	3/4 - 2 <sup>11</sup> / <sub>16</sub>	5.92	5.582	28	4	.343	2 <sup>25</sup> / <sub>32</sub>	2 1/2	2 <sup>5</sup> / <sub>32</sub>	0	4 1/8	4.0
50P29	P1	1/2 - 3/4	6.12	5.781	29	4	.343	2 <sup>3</sup> / <sub>16</sub>	1 <sup>5</sup> / <sub>16</sub>	1 <sup>19</sup> / <sub>32</sub>	0	3	3.3
50P30	P1	1/2 - 3/4	6.32	5.979	30	4	.343	2 <sup>3</sup> / <sub>16</sub>	1 <sup>5</sup> / <sub>16</sub>	1 <sup>19</sup> / <sub>32</sub>	0	3	3.5
50Q30	Q1	3/4 - 2 <sup>11</sup> / <sub>16</sub>	6.32	5.979	30	4	.343	2 <sup>25</sup> / <sub>32</sub>	2 1/2	2 <sup>5</sup> / <sub>32</sub>	0	4 1/8	5.6
50P31	P1	1/2 - 3/4	6.52	6.178	31	4	.343	2 <sup>3</sup> / <sub>16</sub>	1 <sup>5</sup> / <sub>16</sub>	1 <sup>19</sup> / <sub>32</sub>	0	3	3.6
50P32	P1	1/2 - 3/4	6.72	6.376	32	4	.343	2 <sup>3</sup> / <sub>16</sub>	1 <sup>5</sup> / <sub>16</sub>	1 <sup>19</sup> / <sub>32</sub>	0	3	3.9
50Q32	Q1	3/4 - 2 <sup>11</sup> / <sub>16</sub>	6.72	6.376	32	4	.343	2 <sup>25</sup> / <sub>32</sub>	2 1/2	2 <sup>5</sup> / <sub>32</sub>	0	4 1/8	6.1
50P33	P1	1/2 - 3/4	6.92	6.575	33	4	.343	2 <sup>3</sup> / <sub>16</sub>	1 <sup>5</sup> / <sub>16</sub>	1 <sup>19</sup> / <sub>32</sub>	0	3	4.1
50P34	P1	1/2 - 3/4	7.12	6.774	34	4	.343	2 <sup>3</sup> / <sub>16</sub>	1 <sup>5</sup> / <sub>16</sub>	1 <sup>19</sup> / <sub>32</sub>	0	3	4.3
50P35	P1	1/2 - 3/4	7.32	6.972	35	4	.343	2 <sup>3</sup> / <sub>16</sub>	1 <sup>5</sup> / <sub>16</sub>	1 <sup>19</sup> / <sub>32</sub>	0	3	4.3
50Q35	Q1	3/4 - 2 <sup>11</sup> / <sub>16</sub>	7.32	6.972	35	4	.343	2 <sup>25</sup> / <sub>32</sub>	2 1/2	2 <sup>5</sup> / <sub>32</sub>	0	4 1/8	6.8
50P36	P1	1/2 - 3/4	7.52	7.171	36	4	.343	2 <sup>3</sup> / <sub>16</sub>	1 <sup>5</sup> / <sub>16</sub>	1 <sup>19</sup> / <sub>32</sub>	0	3	4.8
50Q36	Q1	3/4 - 2 <sup>11</sup> / <sub>16</sub>	7.52	7.171	36	4	.343	2 <sup>25</sup> / <sub>32</sub>	2 1/2	2 <sup>5</sup> / <sub>32</sub>	0	4 1/8	6.8
50Q37	Q1	3/4 - 2 <sup>11</sup> / <sub>16</sub>	7.72	7.370	37	4	.343	2 <sup>25</sup> / <sub>32</sub>	2 1/2	2 <sup>5</sup> / <sub>32</sub>	0	4 1/8	7.0
50Q38	Q1	3/4 - 2 <sup>11</sup> / <sub>16</sub>	7.92	7.569	38	4	.343	2 <sup>25</sup> / <sub>32</sub>	2 1/2	2 <sup>5</sup> / <sub>32</sub>	0	4 1/8	7.4
50Q39	Q1	3/4 - 2 <sup>11</sup> / <sub>16</sub>	8.12	7.767	39	4	.343	2 <sup>25</sup> / <sub>32</sub>	2 1/2	2 <sup>5</sup> / <sub>32</sub>	0	4 1/8	7.6
50Q40	Q1	3/4 - 2 <sup>11</sup> / <sub>16</sub>	8.32	7.966	40	4	.343	2 <sup>25</sup> / <sub>32</sub>	2 1/2	2 <sup>5</sup> / <sub>32</sub>	0	4 1/8	8.0
50Q41	Q1	3/4 - 2 <sup>11</sup> / <sub>16</sub>	8.52	8.165	41	4	.343	2 <sup>25</sup> / <sub>32</sub>	2 1/2	2 <sup>5</sup> / <sub>32</sub>	0	4 1/8	8.2
50Q42	Q1	3/4 - 2 <sup>11</sup> / <sub>16</sub>	8.72	8.363	42	4	.343	2 <sup>25</sup> / <sub>32</sub>	2 1/2	2 <sup>5</sup> / <sub>32</sub>	0	4 1/8	8.3
50Q44	Q1	3/4 - 2 <sup>11</sup> / <sub>16</sub>	9.11	8.761	44	4	.343	2 <sup>25</sup> / <sub>32</sub>	2 1/2	2 <sup>5</sup> / <sub>32</sub>	0	4 1/8	8.6
50Q45	Q1	3/4 - 2 <sup>11</sup> / <sub>16</sub>	9.31	8.960	45	4	.343	2 <sup>25</sup> / <sub>32</sub>	2 1/2	2 <sup>5</sup> / <sub>32</sub>	0	4 1/8	9.0
50Q47	Q1	3/4 - 2 <sup>11</sup> / <sub>16</sub>	9.71	9.357	47	4	.343	2 <sup>25</sup> / <sub>32</sub>	2 1/2	2 <sup>5</sup> / <sub>32</sub>	0	4 1/8	9.3
50Q48	Q1	3/4 - 2 <sup>11</sup> / <sub>16</sub>	9.91	9.556	48	4	.343	2 <sup>25</sup> / <sub>32</sub>	2 1/2	2 <sup>5</sup> / <sub>32</sub>	0	4 1/8	9.6
50Q50	Q1	3/4 - 2 <sup>11</sup> / <sub>16</sub>	10.31	9.954	50	4	.343	2 <sup>25</sup> / <sub>32</sub>	2 1/2	2 <sup>5</sup> / <sub>32</sub>	0	4 1/8	9.8
50Q54	Q1	3/4 - 2 <sup>11</sup> / <sub>16</sub>	11.11	10.749	54	4	.343	2 <sup>25</sup> / <sub>32</sub>	2 1/2	2 <sup>5</sup> / <sub>32</sub>	0	4 1/8	11.3
50Q60	Q1	3/4 - 2 <sup>11</sup> / <sub>16</sub>	12.30	11.942	60	4	.343	2 <sup>25</sup> / <sub>32</sub>	2 1/2	2 <sup>5</sup> / <sub>32</sub>	0	4 1/8	13.3
50Q70	Q1	3/4 - 2 <sup>11</sup> / <sub>16</sub>	14.29	13.931	70	4	.343	2 <sup>25</sup> / <sub>32</sub>	2 1/2	2 <sup>5</sup> / <sub>32</sub>	0	4 1/8	16.9
50Q72	Q1	3/4 - 2 <sup>11</sup> / <sub>16</sub>	14.69	14.329	72	4	.343	2 <sup>25</sup> / <sub>32</sub>	2 1/2	2 <sup>5</sup> / <sub>32</sub>	0	4 1/8	18.1
50Q80	Q1	3/4 - 2 <sup>11</sup> / <sub>16</sub>	16.28	15.920	80	4	.343	2 <sup>25</sup> / <sub>32</sub>	2 1/2	2 <sup>5</sup> / <sub>32</sub>	0	4 1/8	21.1
50Q84	Q1	3/4 - 2 <sup>11</sup> / <sub>16</sub>	17.08	16.715	84	4	.343	2 <sup>25</sup> / <sub>32</sub>	2 1/2	2 <sup>5</sup> / <sub>32</sub>	0	4 1/8	24.3
50Q96	Q1	3/4 - 2 <sup>11</sup> / <sub>16</sub>	19.47	19.102	96	4	.343	2 <sup>25</sup> / <sub>32</sub>	2 1/2	2 <sup>5</sup> / <sub>32</sub>	0	4 1/8	29.8
50Q112	Q1	3/4 - 2 <sup>11</sup> / <sub>16</sub>	22.65	22.285	112	4	.343	2 <sup>25</sup> / <sub>32</sub>	2 1/2	2 <sup>5</sup> / <sub>32</sub>	0	4 1/8	39.3



**TYPE 3**



**TYPE 4**

# Sprockets With Split Taper Bushings American Standard Series

No.50-2  
No.50-3

◇ Pitch 5/8" ◇ Roller Φ 0.400"  
◇ Tooth width b1 0.332" ◇ Tooth width B2 1.045"

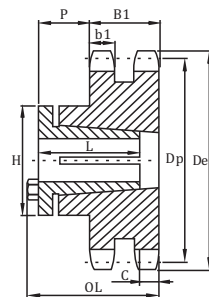
## Double-Split Taper Bushed

Number	Bushing	Bore Range	De	Dp	No. Teeth	Type	b1	B2	OL	L	P	C	H	Wt. Less (Bushing)
D50H14	H	3/8 - 1 1/2	3.11"	2.809"	14	11	.332"	1.045"	2 5/16"	1 1/4"	1 3/32"	7/8"	2 1/2"	1.2
D50P15	P1	1/2 - 1 3/4	3.32	3.006	15	16	.332	1.045	3 7/16	1 15/16	1 13/32	1 1/4	3	2.0
D50P16	P1	1/2 - 1 3/4	3.52	3.204	16	12	.332	1.045	2 15/16	1 15/16	1 13/32	1 1/2	3	1.6
D50P17	P1	1/2 - 1 3/4	3.72	3.401	17	12	.332	1.045	2 15/16	1 15/16	1 13/32	1 1/2	3	2.1
D50P18	P1	1/2 - 1 3/4	3.92	3.599	18	12	.332	1.045	2 15/16	1 15/16	1 13/32	1 1/2	3	2.5
D50P19	P1	1/2 - 1 3/4	4.12	3.797	19	12	.332	1.045	2 7/16	1 15/16	29/32	0	3	2.0
D50P20	P1	1/2 - 1 3/4	4.32	3.995	20	12	.332	1.045	2 7/16	1 15/16	29/32	0	3	2.5
D50P21	P1	1/2 - 1 3/4	4.52	4.194	21	12	.332	1.045	2 7/16	1 15/16	29/32	0	3	2.8
D50P22	P1	1/2 - 1 3/4	4.72	4.392	22	12	.332	1.045	2 7/16	1 15/16	29/32	0	3	3.2
D50P23	P1	1/2 - 1 3/4	4.92	4.590	23	12	.332	1.045	2 7/16	1 15/16	29/32	0	3	3.6
D50Q24	Q1	3/4 - 2 15/16	5.12	4.788	24	12	.332	1.045	2 1/2	2 1/2	1 15/32	0	4 1/8	4.0
D50Q25	Q1	3/4 - 2 15/16	5.32	4.987	25	12	.332	1.045	2 5/32	2 1/2	1 15/32	0	4 1/8	4.5
D50Q26	Q1	3/4 - 2 15/16	5.52	5.185	26	12	.332	1.045	2 5/32	2 1/2	1 15/32	0	4 1/8	5.3
D50Q27	Q1	3/4 - 2 15/16	5.72	5.384	27	12	.332	1.045	2 5/32	2 1/2	1 15/32	0	4 1/8	5.9
D50Q28	Q1	3/4 - 2 15/16	5.92	5.582	28	12	.332	1.045	2 5/32	2 1/2	1 15/32	0	4 1/8	6.3
D50Q30	Q1	3/4 - 2 15/16	6.32	5.979	30	12	.332	1.045	2 5/32	2 1/2	1 15/32	0	4 1/8	7.5
D50Q32	Q1	3/4 - 2 15/16	6.72	6.376	32	12	.332	1.045	2 5/32	2 1/2	1 15/32	0	4 1/8	8.5
D50Q35	Q1	3/4 - 2 15/16	7.32	6.972	35	12	.332	1.045	2 5/32	2 1/2	1 15/32	0	4 1/8	10.4
D50Q36	Q1	3/4 - 2 15/16	7.52	7.171	36	12	.332	1.045	2 5/32	2 1/2	1 15/32	0	4 1/8	11.0
D50Q40	Q1	3/4 - 2 15/16	8.32	7.966	40	12	.332	1.045	2 5/32	2 1/2	1 15/32	0	4 1/8	13.6
D50Q42	Q1	3/4 - 2 15/16	8.72	8.363	42	12	.332	1.045	2 5/32	2 1/2	1 15/32	0	4 1/8	15.0
D50Q45	Q1	3/4 - 2 15/16	9.31	8.960	45	12	.332	1.045	2 5/32	2 1/2	1 15/32	0	4 1/8	17.5
D50Q48	Q1	3/4 - 2 15/16	9.91	9.556	48	12	.332	1.045	2 5/32	2 1/2	1 15/32	0	4 1/8	20.4
D50Q52	Q1	3/4 - 2 15/16	10.71	10.351	52	12	.332	1.045	2 5/32	2 1/2	1 15/32	0	4 1/8	23.3
D50Q54	Q1	3/4 - 2 15/16	11.11	10.749	54	12	.332	1.045	2 5/32	2 1/2	1 15/32	0	4 1/8	23.3
D50Q60	Q1	3/4 - 2 15/16	12.30	11.942	60	12	.332	1.045	2 5/32	2 1/2	1 15/32	0	4 1/8	25.5
D50Q72	Q1	3/4 - 2 15/16	14.69	14.329	72	12	.332	1.045	2 5/32	2 1/2	1 15/32	0	4 1/8	43.1
D50Q76	Q1	3/4 - 2 15/16	15.49	15.124	76	12	.332	1.045	2 5/32	2 1/2	1 15/32	0	4 1/8	46.0
D50Q84	Q1	3/4 - 2 15/16	17.08	16.715	84	12	.332	1.045	2 5/32	2 1/2	1 15/32	0	5 7/8	56.7
D50R95	R1	1 1/8 - 3 3/4	19.27	18.903	95	12	.332	1.045	3 7/32	2 7/8	2 3/32	0	5 7/8	72.3
D50R96	R1	1 1/8 - 3 3/4	19.47	19.102	96	12	.332	1.045	3 7/32	2 7/8	2 3/32	0	5 7/8	80.7
D50R102	R1	1 1/8 - 3 3/4	20.66	20.295	102	12	.332	1.045	3 7/32	2 7/8	2 3/32	0	5 7/8	84.5
D50R112	R1	1 1/8 - 3 3/4	22.65	22.285	112	12	.332	1.045	3 7/32	2 7/8	2 3/32	0	5 7/8	93.2

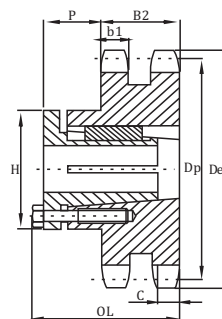
◇ Pitch 5/8" ◇ Roller Φ 0.400" ◇ Tooth width b1 0.332"  
◇ Tooth width B2 1.045" ◇ Tooth width B3 1.758"

## Triple-Split Taper Bushed

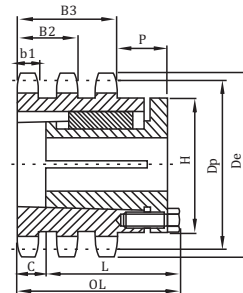
Number	Bushing	Bore Range	De	Dp	No. Teeth	Type	b1	B3	OL	L	P	C	H	Wt. Less (Bushing)
T50P15	P2	3/4 - 1 3/4	3.32"	3.006"	15	27	.332"	1.758"	4 1/8"	2 15/16"	1 3/8"	1 15/16"	3"	2.5
T50P16	P2	3/4 - 1 3/4	3.52	3.204	16	22	.332	1.758	3 7/8	2 15/16	1 7/8	7/16	3	2.4
T50P17	P2	3/4 - 1 3/4	3.72	3.401	17	22	.332	1.758	3 7/8	2 15/16	1 7/8	7/16	3	2.8
T50P18	P2	3/4 - 1 3/4	3.92	3.599	18	22	.332	1.758	3 7/8	2 15/16	1 7/8	7/16	3	3.4
T50P19	P1	1/2 - 1 3/4	4.12	3.797	19	24	.332	1.758	2 5/8	1 15/16	5/8	7/16	3	2.9
T50P20	P1	1/2 - 1 3/4	4.32	3.995	20	24	.332	1.758	2 5/8	1 15/16	5/8	7/16	3	3.1
T50P21	P1	1/2 - 1 3/4	4.52	4.194	21	24	.332	1.758	2 5/8	1 15/16	5/8	7/16	3	3.5
T50P23	P1	1/2 - 1 3/4	4.92	4.590	23	24	.332	1.758	2 5/8	1 15/16	5/8	7/16	3	4.5
T50Q24	Q1	3/4 - 2 15/16	5.12	4.788	24	23	.332	1.758	2 5/32	2 1/2	7/4	0	4 1/8	4.7
T50Q25	Q1	3/4 - 2 15/16	5.32	4.987	25	23	.332	1.758	2 5/32	2 1/2	7/4	0	4 1/8	5.0
T50Q26	Q1	3/4 - 2 15/16	5.52	5.185	26	23	.332	1.758	2 5/32	2 1/2	7/4	0	4 1/8	5.9
T50Q28	Q1	3/4 - 2 15/16	5.92	5.582	28	23	.332	1.758	2 5/32	2 1/2	7/4	0	4 1/8	7.3
T50Q30	Q1	3/4 - 2 15/16	6.32	5.979	30	23	.332	1.758	2 5/32	2 1/2	7/4	0	4 1/8	8.8
T50Q32	Q1	3/4 - 2 15/16	6.72	6.376	32	23	.332	1.758	2 5/32	2 1/2	7/4	0	4 1/8	10.9
T50Q35	Q1	3/4 - 2 15/16	7.32	6.972	35	23	.332	1.758	2 5/32	2 1/2	7/4	0	4 1/8	13.7
T50Q36	Q1	3/4 - 2 15/16	7.52	7.171	36	23	.332	1.758	2 5/32	2 1/2	7/4	0	4 1/8	14.6
T50Q40	Q1	3/4 - 2 15/16	8.32	7.966	40	23	.332	1.758	2 5/32	2 1/2	7/4	0	4 1/8	19.1
T50Q42	Q1	3/4 - 2 15/16	8.72	8.363	42	23	.332	1.758	2 5/32	2 1/2	7/4	0	4 1/8	21.5
T50Q48	Q1	3/4 - 2 15/16	9.91	9.556	48	23	.332	1.758	2 5/32	2 1/2	7/4	0	4 1/8	29.6
T50Q52	Q1	3/4 - 2 15/16	10.71	10.351	52	23	.332	1.758	2 5/32	2 1/2	7/4	0	4 1/8	36.4
T50R60	R1	1 1/8 - 3 3/4	12.30	11.942	60	22	.332	1.758	2 7/32	2 7/8	1 1/8	0	5 7/8	48.0
T50R68	R1	1 1/8 - 3 3/4	13.89	13.533	68	22	.332	1.758	2 7/32	2 7/8	1 1/8	0	5 7/8	63.5
T50R72	R1	1 1/8 - 3 3/4	14.69	14.329	72	22	.332	1.758	2 7/32	2 7/8	1 1/8	0	5 7/8	72.0
T50R76	R1	1 1/8 - 3 3/4	15.49	15.124	76	22	.332	1.758	2 7/32	2 7/8	1 1/8	0	5 7/8	81.0
T50R84	R1	1 1/8 - 3 3/4	17.08	16.715	84	22	.332	1.758	2 7/32	2 7/8	1 1/8	0	5 7/8	100.0
T50R95	R1	1 1/8 - 3 3/4	19.27	18.903	95	22	.332	1.758	2 7/32	2 7/8	1 1/8	0	5 7/8	130.0
T50R102	R1	1 1/8 - 3 3/4	20.66	20.295	102	22	.332	1.758	2 7/32	2 7/8	1 1/8	0	5 7/8	151.0



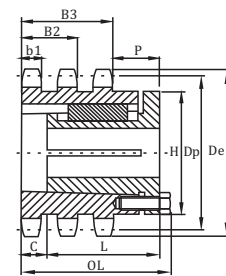
TYPE 11



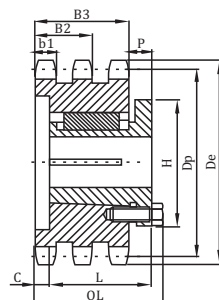
TYPE 12



TYPE 22



TYPE 23

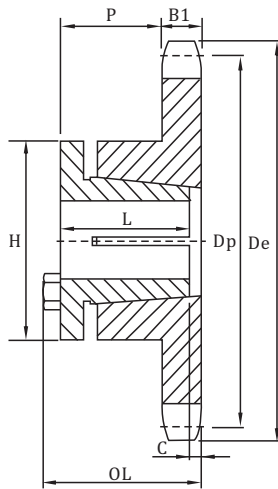


TYPE 24

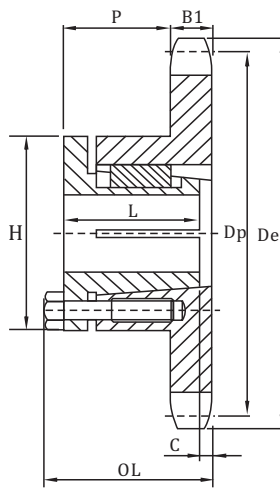
# Sprockets With Split Taper Bushings American Standard Series

No.60

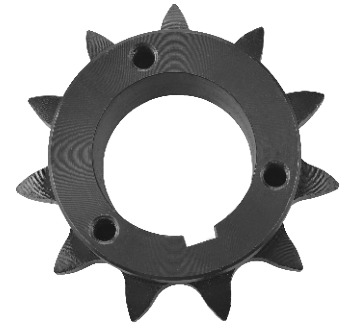
◇ Pitch 3/4"    ◇ Roller Φ 0.468"    ◇ Tooth width B1 0.459"



TYPE 3



TYPE 4



## Single-Split Taper Bushed

Number	Bushing	Bore Range	De	Dp	No. Teeth	Type	B1	OL	L	P	C	H	Wt. Less (Bushing)
H60G10	G	3/8 - 1"	2.76"	2.427"	10	3	.459"	1 3/4"	1"	1 3/32"	3/16"	2"	.6
H60H11	H	3/8 - 1 1/2	2.96	2.662	11	3	.459	1 13/16	1 1/4	1 5/32	3/8	2 1/2	.7
H60H12	H	3/8 - 1 1/2	3.25	2.898	12	3	.459	1 3/4	1 1/4	1 3/32	5/16	2 1/2	.8
H60H13	H	3/8 - 1 1/2	3.45	3.134	13	3	.459	1 1/2	1 1/4	27/32	1/16	2 1/2	.8
H60P13	P1	1/2 - 1 3/4	3.45	3.134	13	4	.459	2 3/16	1 5/16	1 15/32	0	3	1.2
H60H14	H	3/8 - 1 1/2	3.74	3.371	14	3	.459	1 1/2	1 1/4	27/32	1/16	2 1/2	1.1
H60P14	P1	1/2 - 1 3/4	3.74	3.371	14	4	.459	2 3/16	1 5/16	1 15/32	0	3	1.4
H60H15	H	3/8 - 1 1/2	3.98	3.607	15	3	.459	1 1/2	1 1/4	27/32	1/16	2 1/2	1.4
H60P15	P1	1/2 - 1 3/4	3.98	3.607	15	4	.459	2 3/16	1 5/16	1 15/32	0	3	1.7
H60H16	H	3/8 - 1 1/2	4.22	3.844	16	3	.459	1 1/2	1 1/4	27/32	1/16	2 1/2	1.3
H60P16	P1	1/2 - 1 3/4	4.22	3.844	16	4	.459	2 3/16	1 5/16	1 15/32	0	3	1.8
H60H17	H	3/8 - 1 1/2	4.46	4.082	17	3	.459	1 1/2	1 1/4	27/32	1/16	2 1/2	1.5
H60P17	P1	1/2 - 1 3/4	4.46	4.082	17	4	.459	2 3/16	1 5/16	1 15/32	0	3	2.1
H60H18	H	3/8 - 1 1/2	4.70	4.319	18	3	.459	1 1/2	1 1/4	27/32	1/16	2 1/2	1.7
H60P18	P1	1/2 - 1 3/4	4.70	4.319	18	4	.459	2 3/16	1 5/16	1 15/32	0	3	2.2
H60H19	H	3/8 - 1 1/2	4.95	4.557	19	3	.459	1 1/2	1 1/4	27/32	1/16	2 1/2	1.9
H60P19	P1	1/2 - 1 3/4	4.95	4.557	19	4	.459	2 3/16	1 5/16	1 15/32	0	3	2.5
H60H20	H	3/8 - 1 1/2	5.19	4.794	20	3	.459	1 1/2	1 1/4	27/32	1/16	2 1/2	2.1
H60P20	P1	1/2 - 1 3/4	5.19	4.794	20	4	.459	2 3/16	1 5/16	1 15/32	0	3	3.1
H60Q20	Q1	3/4 - 2 1/16	5.19	4.794	20	4	.459	2 25/32	2 1/2	2 1/32	0	4 1/8	3.5
H60P21	P1	1/2 - 1 3/4	5.43	5.032	21	4	.459	2 3/16	1 5/16	1 15/32	0	3	2.9
H60Q21	Q1	3/4 - 2 1/16	5.43	5.032	21	4	.459	2 25/32	2 1/2	2 1/32	0	4 1/8	3.6
H60H22	H	3/8 - 1 1/2	5.67	5.270	22	3	.459	1 1/2	1 1/4	27/32	1/16	2 1/2	3.6
H60P22	P1	1/2 - 1 3/4	5.67	5.270	22	4	.459	2 3/16	1 5/16	1 15/32	0	3	3.2
H60Q22	Q1	3/4 - 2 1/16	5.67	5.270	22	4	.459	2 25/32	2 1/2	2 1/32	0	4 1/8	4.0
H60P23	P1	1/2 - 1 3/4	5.91	5.508	23	4	.459	2 3/16	1 5/16	1 15/32	0	3	3.5
H60Q23	Q1	3/4 - 2 1/16	5.91	5.508	23	4	.459	2 25/32	2 1/2	2 1/32	0	4 1/8	4.1
H60H24	H	3/8 - 1 1/2	6.15	5.746	24	3	.459	1 1/2	1 1/4	27/32	1/16	2 1/2	3.0
H60P24	P1	1/2 - 1 3/4	6.15	5.746	24	4	.459	2 3/16	1 5/16	1 15/32	0	3	3.8
H60Q24	Q1	3/4 - 2 1/16	6.15	5.746	24	4	.459	2 25/32	2 1/2	2 1/32	0	4 1/8	4.5
H60P25	P1	1/2 - 1 3/4	6.39	5.984	25	4	.459	2 3/16	1 5/16	1 15/32	0	3	4.1
H60Q25	Q1	3/4 - 2 1/16	6.39	5.984	25	4	.459	2 25/32	2 1/2	2 1/32	0	4 1/8	5.9
H60P26	P1	1/2 - 1 3/4	6.63	6.222	26	4	.459	2 3/16	1 5/16	1 15/32	0	3	4.3
H60Q26	Q1	3/4 - 2 1/16	6.63	6.222	26	4	.459	2 25/32	2 1/2	2 1/32	0	4 1/8	6.3
H60P27	P1	1/2 - 1 3/4	6.87	6.460	27	4	.459	2 3/16	1 5/16	1 15/32	0	3	4.5
H60Q27	Q1	3/4 - 2 1/16	6.87	6.460	27	4	.459	2 25/32	2 1/2	2 1/32	0	4 1/8	6.4
H60P28	P1	1/2 - 1 3/4	7.11	6.699	28	4	.459	2 3/16	1 5/16	1 15/32	0	3	4.9
H60Q28	Q1	3/4 - 2 1/16	7.11	6.699	28	4	.459	2 25/32	2 1/2	2 1/32	0	4 1/8	6.9
H60Q29	Q1	3/4 - 2 1/16	7.35	6.937	29	4	.459	2 25/32	2 1/2	2 1/32	0	4 1/8	7.3
H60P30	P1	1/2 - 1 3/4	7.59	7.175	30	4	.459	2 3/16	1 5/16	1 15/32	0	3	5.6
H60Q30	Q1	3/4 - 2 1/16	7.59	7.175	30	4	.459	2 25/32	2 1/2	2 1/32	0	4 1/8	7.6



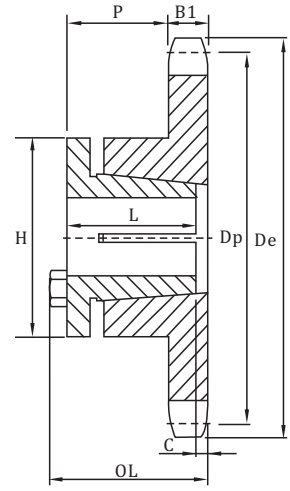
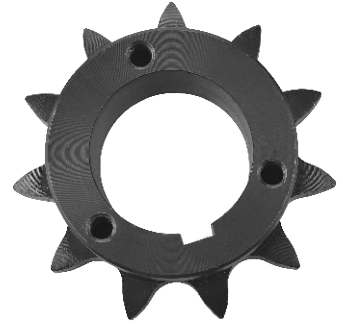
# Sprockets With Split Taper Bushings American Standard Series

No.60

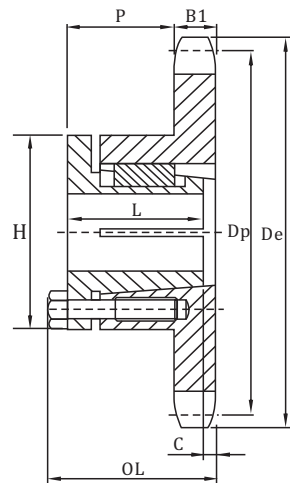
◇ Pitch 3/4"    ◇ Roller Φ 0.468"    ◇ Tooth width B1 0.459"

## Single-Split Taper Bushed

Number	Bushing	Bore Range	De	Dp	No. Teeth	Type	B1	OL	L	P	C	H	Wt. Less (Bushing)
60G10	G	3/8 - 1"	2.76"	2.427"	10	3	.459"	1 3/4"	1"	1 7/32"	7/16"	2"	.6
60H11	H	3/8 - 1 1/2	2.96	2.662	11	3	.459	1 13/16	1 1/4	1 7/32	3/8	2 1/2	.7
60H12	H	3/8 - 1 1/2	3.25	2.898	12	3	.459	1 3/4	1 1/4	1 7/32	5/16	2 1/2	.8
60H13	H	3/8 - 1 1/2	3.45	3.134	13	3	.459	1 1/2	1 1/4	2 7/32	1/16	2 1/2	.8
60P13	P1	1/2 - 1 3/4	3.45	3.134	13	4	.459	2 3/16	1 17/16	1 17/32	0	3	1.1
60H14	H	3/8 - 1 1/2	3.74	3.371	14	3	.459	1 1/2	1 1/4	2 7/32	1/16	2 1/2	1.0
60P14	P1	1/2 - 1 3/4	3.74	3.371	14	4	.459	2 3/16	1 17/16	1 17/32	0	3	1.2
60H15	H	3/8 - 1 1/2	3.98	3.607	15	3	.459	1 1/2	1 1/4	2 7/32	1/16	2 1/2	1.2
60P15	P1	1/2 - 1 3/4	3.98	3.607	15	4	.459	2 3/16	1 17/16	1 17/32	1	3	1.6
60P16	P1	1/2 - 1 3/4	4.22	3.844	16	4	.459	2 3/16	1 17/16	1 17/32	0	3	2.0
60P17	P1	1/2 - 1 3/4	4.46	4.082	17	4	.459	2 3/16	1 17/16	1 17/32	0	3	2.2
60P18	P1	1/2 - 1 3/4	4.70	4.319	18	4	.459	2 3/16	1 17/16	1 17/32	0	3	2.4
60P19	P1	1/2 - 1 3/4	4.95	4.557	19	4	.459	2 3/16	1 17/16	1 17/32	0	3	2.5
60P20	P1	1/2 - 1 3/4	5.19	4.794	20	4	.459	2 3/16	1 17/16	1 17/32	0	3	3.0
60Q20	Q1	3/4 - 2 1/16	5.19	4.794	20	4	.459	2 25/32	2 1/2	2 7/32	0	4 7/8	3.5
60P21	P1	1/2 - 1 3/4	5.43	5.032	21	4	.459	2 3/16	1 17/16	1 17/32	0	3	3.0
60Q21	Q1	3/4 - 2 1/16	5.43	5.032	21	4	.459	2 25/32	2 1/2	2 7/32	0	4 7/8	3.8
60P22	P1	1/2 - 1 3/4	5.67	5.270	22	4	.459	2 3/16	1 17/16	1 17/32	0	3	3.3
60Q22	Q1	3/4 - 2 1/16	5.67	5.270	22	4	.459	2 25/32	2 1/2	2 7/32	0	4 7/8	4.1
60P23	P1	1/2 - 1 3/4	5.91	5.508	23	4	.459	2 3/16	1 17/16	1 17/32	0	3	3.5
60Q23	Q1	3/4 - 2 1/16	5.91	5.508	23	4	.459	2 25/32	2 1/2	2 7/32	0	4 7/8	4.3
60P24	P1	1/2 - 1 3/4	6.15	5.746	24	4	.459	2 3/16	1 17/16	1 17/32	0	3	3.9
60Q24	Q1	3/4 - 2 1/16	6.15	5.746	24	4	.459	2 25/32	2 1/2	2 7/32	0	4 7/8	4.5
60P25	P1	1/2 - 1 3/4	6.39	5.984	25	4	.459	2 3/16	1 17/16	1 17/32	0	3	4.3
60Q25	Q1	3/4 - 2 1/16	6.39	5.984	25	4	.459	2 25/32	2 1/2	2 7/32	0	4 7/8	6.0
60P26	P1	1/2 - 1 3/4	6.63	6.222	26	4	.459	2 3/16	1 17/16	1 17/32	0	3	4.3
60Q26	Q1	3/4 - 2 1/16	6.63	6.222	26	4	.459	2 25/32	2 1/2	2 7/32	0	4 7/8	6.4
60P27	P1	1/2 - 1 3/4	6.87	6.460	27	4	.459	2 3/16	1 17/16	1 17/32	0	3	4.6
60Q27	Q1	3/4 - 2 1/16	6.87	6.460	27	4	.459	2 25/32	2 1/2	2 7/32	0	4 7/8	6.6
60P28	P1	1/2 - 1 3/4	7.11	6.699	28	4	.459	2 3/16	1 17/16	1 17/32	0	3	5.0
60Q28	Q1	3/4 - 2 1/16	7.11	6.699	28	4	.459	2 25/32	2 1/2	2 7/32	0	4 7/8	6.9
60Q29	Q1	3/4 - 2 1/16	7.35	6.937	29	4	.459	2 25/32	2 1/2	2 7/32	0	4 7/8	7.3
60P30	P1	1/2 - 1 3/4	7.59	7.175	30	4	.459	2 3/16	1 17/16	1 17/32	0	3	5.6
60Q30	Q1	3/4 - 2 1/16	7.59	7.175	30	4	.459	2 25/32	2 1/2	2 7/32	0	4 7/8	7.7
60Q31	Q1	3/4 - 2 1/16	7.83	7.413	31	4	.459	2 25/32	2 1/2	2 7/32	0	4 7/8	7.8
60Q32	Q1	3/4 - 2 1/16	8.07	7.652	32	4	.459	2 25/32	2 1/2	2 7/32	0	4 7/8	8.3
60Q33	Q1	3/4 - 2 1/16	8.30	7.890	33	4	.459	2 25/32	2 1/2	2 7/32	0	4 7/8	8.7
60Q34	Q1	3/4 - 2 1/16	8.54	8.129	34	4	.459	2 25/32	2 1/2	2 7/32	0	4 7/8	9.1
60Q35	Q1	3/4 - 2 1/16	8.78	8.367	35	4	.459	2 25/32	2 1/2	2 7/32	0	4 7/8	9.3
60Q36	Q1	3/4 - 2 1/16	9.02	8.605	36	4	.459	2 25/32	2 1/2	2 7/32	0	4 7/8	9.9
60Q37	Q1	3/4 - 2 1/16	9.26	8.844	37	4	.459	2 25/32	2 1/2	2 7/32	0	4 7/8	10.3
60Q38	Q1	3/4 - 2 1/16	9.50	9.082	38	4	.459	2 25/32	2 1/2	2 7/32	0	4 7/8	10.6
60Q39	Q1	3/4 - 2 1/16	9.74	9.321	39	4	.459	2 25/32	2 1/2	2 7/32	0	4 7/8	11.1
60Q40	Q1	3/4 - 2 1/16	9.98	9.559	40	4	.459	2 25/32	2 1/2	2 7/32	0	4 7/8	11.6
60Q41	Q1	3/4 - 2 1/16	10.22	9.798	41	4	.459	2 25/32	2 1/2	2 7/32	0	4 7/8	11.9
60Q42	Q1	3/4 - 2 1/16	10.46	10.036	42	4	.459	2 25/32	2 1/2	2 7/32	0	4 7/8	12.6
60Q44	Q1	3/4 - 2 1/16	10.94	10.513	44	4	.459	2 25/32	2 1/2	2 7/32	0	4 7/8	13.4
60Q45	Q1	3/4 - 2 1/16	11.18	10.752	45	4	.459	2 25/32	2 1/2	2 7/32	0	4 7/8	13.9
60Q47	Q1	3/4 - 2 1/16	11.65	11.229	47	4	.459	2 25/32	2 1/2	2 7/32	0	4 7/8	16.3
60Q48	Q1	3/4 - 2 1/16	11.89	11.467	48	4	.459	2 25/32	2 1/2	2 7/32	0	4 7/8	16.4
60Q50	Q1	3/4 - 2 1/16	12.37	11.945	50	4	.459	2 25/32	2 1/2	2 7/32	0	4 7/8	16.9
60Q54	Q1	3/4 - 2 1/16	13.33	12.899	54	4	.459	2 25/32	2 1/2	2 7/32	0	4 7/8	19.6
60Q56	Q1	3/4 - 2 1/16	13.81	13.376	56	4	.459	2 25/32	2 1/2	2 7/32	0	4 7/8	20.3
60Q60	Q1	3/4 - 2 1/16	14.73	14.331	60	4	.459	2 25/32	2 1/2	2 7/32	0	4 7/8	22.9
60Q70	Q1	3/4 - 2 1/16	17.12	16.717	70	4	.459	2 25/32	2 1/2	2 7/32	0	4 7/8	30.9
60R70	R1	1 1/8 - 3 3/4	17.12	16.717	70	4	.459	3 5/32	2 7/8	2 17/32	0	5 7/8	31.8
60Q72	Q1	3/4 - 2 1/16	17.63	17.194	72	4	.459	2 25/32	2 1/2	2 7/32	0	4 7/8	31.9
60R72	R1	1 1/8 - 3 3/4	17.63	17.194	72	4	.459	3 5/32	2 7/8	2 17/32	0	5 7/8	34.1
60Q80	Q1	3/4 - 2 1/16	19.54	19.103	80	4	.459	2 25/32	2 1/2	2 7/32	0	4 7/8	39.1
60R80	R1	1 1/8 - 3 3/4	19.54	19.103	80	4	.459	3 5/32	2 7/8	2 17/32	0	5 7/8	41.5
60Q84	Q1	1 3/4 - 2 1/16	20.49	20.058	84	4	.459	2 25/32	2 1/2	2 7/32	0	4 7/8	41.6
60R84	R1	1 1/8 - 3 3/4	20.49	20.058	84	4	.459	3 5/32	2 7/8	2 17/32	0	5 7/8	44.8
60Q96	Q1	1 3/4 - 2 1/16	23.36	22.922	96	4	.459	2 25/32	2 1/2	2 7/32	0	4 7/8	54.0
60R96	R1	1 1/8 - 3 3/4	23.36	22.922	96	4	.459	3 5/32	2 7/8	2 17/32	0	5 7/8	56.0
60Q112	Q1	1 3/4 - 2 1/16	27.18	26.742	112	4	.459	2 25/32	2 1/2	2 7/32	0	4 7/8	73.0
60R112	R1	1 1/8 - 3 3/4	27.18	26.742	112	4	.459	3 5/32	2 7/8	2 17/32	0	5 7/8	74.5



TYPE 3

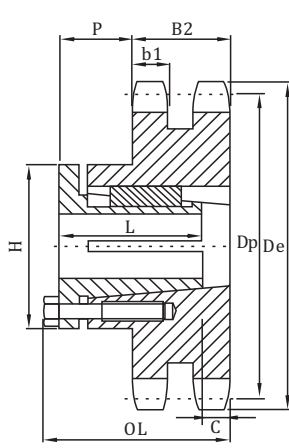


TYPE 4

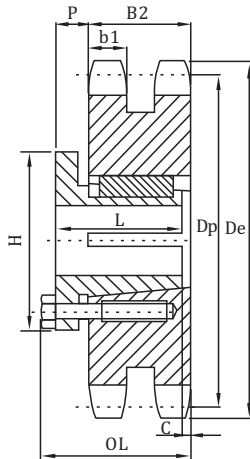
# Sprockets With Split Taper Bushings American Standard Series

No.60-2

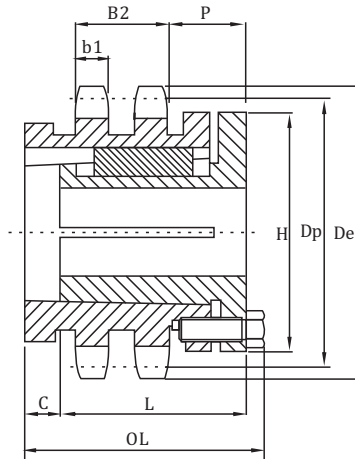
◇Pitch 3/4" ◇Roller Φ 0.468" ◇Tooth width b1 0.444" ◇Tooth width B2 1.341"



TYPE 12



TYPE 13



TYPE 16



## Double-Split Taper Bushed

Number	Bushing	Bore Range	De	Dp	No. Teeth	Type	b1	B2	OL	L	P	C	H	Wt Less (Bushing)
D60P13	P1	1/2 - 3/8"	3.45"	3.134"	13	16	.444"	1.341"	3 13/16"	1 15/16"	1 13/32"	1 5/8"	3"	2.5
D60P14	P1	1/2 - 3/4	3.74	3.371	14	12	.444	1.341	3	1 15/16	1 13/32	1 1/16	3	2.3
D60P15	P1	1/2 - 3/4	3.98	3.607	15	12	.444	1.341	3	1 15/16	1 13/32	1 1/16	3	2.7
D60P16	P1	1/2 - 3/4	4.22	3.844	16	13	.444	1.341	2 7/32	1 15/16	7/8	1/32	3	2.4
D60P17	P1	1/2 - 3/4	4.46	4.082	17	13	.444	1.341	2 7/32	1 15/16	7/8	1/32	3	2.8
D60P18	P1	1/2 - 3/4	4.70	4.319	18	13	.444	1.341	2 7/32	1 15/16	7/8	1/32	3	3.4
D60P19	P1	1/2 - 3/4	4.95	4.557	19	13	.444	1.341	2 7/32	1 15/16	7/8	1/32	3	4.0
D60P20	P1	1/2 - 3/4	5.19	4.794	20	13	.444	1.341	2 7/32	1 15/16	7/8	1/32	3	4.7
D60Q21	Q1	3/4 - 2 1/16	5.43	5.032	21	12	.444	1.341	2 25/32	2 1/2	1 5/32	0	4 7/8	4.8
D60Q22	Q1	3/4 - 2 1/16	5.67	5.270	22	12	.444	1.341	2 25/32	2 1/2	1 5/32	0	4 7/8	5.6
D60Q23	Q1	3/4 - 2 1/16	5.91	5.508	23	12	.444	1.341	2 25/32	2 1/2	1 5/32	0	4 7/8	6.3
D60Q24	Q1	3/4 - 2 1/16	6.15	5.746	24	12	.444	1.341	2 25/32	2 1/2	1 5/32	0	4 7/8	7.0
D60Q25	Q1	3/4 - 2 1/16	6.39	5.984	25	12	.444	1.341	2 25/32	2 1/2	1 5/32	0	4 7/8	7.9
D60Q26	Q1	3/4 - 2 1/16	6.63	6.222	26	12	.444	1.341	2 25/32	2 1/2	1 5/32	0	4 7/8	8.8
D60Q27	Q1	3/4 - 2 1/16	6.87	6.460	27	12	.444	1.341	2 25/32	2 1/2	1 5/32	0	4 7/8	9.2
D60Q28	Q1	3/4 - 2 1/16	7.11	6.699	28	12	.444	1.341	2 25/32	2 1/2	1 5/32	0	4 7/8	10.5
D60Q30	Q1	3/4 - 2 1/16	7.59	7.175	30	12	.444	1.341	2 25/32	2 1/2	1 5/32	0	4 7/8	12.3
D60Q32	Q1	3/4 - 2 1/16	8.07	7.652	32	12	.444	1.341	2 25/32	2 1/2	1 5/32	0	4 7/8	14.3
D60Q35	Q1	3/4 - 2 1/16	8.78	8.367	35	12	.444	1.341	2 25/32	2 1/2	1 5/32	0	4 7/8	17.7
D60Q36	Q1	3/4 - 2 1/16	9.02	8.605	36	12	.444	1.341	2 25/32	2 1/2	1 5/32	0	4 7/8	18.4
D60Q40	Q1	3/4 - 2 1/16	9.98	9.559	40	12	.444	1.341	2 25/32	2 1/2	1 5/32	0	4 7/8	23.9
D60Q42	Q1	3/4 - 2 1/16	10.46	10.036	42	12	.444	1.341	2 25/32	2 1/2	1 5/32	0	4 7/8	26.3
D60R42	R1	1 1/8 - 3 3/4	10.46	10.036	42	12	.444	1.341	3 7/32	2 7/8	1 17/32	0	5 7/8	25.7
D60R45	R1	1 1/8 - 3 3/4	11.18	10.752	45	12	.444	1.341	3 7/32	2 7/8	1 17/32	0	5 7/8	30.2
D60R48	R1	1 1/8 - 3 3/4	11.89	11.467	48	12	.444	1.341	3 7/32	2 7/8	1 17/32	0	5 7/8	35.1
D60R52	R1	1 1/8 - 3 3/4	12.85	12.422	52	12	.444	1.341	3 7/32	2 7/8	1 17/32	0	5 7/8	41.8
D60R54	R1	1 1/8 - 3 3/4	13.33	12.899	54	12	.444	1.341	3 7/32	2 7/8	1 17/32	0	5 7/8	45.1
D60R60	R1	1 1/8 - 3 3/4	14.76	14.331	60	12	.444	1.341	3 7/32	2 7/8	1 17/32	0	5 7/8	54.8
D60R68	R1	1 1/8 - 3 3/4	16.67	16.240	68	12	.444	1.341	3 7/32	2 7/8	1 17/32	0	5 7/8	73.8
D60R72	R1	1 1/8 - 3 3/4	17.63	17.194	72	12	.444	1.341	3 7/32	2 7/8	1 17/32	0	5 7/8	81.8
D60R76	R1	1 1/8 - 3 3/4	18.58	18.149	76	12	.444	1.341	3 7/32	2 7/8	1 17/32	0	5 7/8	93.0
D60R84	R1	1 1/8 - 3 3/4	20.49	20.058	84	12	.444	1.341	3 7/32	2 7/8	1 17/32	0	5 7/8	111.0
D60R95	R1	1 1/8 - 3 3/4	23.12	22.683	95	12	.444	1.341	3 7/32	2 7/8	1 17/32	0	5 7/8	148.0
D60R96	R1	1 1/8 - 3 3/4	23.36	22.922	96	12	.444	1.341	3 7/32	2 7/8	1 17/32	0	5 7/8	155.0

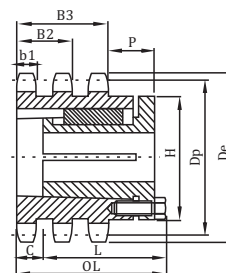
# Sprockets With Split Taper Bushings American Standard Series

No.60-3  
No.80

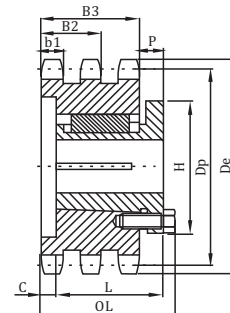
◇ Pitch  $3/4"$  ◇ Roller  $\Phi$   $0.468"$   
◇ Tooth width  $b_1$   $0.444"$  ◇ Tooth width  $B_2$   $1.341"$  ◇ Tooth width  $B_3$   $2.238"$

## Triple-Split Taper Bushed

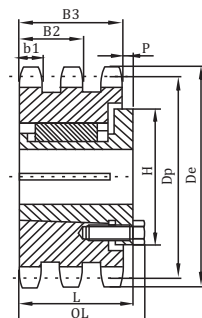
Number	Bushing	Bore Range	De	Dp	No. Teeth	Type	b1	B3	OL	L	P	C	H	Wt. Less (Bushing)
T60P13	P2	$3/4 - 1 1/4"$	3.45"	3.134"	13	27	.444"	2.238"	$4 23/32"$	$2 15/16"$	$1 13/32"$	$1 17/32"$	3"	3.3
T60P14	P2	$3/4 - 1 1/4"$	3.74	3.371	14	22	.444	2.238	$3 29/32"$	$2 15/16"$	$1 13/32"$	$1 23/32"$	3	3.3
T60P15	P2	$3/4 - 1 1/4"$	3.98	3.607	15	22	.444	2.238	$3 29/32"$	$2 15/16"$	$1 13/32"$	$1 23/32"$	3	4.0
T60P16	P1	$1/2 - 3/4"$	4.22	3.844	16	24	.444	2.238	$3 1/8"$	$1 15/16"$	$5/8"$	$15/16"$	3	3.4
T60Q17	Q1	$3/4 - 2 1/16"$	4.46	4.082	17	27	.444	2.238	5	$3 1/2"$	$1 21/32"$	$1 3/8"$	$4 1/8"$	4.6
T60Q18	Q1	$3/4 - 2 1/16"$	4.70	4.319	18	22	.444	2.238	$4 3/16"$	$3 1/2"$	$1 21/32"$	$1 3/8"$	$4 1/8"$	5.0
T60Q19	Q1	$3/4 - 2 1/16"$	4.95	4.557	19	22	.444	2.238	$4 3/16"$	$3 1/2"$	$1 21/32"$	$1 3/8"$	$4 1/8"$	5.9
T60Q20	Q1	$3/4 - 2 1/16"$	5.19	4.794	20	22	.444	2.238	$4 3/16"$	$3 1/2"$	$1 21/32"$	$1 3/8"$	$4 1/8"$	7.0
T60Q21	Q1	$3/4 - 2 1/16"$	5.43	5.032	21	24	.444	2.238	$3 1/4"$	$2 1/2"$	$3/4"$	$15/32"$	$4 1/8"$	5.7
T60Q22	Q1	$3/4 - 2 1/16"$	5.67	5.270	22	24	.444	2.238	$3 1/4"$	$2 1/2"$	$3/4"$	$15/32"$	$4 1/8"$	6.6
T60Q23	Q1	$3/4 - 2 1/16"$	5.91	5.508	23	25	.444	2.238	$2 25/32"$	$2 1/2"$	$1/4"$	0	$4 1/8"$	7.7
T60Q24	Q1	$3/4 - 2 1/16"$	6.15	5.746	24	25	.444	2.238	$2 25/32"$	$2 1/2"$	$1/4"$	0	$4 1/8"$	8.8
T60Q25	Q1	$3/4 - 2 1/16"$	6.39	5.984	25	25	.444	2.238	$2 25/32"$	$2 1/2"$	$1/4"$	0	$4 1/8"$	10.0
T60Q26	Q1	$3/4 - 2 1/16"$	6.63	6.222	26	25	.444	2.238	$2 25/32"$	$2 1/2"$	$1/4"$	0	$4 1/8"$	11.1
T60Q27	Q1	$3/4 - 2 1/16"$	6.87	6.460	27	25	.444	2.238	$2 25/32"$	$2 1/2"$	$1/4"$	0	$4 1/8"$	12.4
T60Q28	Q1	$3/4 - 2 1/16"$	7.11	6.699	28	25	.444	2.238	$2 25/32"$	$2 1/2"$	$1/4"$	0	$4 1/8"$	13.6
T60R30	R1	$1 1/8 - 3 3/4"$	7.59	7.175	30	25	.444	2.238	$3 5/32"$	$2 7/8"$	$5/8"$	0	$5 3/8"$	14.0
T60R32	R1	$1 1/8 - 3 3/4"$	8.07	7.652	32	25	.444	2.238	$3 5/32"$	$2 7/8"$	$5/8"$	0	$5 3/8"$	19.0
T60R35	R1	$1 1/8 - 3 3/4"$	8.78	8.367	35	25	.444	2.238	$3 5/32"$	$2 7/8"$	$5/8"$	0	$5 3/8"$	22.0
T60R36	R1	$1 1/8 - 3 3/4"$	9.02	8.605	36	25	.444	2.238	$3 5/32"$	$2 7/8"$	$5/8"$	0	$5 3/8"$	23.4
T60R40	R1	$1 1/8 - 3 3/4"$	9.98	9.559	40	25	.444	2.238	$3 5/32"$	$2 7/8"$	$5/8"$	0	$5 3/8"$	31.3
T60R42	R1	$1 1/8 - 3 3/4"$	10.46	10.036	42	25	.444	2.238	$3 5/32"$	$2 7/8"$	$5/8"$	0	$5 3/8"$	35.3
T60R52	R1	$1 1/8 - 3 3/4"$	12.85	12.422	52	25	.444	2.238	$3 5/32"$	$2 7/8"$	$5/8"$	0	$5 3/8"$	63.2
T60S68	S1	$1 1/16 - 4 1/4"$	16.67	16.240	68	22	.444	2.238	$5 1/8"$	$4 3/8"$	$2 3/16"$	0	$6 3/8"$	122.0



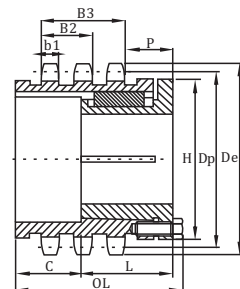
TYPE 22



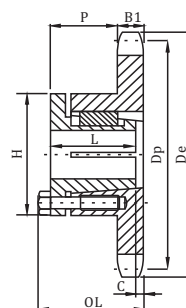
TYPE 24



TYPE 25



TYPE 27



TYPE 4

## No.80

◇ Pitch  $1"$  ◇ Roller  $\Phi$   $0.625"$  ◇ Tooth width  $B_1$   $0.575"$

## Single-Split Taper Bushed

Number	Bushing	Bore Range	De	Dp	No. Teeth	Type	B1	OL	L	P	C	H	Wt. Less (Bushing)
H80H11	H	$3/8 - 1 1/2"$	3.98"	3.550"	11	3	.575"	$1 1/2"$	$1 1/4"$	$1 3/4"$	$1/16"$	$2 1/2"$	1.3
H80P11	P1	$1/2 - 1 3/4"$	3.98	3.550	11	4	.575	$2 1/32"$	$1 15/16"$	$1 17/32"$	$5/32"$	3	1.6
H80P12	P1	$1/2 - 1 3/4"$	4.33	3.864	12	4	.575	$2 1/16"$	$1 15/16"$	$1 3/8"$	0	3	2.0
H80P13	P1	$1/2 - 1 3/4"$	4.66	4.179	13	4	.575	$2 3/16"$	$1 15/16"$	$1 3/8"$	0	3	2.4
H80P14	P1	$1/2 - 1 3/4"$	4.98	4.494	14	4	.575	$2 1/16"$	$1 15/16"$	$1 15/16"$	0	3	2.6
H80Q14	Q1	$3/4 - 2 1/16"$	4.98	4.494	14	4	.575	$2 25/32"$	$2 1/2"$	$1 3/8"$	0	$4 1/8"$	2.9
H80P15	P1	$1/2 - 1 3/4"$	5.31	4.810	15	4	.575	$2 1/16"$	$1 15/16"$	$1 15/16"$	0	3	3.0
H80Q15	Q1	$3/4 - 2 1/16"$	5.31	4.810	15	4	.575	$2 25/32"$	$2 1/2"$	$1 3/8"$	0	$4 1/8"$	3.4
H80P16	P1	$1/2 - 1 3/4"$	5.63	5.126	16	4	.575	$2 1/16"$	$1 15/16"$	$1 15/16"$	0	3	3.5
H80Q16	Q1	$3/4 - 2 1/16"$	5.63	5.126	16	4	.575	$2 25/32"$	$2 1/2"$	$1 3/8"$	0	$4 1/8"$	4.6
H80P17	P1	$1/2 - 1 3/4"$	5.95	5.442	17	4	.575	$2 1/16"$	$1 15/16"$	$1 15/16"$	0	3	3.8
H80Q17	Q1	$3/4 - 2 1/16"$	5.95	5.442	17	4	.575	$2 25/32"$	$2 1/2"$	$1 3/8"$	0	$4 1/8"$	5.3
H80P18	P1	$1/2 - 1 3/4"$	6.27	5.759	18	4	.575	$2 3/16"$	$1 15/16"$	$1 15/16"$	0	3	4.4
H80Q18	Q1	$3/4 - 2 1/16"$	6.27	5.759	18	4	.575	$2 25/32"$	$2 1/2"$	$1 3/8"$	0	$4 1/8"$	6.0
H80P19	P1	$1/2 - 1 3/4"$	6.59	6.076	19	4	.575	$2 3/16"$	$1 15/16"$	$1 15/16"$	0	3	4.9
H80Q19	Q1	$3/4 - 2 1/16"$	6.59	6.076	19	4	.575	$2 25/32"$	$2 1/2"$	$1 3/8"$	0	$4 1/8"$	6.5
H80Q20	Q1	$3/4 - 2 1/16"$	6.91	6.392	20	4	.575	$2 25/32"$	$2 1/2"$	$1 15/16"$	0	$4 1/8"$	7.0
H80Q21	Q1	$3/4 - 2 1/16"$	7.24	6.710	21	4	.575	$2 25/32"$	$2 1/2"$	$1 15/16"$	0	$4 1/8"$	7.3
H80Q22	Q1	$3/4 - 2 1/16"$	7.56	7.027	22	4	.575	$2 25/32"$	$2 1/2"$	$1 15/16"$	0	$4 1/8"$	8.2
H80Q23	Q1	$3/4 - 2 1/16"$	7.88	7.344	23	4	.575	$2 25/32"$	$2 1/2"$	$1 15/16"$	0	$4 1/8"$	8.8
H80Q24	Q1	$3/4 - 2 1/16"$	8.20	7.661	24	4	.575	$2 25/32"$	$2 1/2"$	$1 15/16"$	0	$4 1/8"$	9.1
H80Q25	Q1	$3/4 - 2 1/16"$	8.52	7.979	25	4	.575	$2 25/32"$	$2 1/2"$	$1 15/16"$	0	$4 1/8"$	9.6
H80Q26	Q1	$3/4 - 2 1/16"$	8.84	8.296	26	4	.575	$2 25/32"$	$2 1/2"$	$1 15/16"$	0	$4 1/8"$	10.6
H80Q27	Q1	$3/4 - 2 1/16"$	9.16	8.614	27	4	.575	$2 25/32"$	$2 1/2"$	$1 15/16"$	0	$4 1/8"$	10.9
H80Q28	Q1	$3/4 - 2 1/16"$	9.48	8.931	28	4	.575	$2 25/32"$	$2 1/2"$	$1 15/16"$	0	$4 1/8"$	12.4
H80Q29	Q1	$3/4 - 2 1/16"$	9.80	9.249	29	4	.575	$2 25/32"$	$2 1/2"$	$1 15/16"$	0	$4 1/8"$	12.6
H80Q30	Q1	$3/4 - 2 1/16"$	10.11	9.567	30	4	.575	$2 25/32"$	$2 1/2"$	$1 15/16"$	0	$4 1/8"$	13.4

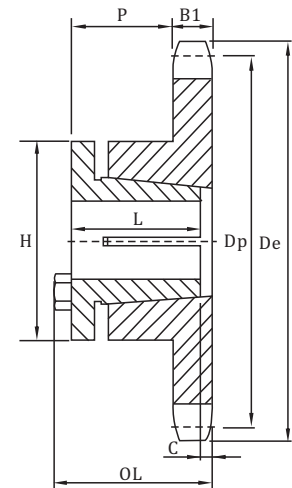
# Sprockets With Split Taper Bushings American Standard Series

## No.80

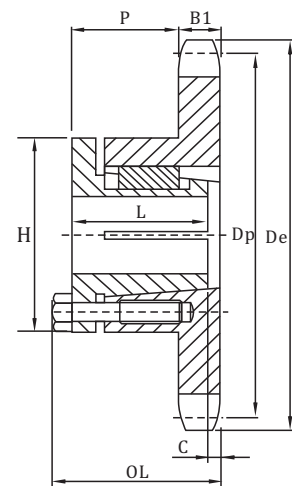
◇ Pitch 1"    ◇ Roller  $\Phi$     0.625"    ◇ Tooth width B1    0.575"

### Single-Split Taper Bushed

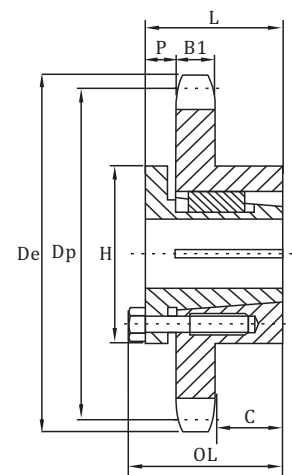
Number	Bushing	Bore Range	De	Dp	No. Teeth	Type	B1	OL	L	P	C	H	Wt. Less (Bushing)
80H10	H	$\frac{3}{8} - 1\frac{1}{2}$	3.68"	3.236"	10	3	.575"	2 $\frac{3}{32}$	1 $\frac{1}{4}$ "	1 $\frac{21}{64}$ "	$\frac{21}{32}$ "	2 $\frac{1}{2}$ "	2.0
80H11	H	$\frac{3}{8} - 1\frac{1}{2}$	3.98	3.550	11	3	.575	1 $\frac{1}{2}$	1 $\frac{1}{4}$	$\frac{3}{4}$	$\frac{1}{16}$	2 $\frac{1}{2}$	1.3
80P11	P1	$\frac{1}{2} - 1\frac{3}{4}$	3.98	3.550	11	4	.575	2 $\frac{11}{32}$	1 $\frac{15}{16}$	1 $\frac{17}{32}$	$\frac{5}{32}$	3	1.8
80P12	P1	$\frac{1}{2} - 1\frac{3}{4}$	4.33	3.864	12	4	.575	2 $\frac{7}{16}$	1 $\frac{15}{16}$	1 $\frac{15}{16}$	0	3	2.0
80P13	P1	$\frac{1}{2} - 1\frac{3}{4}$	4.66	4.179	13	4	.575	2 $\frac{7}{16}$	1 $\frac{15}{16}$	1 $\frac{3}{8}$	0	3	2.3
80P14	P1	$\frac{1}{2} - 1\frac{3}{4}$	4.98	4.494	14	4	.575	2 $\frac{7}{16}$	1 $\frac{15}{16}$	1 $\frac{3}{8}$	0	3	2.7
80Q14	Q1	$\frac{3}{4} - 2\frac{1}{16}$	4.98	4.494	14	4	.575	2 $\frac{25}{32}$	2 $\frac{1}{2}$	1 $\frac{15}{16}$	0	4 $\frac{1}{8}$	3.0
80P15	P1	$\frac{1}{2} - 1\frac{3}{4}$	5.31	4.810	15	4	.575	2 $\frac{7}{16}$	1 $\frac{15}{16}$	1 $\frac{3}{8}$	0	3	3.2
80Q15	Q1	$\frac{3}{4} - 2\frac{1}{16}$	5.31	4.810	15	4	.575	2 $\frac{25}{32}$	2 $\frac{1}{2}$	1 $\frac{15}{16}$	0	4 $\frac{1}{8}$	3.6
80P16	P1	$\frac{1}{2} - 1\frac{3}{4}$	5.63	5.126	16	4	.575	2 $\frac{7}{16}$	1 $\frac{15}{16}$	1 $\frac{3}{8}$	0	3	3.6
80Q16	Q1	$\frac{3}{4} - 2\frac{1}{16}$	5.63	5.126	16	4	.575	2 $\frac{25}{32}$	2 $\frac{1}{2}$	1 $\frac{15}{16}$	0	4 $\frac{1}{8}$	4.6
80P17	P1	$\frac{1}{2} - 1\frac{3}{4}$	5.95	5.442	17	4	.575	2 $\frac{7}{16}$	1 $\frac{15}{16}$	1 $\frac{3}{8}$	0	3	3.9
80Q17	Q1	$\frac{3}{4} - 2\frac{1}{16}$	5.95	5.442	17	4	.575	2 $\frac{25}{32}$	2 $\frac{1}{2}$	1 $\frac{15}{16}$	0	4 $\frac{1}{8}$	5.4
80P18	P1	$\frac{1}{2} - 1\frac{3}{4}$	6.27	5.759	18	4	.575	2 $\frac{7}{16}$	1 $\frac{15}{16}$	1 $\frac{3}{8}$	0	3	4.5
80Q18	Q1	$\frac{3}{4} - 2\frac{1}{16}$	6.27	5.759	18	4	.575	2 $\frac{25}{32}$	2 $\frac{1}{2}$	1 $\frac{15}{16}$	0	4 $\frac{1}{8}$	6.0
80P19	P1	$\frac{1}{2} - 1\frac{3}{4}$	6.59	6.079	19	4	.575	2 $\frac{7}{16}$	1 $\frac{15}{16}$	1 $\frac{3}{8}$	0	3	4.8
80Q19	Q1	$\frac{3}{4} - 2\frac{1}{16}$	6.59	6.079	19	4	.575	2 $\frac{25}{32}$	2 $\frac{1}{2}$	1 $\frac{15}{16}$	0	4 $\frac{1}{8}$	6.4
80Q20	Q1	$\frac{3}{2} - 2\frac{1}{16}$	6.91	6.392	20	4	.575	2 $\frac{25}{32}$	2 $\frac{1}{2}$	1 $\frac{15}{16}$	0	4 $\frac{1}{8}$	6.9
80Q21	Q1	$\frac{3}{4} - 2\frac{1}{16}$	7.24	6.710	21	4	.575	2 $\frac{25}{32}$	2 $\frac{1}{2}$	1 $\frac{15}{16}$	0	4 $\frac{1}{8}$	7.4
80Q22	Q1	$\frac{3}{2} - 2\frac{1}{16}$	7.56	7.027	22	4	.575	2 $\frac{25}{32}$	2 $\frac{1}{2}$	1 $\frac{15}{16}$	0	4 $\frac{1}{8}$	8.0
80Q23	Q1	$\frac{3}{4} - 2\frac{1}{16}$	7.88	7.344	23	4	.575	2 $\frac{25}{32}$	2 $\frac{1}{2}$	1 $\frac{15}{16}$	0	4 $\frac{1}{8}$	8.5
80Q24	Q1	$\frac{3}{2} - 2\frac{1}{16}$	8.20	7.661	24	4	.575	2 $\frac{25}{32}$	2 $\frac{1}{2}$	1 $\frac{15}{16}$	0	4 $\frac{1}{8}$	9.3
80Q25	Q1	$\frac{3}{4} - 2\frac{1}{16}$	8.52	7.979	25	4	.575	2 $\frac{25}{32}$	2 $\frac{1}{2}$	1 $\frac{15}{16}$	0	4 $\frac{1}{8}$	9.9
80Q26	Q1	$\frac{3}{2} - 2\frac{1}{16}$	8.84	8.296	26	4	.575	2 $\frac{25}{32}$	2 $\frac{1}{2}$	1 $\frac{15}{16}$	0	4 $\frac{1}{8}$	10.4
80Q27	Q1	$\frac{3}{2} - 2\frac{1}{16}$	9.16	8.614	27	4	.575	2 $\frac{25}{32}$	2 $\frac{1}{2}$	1 $\frac{15}{16}$	0	4 $\frac{1}{8}$	10.9
80Q28	Q1	$\frac{3}{4} - 2\frac{1}{16}$	9.48	8.931	28	4	.575	2 $\frac{25}{32}$	2 $\frac{1}{2}$	1 $\frac{15}{16}$	0	4 $\frac{1}{8}$	11.5
80Q29	Q1	$\frac{3}{4} - 2\frac{1}{16}$	9.80	9.567	29	4	.575	2 $\frac{25}{32}$	2 $\frac{1}{2}$	1 $\frac{15}{16}$	0	4 $\frac{1}{8}$	12.5
80Q30	Q1	$\frac{3}{4} - 2\frac{1}{16}$	10.11	9.567	30	4	.575	2 $\frac{25}{32}$	2 $\frac{1}{2}$	1 $\frac{15}{16}$	0	4 $\frac{1}{8}$	13.0
80Q31	Q1	$\frac{3}{4} - 2\frac{1}{16}$	10.43	9.885	31	4	.575	2 $\frac{25}{32}$	2 $\frac{1}{2}$	1 $\frac{15}{16}$	0	4 $\frac{1}{8}$	13.9
80Q32	Q1	$\frac{3}{4} - 2\frac{1}{16}$	10.75	10.202	32	4	.575	2 $\frac{25}{32}$	2 $\frac{1}{2}$	1 $\frac{15}{16}$	0	4 $\frac{1}{8}$	14.8
80Q33	Q1	$\frac{3}{4} - 2\frac{1}{16}$	11.07	10.520	33	4	.575	2 $\frac{25}{32}$	2 $\frac{1}{2}$	1 $\frac{15}{16}$	0	4 $\frac{1}{8}$	15.5
80Q34	Q1	$\frac{3}{4} - 2\frac{1}{16}$	11.39	10.838	34	4	.575	2 $\frac{25}{32}$	2 $\frac{1}{2}$	1 $\frac{15}{16}$	0	4 $\frac{1}{8}$	16.3
80Q35	Q1	$\frac{3}{4} - 2\frac{1}{16}$	11.71	11.156	35	4	.575	2 $\frac{25}{32}$	2 $\frac{1}{2}$	1 $\frac{15}{16}$	0	4 $\frac{1}{8}$	17.8
80Q36	Q1	$\frac{3}{4} - 2\frac{1}{16}$	11.98	11.474	36	4	.575	2 $\frac{25}{32}$	2 $\frac{1}{2}$	1 $\frac{15}{16}$	0	4 $\frac{1}{8}$	18.1
80R36	R1	$1\frac{1}{8} - 3\frac{3}{4}$	11.98	11.474	36	4	.575	3 $\frac{5}{32}$	2 $\frac{7}{8}$	2 $\frac{5}{16}$	0	5 $\frac{3}{8}$	19.5
80Q37	Q1	$\frac{3}{4} - 2\frac{1}{16}$	12.35	11.792	37	4	.575	2 $\frac{25}{32}$	2 $\frac{1}{2}$	1 $\frac{15}{16}$	0	4 $\frac{1}{8}$	18.5
80Q38	Q1	$\frac{3}{4} - 2\frac{1}{16}$	12.67	12.110	38	4	.575	2 $\frac{25}{32}$	2 $\frac{1}{2}$	1 $\frac{15}{16}$	0	4 $\frac{1}{8}$	20.0
80R39	R1	$1\frac{1}{8} - 3\frac{3}{4}$	12.99	12.428	39	4	.575	3 $\frac{5}{32}$	2 $\frac{7}{8}$	2 $\frac{5}{16}$	0	5 $\frac{3}{8}$	22.8
80Q40	Q1	$\frac{3}{4} - 2\frac{1}{16}$	13.31	12.746	40	4	.575	2 $\frac{25}{32}$	2 $\frac{1}{2}$	1 $\frac{15}{16}$	0	4 $\frac{1}{8}$	23.9
80R40	R1	$1\frac{1}{8} - 3\frac{3}{4}$	13.31	12.746	40	4	.575	3 $\frac{5}{32}$	2 $\frac{7}{8}$	2 $\frac{5}{16}$	0	5 $\frac{3}{8}$	23.4
80R41	R1	$1\frac{1}{8} - 3\frac{3}{4}$	13.63	13.064	41	4	.575	3 $\frac{5}{32}$	2 $\frac{7}{8}$	2 $\frac{5}{16}$	0	5 $\frac{3}{8}$	23.9
80Q42	Q1	$\frac{3}{4} - 2\frac{1}{16}$	13.94	13.382	42	4	.575	2 $\frac{25}{32}$	2 $\frac{1}{2}$	1 $\frac{15}{16}$	0	4 $\frac{1}{8}$	23.8
80R42	R1	$1\frac{1}{8} - 3\frac{3}{4}$	13.94	13.382	42	4	.575	3 $\frac{5}{32}$	2 $\frac{7}{8}$	2 $\frac{5}{16}$	0	5 $\frac{3}{8}$	25.4
80R44	R1	$1\frac{1}{8} - 3\frac{3}{4}$	14.58	14.018	44	4	.575	3 $\frac{5}{32}$	2 $\frac{7}{8}$	2 $\frac{5}{16}$	0	5 $\frac{3}{8}$	27.2
80Q45	Q1	$\frac{3}{4} - 2\frac{1}{16}$	14.90	14.336	45	4	.575	2 $\frac{25}{32}$	2 $\frac{1}{2}$	1 $\frac{15}{16}$	0	4 $\frac{1}{8}$	27.8
80R45	R1	$1\frac{1}{8} - 3\frac{3}{4}$	14.90	14.336	45	4	.575	3 $\frac{5}{32}$	2 $\frac{7}{8}$	2 $\frac{5}{16}$	0	5 $\frac{3}{8}$	28.5
80R47	R1	$1\frac{1}{8} - 3\frac{3}{4}$	15.54	14.972	47	4	.575	3 $\frac{5}{32}$	2 $\frac{7}{8}$	2 $\frac{5}{16}$	0	5 $\frac{3}{8}$	31.0
80Q48	Q1	$\frac{3}{4} - 2\frac{1}{16}$	15.86	15.290	48	4	.575	2 $\frac{25}{32}$	2 $\frac{1}{2}$	1 $\frac{15}{16}$	0	4 $\frac{1}{8}$	30.8
80R48	R1	$1\frac{1}{8} - 3\frac{3}{4}$	15.86	15.290	48	4	.575	3 $\frac{5}{32}$	2 $\frac{7}{8}$	2 $\frac{5}{16}$	0	5 $\frac{3}{8}$	32.3
80R50	R1	$1\frac{1}{8} - 3\frac{3}{4}$	16.50	15.926	50	4	.575	3 $\frac{5}{32}$	2 $\frac{7}{8}$	2 $\frac{5}{16}$	0	5 $\frac{3}{8}$	35.1
80Q54	Q1	$\frac{3}{4} - 2\frac{1}{16}$	17.77	17.198	54	4	.575	2 $\frac{25}{32}$	2 $\frac{1}{2}$	1 $\frac{15}{16}$	0	4 $\frac{1}{8}$	38.5
80R54	R1	$1\frac{1}{8} - 3\frac{3}{4}$	17.77	17.198	54	4	.575	3 $\frac{5}{32}$	2 $\frac{7}{8}$	2 $\frac{5}{16}$	0	5 $\frac{3}{8}$	40.8
80R56	R1	$1\frac{1}{8} - 3\frac{3}{4}$	18.41	17.835	56	4	.575	3 $\frac{5}{32}$	2 $\frac{7}{8}$	2 $\frac{5}{16}$	0	5 $\frac{3}{8}$	44.0
80Q60	Q1	$\frac{3}{4} - 2\frac{1}{16}$	19.68	19.107	60	4	.575	2 $\frac{25}{32}$	2 $\frac{1}{2}$	1 $\frac{15}{16}$	0	4 $\frac{1}{8}$	46.8
80R60	R1	$1\frac{1}{8} - 3\frac{3}{4}$	19.68	19.107	60	4	.575	3 $\frac{5}{32}$	2 $\frac{7}{8}$	2 $\frac{5}{16}$	0	5 $\frac{3}{8}$	47.3
80Q70	Q1	$\frac{3}{4} - 2\frac{1}{16}$	22.83	22.289	70	4	.575	2 $\frac{25}{32}$	2 $\frac{1}{2}$	2 $\frac{5}{16}$	0	4 $\frac{1}{8}$	60.0
80R70	R1	$1\frac{1}{8} - 3\frac{3}{4}$	22.83	22.289	70	4	.575	3 $\frac{5}{32}$	2 $\frac{7}{8}$	2 $\frac{5}{16}$	0	5 $\frac{3}{8}$	63.5
80Q72	Q1	$\frac{3}{4} - 2\frac{1}{16}$	23.46	22.926	72	4	.575	2 $\frac{25}{32}$	2 $\frac{1}{2}$	2 $\frac{5}{16}$	0	4 $\frac{1}{8}$	67.5
80R72	R1	$1\frac{1}{8} - 3\frac{3}{4}$	23.46	22.926	72	5	.575	3 $\frac{5}{32}$	2 $\frac{7}{8}$	$\frac{7}{8}$	$\frac{17}{16}$	5 $\frac{3}{8}$	69.4
80R80	R1	$1\frac{1}{8} - 3\frac{3}{4}$	26.01	25.471	80	5	.575	3 $\frac{5}{32}$	2 $\frac{7}{8}$	$\frac{7}{8}$	$\frac{17}{16}$	5 $\frac{3}{8}$	85.0
80R84	R1	$1\frac{1}{8} - 3\frac{3}{4}$	27.33	26.744	84	5	.575	3 $\frac{5}{32}$	2 $\frac{7}{8}$	$\frac{7}{8}$	$\frac{17}{16}$	5 $\frac{3}{8}$	90.0
80R96	R1	$1\frac{1}{8} - 3\frac{3}{4}$	31.15	30.563	96	5	.575	3 $\frac{5}{32}$	2 $\frac{7}{8}$	$\frac{7}{8}$	$\frac{17}{16}$	5 $\frac{3}{8}$	110.0
80S112	S1	$1\frac{1}{16} - 4\frac{1}{4}$	36.24	35.655	112	5	.575	4 $\frac{3}{4}$	4 $\frac{3}{8}$	1 $\frac{1}{8}$	2 $\frac{3}{4}$	6 $\frac{3}{8}$	165.0



TYPE 3



TYPE 4



TYPE 5

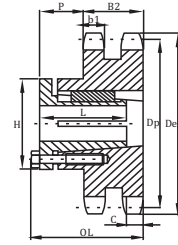
# Sprockets With Split Taper Bushings American Standard Series

No.80-2

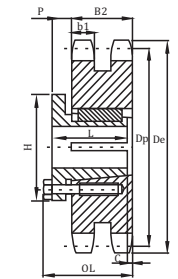
- ◇ Pitch 1"      ◇ Roller Φ 0.625"
- ◇ Tooth width b1 0.557"      ◇ Tooth width B2 1.710"

## Double-Split Taper Bushed

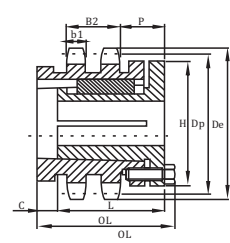
Number	Bushing	Bore Range	De	Dp	No. Teeth	Type	b1	B2	OL	L	P	C	H	Wt. Less (Bushing)
D80P13	P1	1/2 - 1 3/8"	4.66"	4.179"	13	13	.557"	1.710"	2 19/32"	1 11/16"	5/8"	1 13/32"	3"	3.6
D80Q14	Q2	1 - 2 3/8"	4.98	4.494	14	16	.557	1.710	4 5/8"	3 1/2"	1 3/4"	2 27/32"	4 1/8"	5.4
D80Q15	Q2	1 - 2 3/8"	5.31	4.810	15	12	.557	1.710	3 25/32"	3 1/2"	1 3/4"	-	4 1/8"	5.4
D80Q16	Q1	3/4 - 2 1/16"	5.63	5.126	16	13	.557	1.710	2 25/32"	2 1/2"	3/4"	-	4 1/8"	4.8
D80Q17	Q1	3/4 - 2 1/16"	5.95	5.442	17	13	.557	1.710	2 25/32"	2 1/2"	3/4"	-	4 1/8"	6.0
D80Q18	Q1	3/4 - 2 1/16"	6.27	5.759	18	13	.557	1.710	2 25/32"	2 1/2"	3/4"	-	4 1/8"	7.3
D80Q19	Q1	3/4 - 2 1/16"	6.59	6.076	19	13	.557	1.710	2 25/32"	2 1/2"	3/4"	-	4 1/8"	8.5
D80R20	R1	1 1/8 - 3 3/4"	6.91	6.392	20	12	.557	1.710	3 5/32"	2 7/8"	1 5/32"	-	5 3/8"	7.8
D80R21	R1	1 1/8 - 3 3/4"	7.24	6.710	21	12	.557	1.710	3 5/32"	2 7/8"	1 5/32"	-	5 3/8"	9.4
D80R22	R1	1 1/8 - 3 3/4"	7.56	7.027	22	12	.557	1.710	3 5/32"	2 7/8"	1 5/32"	-	5 3/8"	10.8
D80R23	R1	1 1/8 - 3 3/4"	7.88	7.344	23	12	.557	1.710	3 5/32"	2 7/8"	1 5/32"	-	5 3/8"	12.3
D80R24	R1	1 1/8 - 3 3/4"	8.20	7.661	24	12	.557	1.710	3 5/32"	2 7/8"	1 5/32"	-	5 3/8"	14.1
D80R25	R1	1 1/8 - 3 3/4"	8.52	7.976	25	12	.557	1.710	3 5/32"	2 7/8"	1 5/32"	-	5 3/8"	15.8
D80R26	R1	1 1/8 - 3 3/4"	8.84	8.296	26	12	.557	1.710	3 5/32"	2 7/8"	1 5/32"	-	5 3/8"	18.1
D80R27	R1	1 1/8 - 3 3/4"	9.16	8.614	27	12	.557	1.710	3 5/32"	2 7/8"	1 5/32"	-	5 3/8"	20.4
D80R28	R1	1 1/8 - 3 3/4"	9.48	8.931	28	12	.557	1.710	3 5/32"	2 7/8"	1 5/32"	-	5 3/8"	22.7
D80R30	R1	1 1/8 - 3 3/4"	10.11	9.567	30	12	.557	1.710	3 5/32"	2 7/8"	1 5/32"	-	5 3/8"	26.8
D80R36	R1	1 1/8 - 3 3/4"	12.03	11.474	36	12	.557	1.710	3 5/32"	2 7/8"	1 5/32"	-	5 3/8"	41.6
D80R42	R1	1 1/8 - 3 3/4"	13.94	13.382	42	12	.557	1.710	3 5/32"	2 7/8"	1 5/32"	-	5 3/8"	58.0
D80R45	R1	1 1/8 - 3 3/4"	14.90	14.336	45	12	.557	1.710	3 5/32"	2 7/8"	1 5/32"	-	5 3/8"	68.0
D80R48	R2	1 3/8 - 3 3/8"	15.86	15.290	48	15	.557	1.710	5 5/32"	4 7/8"	7/8"	2 29/32"	5 3/8"	86.0
D80R52	R2	1 3/8 - 3 3/8"	17.13	16.562	52	15	.557	1.710	5 5/32"	4 7/8"	7/8"	2 29/32"	5 3/8"	103.0
D80R54	R2	1 3/8 - 3 3/8"	17.77	17.198	54	15	.557	1.710	5 5/32"	4 7/8"	7/8"	2 29/32"	5 3/8"	111.0
D80R60	R2	1 3/8 - 3 3/8"	19.64	19.107	60	15	.557	1.710	5 5/32"	4 7/8"	7/8"	2 29/32"	5 3/8"	135.0
D80R68	R2	1 3/8 - 3 3/8"	22.23	21.653	68	15	.557	1.710	5 5/32"	4 7/8"	7/8"	2 29/32"	5 3/8"	176.0
D80R72	R2	1 3/8 - 3 3/8"	23.46	22.926	72	15	.557	1.710	5 5/32"	4 7/8"	7/8"	2 29/32"	5 3/8"	198.0
D80U76	U0	2 3/8 - 5 1/2"	24.74	24.198	76	15	.557	1.710	5 5/32"	5 1/4"	1 1/2"	2 1/32"	8 3/8"	219.0
D80U95	U0	2 3/8 - 5 1/2"	30.83	30.245	95	15	.557	1.710	5 5/32"	5 1/4"	1 1/2"	2 1/32"	8 3/8"	342.0



TYPE 12



TYPE 13

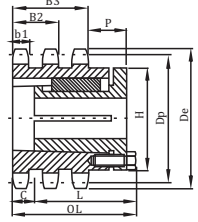


TYPE 16

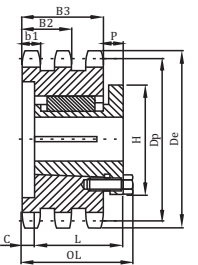
- ◇ Pitch 1"      ◇ Roller Φ 0.625"      ◇ Tooth width b1 0.557"
- ◇ Tooth width B2 1.710"      ◇ Tooth width B3 2.863"

## Single-Split Taper Bushed

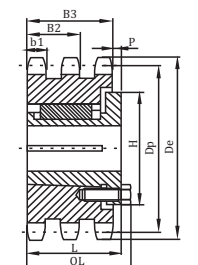
Number	Bushing	Bore Range	De	Dp	No. Teeth	Type	b1	B3	OL	L	P	C	H	Wt. Less (Bushing)
T80P13	P2	3/4 - 1 1/4"	4.66"	4.179"	13	24	.557"	2.863"	3 3/4"	2 11/16"	5/8"	9/16"	3"	5.7
T80Q14	Q2	1 - 2 3/8"	4.98	4.494	14	27	.557	2.863	5 25/32"	3 1/2"	1 3/4"	2	4 1/8"	7.5
T80Q15	Q2	1 - 2 3/8"	5.31	4.810	15	22	.557	2.863	4 27/32"	3 1/2"	1 3/4"	1 1/8"	4 1/8"	8.1
T80Q16	Q2	1 - 2 3/8"	5.63	5.126	16	25	.557	2.863	3 7/8"	3 1/2"	3/4"	3/32"	4 1/8"	9.3
T80Q17	Q2	1 - 2 3/8"	5.95	5.442	17	24	.557	2.863	3 27/32"	3 1/2"	3/4"	1/8"	4 1/8"	9.8
T80Q18	Q2	1 - 2 3/8"	6.27	5.759	18	24	.557	2.863	3 29/32"	3 1/2"	3/4"	1/8"	4 1/8"	12.0
T80Q19	Q2	1 - 2 3/8"	6.59	6.076	19	24	.557	2.863	3 29/32"	3 1/2"	3/4"	1/8"	4 1/8"	13.9
T80R20	R1	1 1/8 - 3 3/4"	6.91	6.392	20	24	.557	2.863	4 1/32"	2 7/8"	7/8"	7/8"	5 3/8"	10.2
T80R21	R1	1 1/8 - 3 3/4"	7.24	6.710	21	24	.557	2.863	4 1/32"	2 7/8"	7/8"	7/8"	5 3/8"	12.4
T80R22	R1	1 1/8 - 3 3/4"	7.56	7.027	22	24	.557	2.863	4 1/32"	2 7/8"	7/8"	7/8"	5 3/8"	14.6
T80R23	R1	1 1/8 - 3 3/4"	7.88	7.344	23	25	.557	2.863	3 5/32"	2 7/8"	0	0	5 3/8"	15.9
T80R24	R1	1 1/8 - 3 3/4"	8.20	7.661	24	25	.557	2.863	3 7/32"	2 7/8"	0	0	5 3/8"	18.5
T80R25	R1	1 1/8 - 3 3/4"	8.52	7.979	25	25	.557	2.863	3 5/32"	2 7/8"	0	0	5 3/8"	20.3
T80R26	R1	1 1/8 - 3 3/4"	8.84	8.296	26	25	.557	2.863	3 7/32"	2 7/8"	0	0	5 3/8"	23.4
T80R27	R1	1 1/8 - 3 3/4"	9.16	8.614	27	25	.557	2.863	3 5/32"	2 7/8"	0	0	5 3/8"	25.8
T80R28	R1	1 1/8 - 3 3/4"	9.48	8.931	28	25	.557	2.863	3 7/32"	2 7/8"	0	0	5 3/8"	28.1
T80R30	R1	1 1/8 - 3 3/4"	10.11	9.567	30	25	.557	2.863	3 5/32"	2 7/8"	0	0	5 3/8"	33.3
T80S36	S1	1 1/16 - 4 1/4"	12.03	11.474	36	22	.557	2.863	5 1/8"	4 3/8"	1 1/2"	0	6 3/8"	67.0
T80S42	S1	1 1/16 - 4 1/4"	13.94	13.382	42	22	.557	2.863	5 1/8"	4 3/8"	1 1/2"	0	6 3/8"	96.1
T80S45	S1	1 1/16 - 4 1/4"	14.90	14.336	45	22	.557	2.863	5 1/8"	4 3/8"	1 1/2"	0	6 3/8"	112
T80U52	U0	2 3/8 - 5 1/2"	17.13	16.562	52	22	.557	2.863	5 23/32"	5 1/4"	1 25/32"	0	8 3/8"	150
T80U60	U0	2 3/8 - 5 1/2"	19.68	19.107	60	22	.557	2.863	5 25/32"	5 1/4"	1 25/32"	0	8 3/8"	207
T80U68	U0	2 3/8 - 5 1/2"	22.23	21.653	68	22	.557	2.863	5 23/32"	5 1/4"	1 25/32"	0	8 3/8"	271
T80U76	U0	2 3/8 - 5 1/2"	24.78	24.198	76	22	.557	2.863	5 25/32"	5 1/4"	1 25/32"	0	8 3/8"	344
T80U95	U0	2 3/8 - 5 1/2"	30.83	30.245	95	25	.557	2.863	5 55/64"	5 1/4"	1 13/32"	1/32"	8 3/8"	183



TYPE 22



TYPE 24



TYPE 25

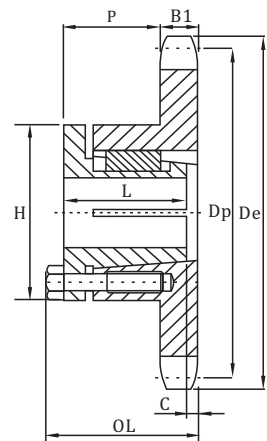
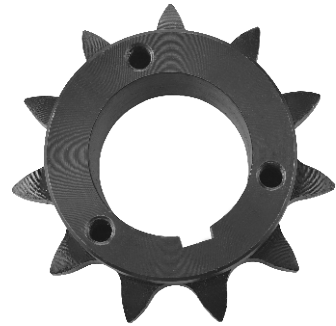
# Sprockets With Split Taper Bushings American Standard Series

No.100

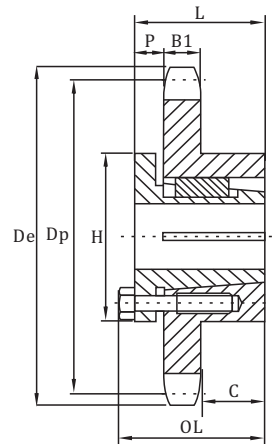
◇ Pitch 1 1/4"     ◇ Roller Φ     0.750"     ◇ Tooth width B1     0.692"

## Single-Split Taper Bushed

Number	Bushing	Bore Range	De	Dp	No. Teeth	Type	B1	OL	L	P	C	H	Wt. Less (Bushing)
H100P11	P1	1/2 - 1 3/4"	5.01"	4.437"	11	4	.692"	2 3/16"	1 15/16"	1 1/4"	0"	3"	2.8
H100Q12	Q1	3/4 - 2 1/16"	5.42	4.830	12	4	.692	2 27/32	2 1/2	1 7/8	1/16	4 1/8	3.5
H100Q13	Q1	3/4 - 2 1/16"	5.82	5.223	13	4	.692	2 27/32	2 1/2	1 7/8	1/16	4 1/8	4.3
H100Q14	Q1	3/4 - 2 1/16"	6.23	5.617	14	4	.692	2 25/32	2 1/2	1 13/16	0	4 1/8	5.6
H100Q15	Q1	3/4 - 2 1/16"	6.63	6.012	15	4	.692	2 25/32	2 1/2	1 13/16	0	4 1/8	6.6
H100Q16	Q1	3/4 - 2 1/16"	7.03	6.407	16	4	.692	2 25/32	2 1/2	1 13/16	0	4 1/8	7.4
H100Q17	Q1	3/4 - 2 1/16"	7.44	6.803	17	4	.692	2 25/32	2 1/2	1 13/16	0	4 1/8	8.2
H100Q18	Q1	3/4 - 2 1/16"	7.84	7.198	18	4	.692	2 25/32	2 1/2	1 13/16	0	4 1/8	9.0
H100Q19	Q1	3/4 - 2 1/16"	8.24	7.595	19	4	.692	2 25/32	2 1/2	1 13/16	0	4 1/8	9.8
H100Q20	Q1	3/4 - 2 1/16"	8.64	7.991	20	4	.692	2 25/32	2 1/2	1 13/16	0	4 1/8	10.9
H100Q21	Q1	3/4 - 2 1/16"	9.04	8.387	21	4	.692	2 25/32	2 1/2	1 13/16	0	4 1/8	11.8
H100Q22	Q1	3/4 - 2 1/16"	9.44	8.783	22	4	.692	2 25/32	2 1/2	1 13/16	0	4 1/8	12.6
H100Q23	Q1	3/4 - 2 1/16"	9.84	9.180	23	4	.692	2 25/32	2 1/2	1 13/16	0	4 1/8	13.8
H100Q24	Q1	3/4 - 2 1/16"	10.25	9.577	24	4	.692	2 25/32	2 1/2	1 13/16	0	4 1/8	15.4
H100R24	R1	1 1/8 - 3 3/4"	10.25	9.577	24	4	.692	3 5/32	2 7/8	2 3/16	0	5 3/8	15.6
H100Q25	Q1	3/4 - 2 1/16"	10.65	9.973	25	4	.692	2 25/32	2 1/2	1 13/16	0	4 1/8	16.0
H100Q26	Q1	3/4 - 2 1/16"	11.05	10.370	26	4	.692	2 25/32	2 1/2	1 13/16	0	4 1/8	17.3
H100R26	R1	1 1/8 - 3 3/4"	11.05	10.370	26	4	.692	3 5/32	2 7/8	2 3/16	0	5 3/8	17.9
H100R27	R1	1 1/8 - 3 3/4"	11.45	10.767	27	4	.692	3 5/32	2 7/8	2 3/16	0	5 3/8	18.0
H100Q28	Q1	3/4 - 2 1/16"	11.84	11.164	28	4	.692	2 25/32	2 1/2	1 13/16	0	4 1/8	19.6
H100Q30	Q1	3/4 - 2 1/16"	12.64	11.958	30	4	.692	2 25/32	2 1/2	1 13/16	0	4 1/8	22.4
100P11	P1	1/2 - 1 3/4"	5.01	4.437	11	4	.692	2 3/16"	1 15/16"	1 1/4"	0"	3"	3.0
100Q12	Q1	3/4 - 2 1/16"	5.42	4.830	12	4	.692	2 27/32	2 1/2	1 7/8	1/16	4 1/8	3.5
100Q13	Q1	3/4 - 2 1/16"	5.82	5.223	13	4	.692	2 27/32	2 1/2	1 7/8	1/16	4 1/8	4.3
100Q14	Q1	3/4 - 2 1/16"	6.23	5.617	14	4	.692	2 25/32	2 1/2	1 13/16	0	4 1/8	5.6
100Q15	Q1	3/4 - 2 1/16"	6.63	6.012	15	4	.692	2 25/32	2 1/2	1 13/16	0	4 1/8	6.5
100Q16	Q1	3/4 - 2 1/16"	7.03	6.407	16	4	.692	2 25/32	2 1/2	1 13/16	0	4 1/8	7.4
100Q17	Q1	3/4 - 2 1/16"	7.44	6.803	17	4	.692	2 25/32	2 1/2	1 13/16	0	4 1/8	8.2
100Q18	Q1	3/4 - 2 1/16"	7.84	7.198	18	4	.692	2 25/32	2 1/2	1 13/16	0	4 1/8	9.0
100Q19	Q1	3/4 - 2 1/16"	8.24	7.595	19	4	.692	2 25/32	2 1/2	1 13/16	0	4 1/8	9.9
100Q20	Q1	3/4 - 2 1/16"	8.64	7.991	20	4	.692	2 25/32	2 1/2	1 13/16	0	4 1/8	10.8
100Q21	Q1	3/4 - 2 1/16"	9.04	8.387	21	4	.692	2 25/32	2 1/2	1 13/16	0	4 1/8	11.7
100R21	R1	1 1/8 - 3 3/4"	9.04	8.387	21	4	.692	3 5/32	2 7/8	2 3/16	0	5 3/8	13.3
100Q22	Q1	3/4 - 2 1/16"	9.44	8.783	22	4	.692	2 25/32	2 1/2	1 13/16	0	4 1/8	12.5
100Q23	Q1	3/4 - 2 1/16"	9.84	9.180	23	4	.692	2 25/32	2 1/2	1 13/16	0	4 1/8	13.9
100Q24	Q1	3/4 - 2 1/16"	10.25	9.577	24	4	.692	2 25/32	2 1/2	1 13/16	0	4 1/8	15.5
100R24	R1	1 1/8 - 3 3/4"	10.25	9.577	24	4	.692	3 5/32	2 7/8	2 3/16	0	5 3/8	16.1
100Q25	Q1	3/4 - 2 1/16"	10.65	9.973	25	4	.692	2 25/32	2 1/2	1 13/16	0	4 1/8	16.2
100R25	R1	1 1/8 - 3 3/4"	10.65	9.973	25	4	.692	3 5/32	2 7/8	2 3/16	0	5 3/8	17.0
100Q26	Q1	3/4 - 2 1/16"	11.05	10.370	26	4	.692	2 25/32	2 1/2	1 13/16	0	4 1/8	17.9
100R26	R1	1 1/8 - 3 3/4"	11.05	10.370	26	4	.692	3 5/32	2 7/8	2 3/16	0	5 3/8	18.5
100Q27	Q1	3/4 - 2 1/16"	11.45	10.767	27	4	.692	2 25/32	2 1/2	1 13/16	0	4 1/8	18.2
100R27	R1	1 1/8 - 3 3/4"	11.45	10.767	27	4	.692	3 5/32	2 7/8	2 3/16	0	5 3/8	19.6
100Q28	Q1	3/4 - 2 1/16"	11.84	11.164	28	4	.692	2 25/32	2 1/2	1 13/16	0	4 1/8	19.9
100R28	R1	1 1/8 - 3 3/4"	11.84	11.164	28	4	.692	3 5/32	2 7/8	2 3/16	0	5 3/8	21.0
100Q30	Q1	3/4 - 2 1/16"	12.64	11.958	30	4	.692	2 25/32	2 1/2	1 13/16	0	4 1/8	22.6
100R30	R1	1 1/8 - 3 3/4"	12.64	11.958	30	4	.692	3 5/32	2 7/8	2 3/16	0	5 3/8	24.5
100R31	R1	1 1/8 - 3 3/4"	13.04	12.356	31	4	.692	3 5/32	2 7/8	2 3/16	0	5 3/8	25.8
100R32	Q1	3/4 - 2 1/16"	13.44	12.753	32	4	.692	2 25/32	2 1/2	1 13/16	0	4 1/8	25.3
100Q32	R1	1 1/8 - 3 3/4"	13.44	12.753	32	4	.692	3 5/32	2 7/8	2 3/16	0	5 3/8	26.5
100R35	Q1	3/4 - 2 1/16"	14.64	13.945	35	4	.692	2 25/32	2 1/2	1 13/16	0	4 1/8	30.2
100Q35	R1	1 1/8 - 3 3/4"	14.64	13.945	35	4	.692	3 5/32	2 7/8	2 3/16	0	5 3/8	29.8
100R36	R1	1 1/8 - 3 3/4"	15.04	14.342	36	4	.692	3 5/32	2 7/8	2 3/16	0	5 3/8	33.0
100R40	R1	1 1/8 - 3 3/4"	16.63	15.932	40	4	.692	3 5/32	2 7/8	2 3/16	0	5 3/8	40.9
100R42	R1	1 1/8 - 3 3/4"	17.43	16.727	42	4	.692	3 5/32	2 7/8	2 3/16	0	5 3/8	44.3
100R45	R1	1 1/8 - 3 3/4"	18.63	17.920	45	4	.692	3 5/32	2 7/8	2 3/16	0	5 3/8	50.5
100R48	R1	1 1/8 - 3 3/4"	19.82	19.112	48	4	.692	3 5/32	2 7/8	2 3/16	0	5 3/8	57.5
100R54	R1	1 1/8 - 3 3/4"	22.21	21.498	54	5	.692	3 5/32	2 7/8	7/8	1 5/16	5 3/8	69.0
100R60	R1	1 1/8 - 3 3/4"	24.55	23.884	60	5	.692	3 5/32	2 7/8	7/8	1 5/16	5 3/8	84.0
100R70	R1	1 1/8 - 3 3/4"	28.53	27.862	70	5	.692	3 5/32	2 7/8	7/8	1 5/16	5 3/8	104.0
100R72	R1	1 1/8 - 3 3/4"	29.33	28.657	72	5	.692	3 5/32	2 7/8	7/8	1 5/16	5 3/8	106.0
100R80	R1	1 1/8 - 3 3/4"	32.52	31.839	80	5	.692	3 5/32	2 7/8	7/8	1 5/16	5 3/8	135.0
100R84	R1	1 1/8 - 3 3/4"	34.11	33.430	84	5	.692	3 5/32	2 7/8	7/8	1 5/16	5 3/8	138.0



TYPE 4



TYPE 5

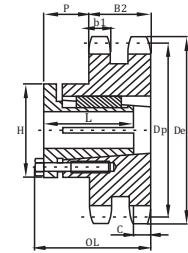
# Sprockets With Split Taper Bushings American Standard Series

No.100-2  
No.120

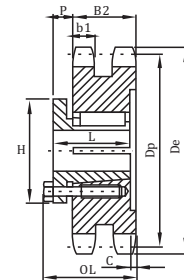
- ◇ Pitch 1 1/4"      ◇ Roller Φ 0.750"  
◇ Tooth width b1 0.669"      ◇ Tooth width B2 2.077"

## Double-Split Taper Bushed

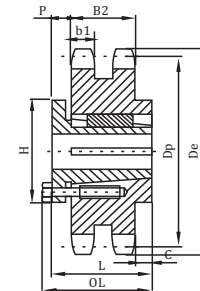
Number	Bushing	Bore Range	De	Dp	No. Teeth	Type	b1	B2	OL	L	P	C	H	Wt. Less (Bushing)
D100P11	P1	1/2 - 1 3/4"	5.01"	4.437"	11	14	.669"	2.077"	2 15/16"	1 15/16"	7/8"	3/4"	3"	4.7
D100Q12	Q2	1 - 2 5/8"	5.42	4.830	12	12	.669	2.077	4 7/32	3 1/2	1 59/64	7/16	4 1/8	5.9
D100Q13	Q2	1 - 2 5/8"	5.82	5.223	13	12	.669	2.077	4 7/32	3 1/2	1 59/64	7/16	4 1/8	7.9
D100Q14	Q1	3/4 - 2 1/16"	6.23	5.617	14	14	.669	2.077	3 7/32	2 1/2	7/4	7/16	4 1/8	7.4
D100Q15	Q1	3/4 - 2 1/16"	6.63	6.012	15	14	.669	2.077	3 7/32	2 1/2	7/4	7/16	4 1/8	9.1
D100Q16	Q1	3/4 - 2 1/16"	7.03	6.407	16	14	.669	2.077	3 7/32	2 1/2	7/4	7/16	4 1/8	10.9
D100R17	R1	1 1/8 - 3 3/4"	7.44	6.803	17	14	.669	2.077	3 7/32	2 7/8	7/8	1/16	5 1/8	10.0
D100R18	R1	1 1/8 - 3 3/4"	7.84	7.198	18	14	.669	2.077	3 7/32	2 7/8	7/8	1/16	5 3/8	12.3
D100R19	R1	1 1/8 - 3 3/4"	8.24	7.595	19	14	.669	2.077	3 7/32	2 7/8	7/8	1/16	5 3/8	14.9
D100R20	R1	1 1/8 - 3 3/4"	8.64	7.991	20	14	.669	2.077	3 7/32	2 7/8	7/8	1/16	5 3/8	17.4
D100R21	R1	1 1/8 - 3 3/4"	9.04	8.387	21	14	.669	2.077	3 7/32	2 7/8	7/8	1/16	5 3/8	20.3
D100R22	R1	1 1/8 - 3 3/4"	9.44	8.783	22	14	.669	2.077	3 7/32	2 7/8	7/8	1/16	5 3/8	22.8
D100R24	R1	1 1/8 - 3 3/4"	10.25	9.577	24	14	.669	2.077	3 7/32	2 7/8	7/8	1/16	5 3/8	29.5
D100R35	R1	1 1/8 - 3 3/4"	14.64	13.945	35	14	.669	2.077	3 7/32	2 7/8	7/8	1/16	5 3/8	76.8
D100S45	S1	1 1/16 - 4 1/4"	18.63	17.920	45	15	.669	2.077	4 3/4	4 3/4	1 1/16	1 15/64	6 3/8	138.0
D100S60	S1	1 1/16 - 4 1/4"	24.60	23.884	60	15	.669	2.077	4 3/4	4 3/4	1 1/16	1 15/64	6 3/8	251.0
D100S70	S1	1 1/16 - 4 1/4"	28.58	27.862	70	18	.669	2.077	7 1/8	6 7/8	2 7/16	2 1/4	6 3/8	358.0
D100S80	S1	1 1/16 - 4 1/4"	32.57	31.839	80	18	.669	2.077	7 1/8	6 7/16	2 7/16	2 1/4	6 3/8	431.0



TYPE 12



TYPE 14

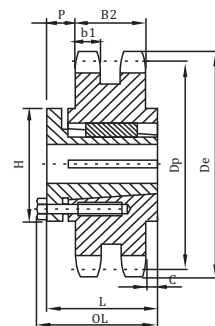


TYPE 15

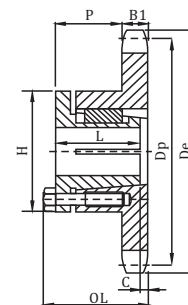
- ◇ Pitch 1 1/2"      ◇ Roller Φ 0.875"      ◇ Tooth width B2 0.924"

## Single-Split Taper Bushed

Number	Bushing	Bore Range	De	Dp	No. Teeth	Type	B1	OL	L	P	C	H	Wt. Less (Bushing)
H120Q11	Q1	3/4 - 2 1/16"	6.01"	5.324"	11	4	.924"	2 27/32"	2 1/2"	1 9/16"	0"	4 1/8"	4.8
H120Q12	Q1	3/4 - 2 1/16"	6.50	5.796	12	4	.924	2 27/32	2 1/2	1 7/16	0	4 1/8	6.3
H120Q13	Q1	3/4 - 2 1/16"	6.99	6.268	13	4	.924	2 27/32	2 1/2	1 7/16	0	4 1/8	7.9
H120Q14	Q1	3/4 - 2 1/16"	7.47	6.741	14	4	.924	2 27/32	2 1/2	1 7/16	0	4 1/8	9.2
H120Q15	Q1	3/4 - 2 1/16"	7.96	7.215	15	4	.924	2 27/32	2 1/2	1 7/16	0	4 1/8	10.4
H120R16	R1	1 1/8 - 3 3/4"	8.39	7.689	16	4	.924	3 7/32	2 7/8	1 15/16	0	5 7/8	12.0
H120R17	R1	1 1/8 - 3 3/4"	8.88	8.163	17	4	.924	3 7/32	2 7/8	1 15/16	0	5 7/8	13.7
H120R18	R1	1 1/8 - 3 3/4"	9.41	8.638	18	4	.924	3 7/32	2 7/8	1 15/16	0	5 7/8	15.0
H120R19	R1	1 1/8 - 3 3/4"	9.89	9.113	19	4	.924	3 7/32	2 7/8	1 15/16	0	5 7/8	16.9
H120R20	R1	1 1/8 - 3 3/4"	10.37	9.589	20	4	.924	3 7/32	2 7/8	1 15/16	0	5 7/8	18.8
H120R21	R1	1 1/8 - 3 3/4"	10.85	10.064	21	4	.924	3 7/32	2 7/8	1 15/16	0	5 7/8	20.7
H120R22	R1	1 1/8 - 3 3/4"	11.33	10.540	22	4	.924	3 7/32	2 7/8	1 15/16	0	5 7/8	22.5
H120R23	R1	1 1/8 - 3 3/4"	11.81	11.016	23	4	.924	3 7/32	2 7/8	1 15/16	0	5 7/8	24.3
H120R24	R1	1 1/8 - 3 3/4"	12.29	11.492	24	4	.924	3 7/32	2 7/8	1 15/16	0	5 7/8	27.1
H120R25	R1	1 1/8 - 3 3/4"	12.77	11.968	25	4	.924	3 7/32	2 7/8	1 15/16	0	5 7/8	29.1
H120R26	R1	1 1/8 - 3 3/4"	13.25	12.444	26	5	.924	3 7/32	2 7/8	7/8	1 1/16	5 7/8	33.3
H120R28	R1	1 1/8 - 3 3/4"	14.21	13.397	28	5	.924	3 7/32	2 7/8	7/8	1 1/16	5 7/8	38.0
H120R30	R1	1 1/8 - 3 3/4"	15.17	14.350	30	5	.924	3 7/32	2 7/8	7/8	1 1/16	5 7/8	43.3



TYPE 18



TYPE 4

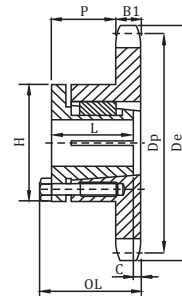
# Sprockets With Split Taper Bushings American Standard Series

## No.120 No.120-2

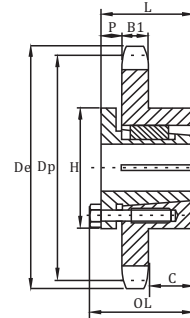
◇Pitch 1 1/2" ◇Roller Φ 0.875" ◇Tooth width B1 0.924"

### Single-Split Taper Bushed

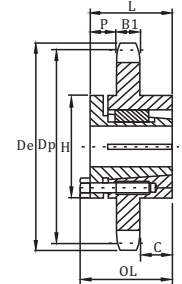
Number	Bushing	Bore Range	De	Dp	No. Teeth	Type	B1	OL	L	P	C	H	Wt. Less (Bushing)
120Q11	Q1	3/4 - 2 1/16"	6.01"	5.324"	11	4	.924"	2 27/32"	2 1/2"	1 9/16"	0"	4 1/8"	4.8
120Q12	Q1	3/4 - 2 1/16"	6.50	5.796	12	4	.924	2 27/32	2 1/2	1 9/16	0	4 1/8	6.3
120Q13	Q1	3/4 - 2 1/16"	6.99	6.268	13	4	.924	2 27/32	2 1/2	1 9/16	0	4 1/8	7.9
120Q14	Q1	3/4 - 2 1/16"	7.47	6.741	14	4	.924	2 27/32	2 1/2	1 9/16	0	4 1/8	9.1
120Q15	Q1	3/4 - 2 1/16"	7.96	7.215	15	4	.924	2 27/32	2 1/2	1 9/16	0	4 1/8	10.4
120Q16	Q1	3/4 - 2 1/16"	8.39	7.689	16	4	.924	2 27/32	2 1/2	1 9/16	0	4 1/8	11.8
120R16	R1	1 1/8 - 3 3/8"	8.39	7.689	16	4	.924	3 7/32	2 7/8	1 15/16	0	5 3/8	12.3
120Q17	Q1	3/4 - 2 1/16"	8.88	8.163	17	4	.924	2 27/32	2 1/2	1 9/16	0	4 1/8	13.4
120R17	R1	1 1/8 - 3 3/8"	8.88	8.163	17	4	.924	3 7/32	2 7/8	1 15/16	0	5 3/8	13.6
120Q18	Q1	3/4 - 2 1/16"	9.41	8.638	18	4	.924	2 27/32	2 1/2	1 9/16	0	4 1/8	15.6
120R18	R1	1 1/8 - 3 3/8"	9.41	8.638	18	4	.924	3 7/32	3 3/32	1 9/16	0	5 3/8	15.9
120R19	R1	1 1/8 - 3 3/8"	9.89	9.113	19	4	.924	3 7/32	3 7/32	1 9/16	0	5 3/8	16.8
120R20	R1	1 1/8 - 3 3/8"	10.37	9.589	20	4	.924	3 7/32	2 7/8	1 15/16	0	5 3/8	18.8
120R21	R1	1 1/8 - 3 3/8"	10.85	10.064	21	4	.924	3 7/32	2 7/8	1 15/16	0	5 3/8	21.0
120R22	R1	1 1/8 - 3 3/8"	11.33	10.540	22	4	.924	3 7/32	2 7/8	1 15/16	0	5 3/8	22.5
120R23	R1	1 1/8 - 3 3/8"	11.81	11.016	23	4	.924	3 7/32	2 7/8	1 15/16	0	5 3/8	24.8
120R24	R1	1 1/8 - 3 3/8"	12.29	11.492	24	4	.924	3 7/32	2 7/8	1 15/16	0	5 3/8	26.9
120R25	R1	1 1/8 - 3 3/8"	12.77	11.968	25	4	.924	3 7/32	2 7/8	1 15/16	0	5 3/8	29.8
120R26	R1	1 1/8 - 3 3/8"	13.25	12.444	26	5	.924	3 7/32	2 7/8	7/8	1 1/16	5 3/8	32.9
120R28	R1	1 1/8 - 3 3/8"	14.21	13.397	28	5	.924	3 7/32	2 7/8	7/8	1 1/16	5 3/8	38.3
120R30	R1	1 1/8 - 3 3/8"	15.17	14.350	30	5	.924	3 7/32	2 7/8	7/8	1 1/16	5 3/8	43.4
120R32	R1	1 1/8 - 3 3/8"	16.13	15.303	32	5	.924	3 7/32	2 7/8	7/8	1 1/16	5 3/8	49.4
120R35	R2	1 3/8 - 3 5/8"	17.57	16.734	35	6	.924	5 7/32	4 7/8	1 15/16	2	5 3/8	68.0
120R36	R2	1 3/8 - 3 5/8"	18.05	17.211	36	6	.924	5 7/32	4 7/8	1 15/16	2	5 3/8	72.0
120R40	R2	1 3/8 - 3 5/8"	19.96	19.118	40	6	.924	5 7/32	4 7/8	1 15/16	2	5 3/8	82.0
120S40	S1	1 1/16 - 4 1/4"	19.96	19.118	40	5	.924	4 3/4	4 3/8	1 1/16	2 3/8	6 3/8	83.0
120S42	S1	1 1/16 - 4 1/4"	20.92	20.072	42	5	.924	4 3/4	4 3/8	1 1/16	2 3/8	6 3/8	90.0
120R45	R2	1 3/8 - 3 5/8"	22.35	21.503	45	6	.924	5 7/32	4 7/8	1 15/16	2	5 3/8	102.0
120S45	S1	1 1/16 - 4 1/4"	22.35	21.503	45	5	.924	4 3/4	4 3/8	1 1/16	2 3/8	6 3/8	100.0
120S48	S1	1 1/16 - 4 1/4"	23.79	22.935	48	5	.924	4 3/4	4 3/8	1 1/16	2 3/8	6 3/8	111.0
120S54	S1	1 1/16 - 4 1/4"	26.65	25.798	54	5	.924	4 3/4	4 3/8	1 1/16	2 3/8	6 3/8	138.0
120R60	R2	1 3/8 - 3 5/8"	29.52	28.661	60	6	.924	5 7/32	4 7/8	1 15/16	2	5 3/8	179.0
120S60	S1	1 1/16 - 4 1/4"	29.52	28.661	60	5	.924	4 3/4	4 3/8	1 1/16	2 3/8	6 3/8	180.0
120R70	R2	1 3/8 - 3 5/8"	34.30	33.434	70	6	.924	5 7/32	4 7/8	1 15/16	2	5 3/8	148.0
120S70	S2	1 7/8 - 4 3/16"	34.30	33.434	70	5	.924	7 1/8	6 3/4	2 15/16	2 7/8	6 3/8	167.0
120R80	R2	1 3/8 - 3 5/8"	39.08	38.207	80	6	.924	5 7/32	4 7/8	1 15/16	2	5 3/8	291.0
120S80	S2	1 7/8 - 4 3/16"	39.08	38.207	80	6	.924	7 1/8	6 3/4	2 15/16	2 7/8	6 3/8	305.0



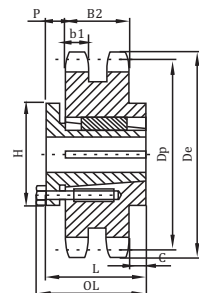
TYPE 4



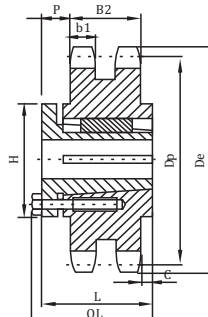
TYPE 5



TYPE 6



TYPE 15



TYPE 18

◇Pitch 1 1/2" ◇Roller Φ 0.875"  
◇Tooth width b1 0.894" ◇Tooth width B2 2.683"

### Double-Split Taper Bushed

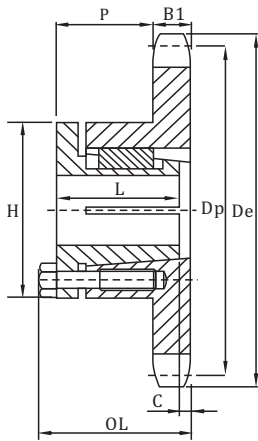
Number	Bushing	Bore Range	De	Dp	No. Teeth	Type	b1	B2	OL	L	P	C	H	Wt. Less (Bushing)
D120S30	S1	1 1/16 - 4 1/4"	15.17"	14.350"	30	15	.894"	2.683"	4 3/4"	4 3/8"	1 1/16"	5/8"	6 3/8"	105
D120S35	S1	1 1/16 - 4 1/4"	17.57	16.734	35	15	.894	2.683	4 3/4	4 3/8	1 1/16	5/8	6 3/8	148
D120S45	S2	1 7/8 - 4 3/16"	22.35	21.503	45	18	.894	2.683	7 1/8	6 3/4	2 7/32	1 27/32	6 3/8	268
D120S60	UO	2 3/8 - 5 1/2"	29.52	28.661	60	15	.894	2.683	5 23/32	5 1/4	1 9/32	1 1/32	8 3/8	183



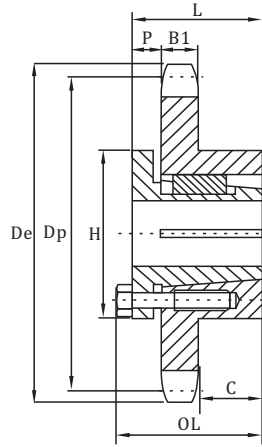
# Sprockets With Split Taper Bushings American Standard Series

No.140

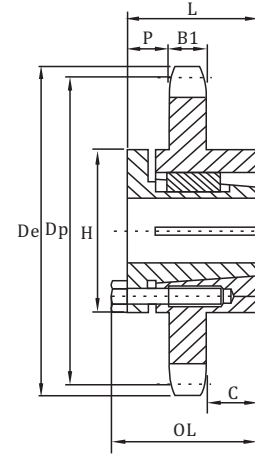
◇ Pitch 1 3/4"    ◇ Roller Φ    1.000"    ◇ Tooth width b1    0.924"



TYPE 4



TYPE 5



TYPE 6

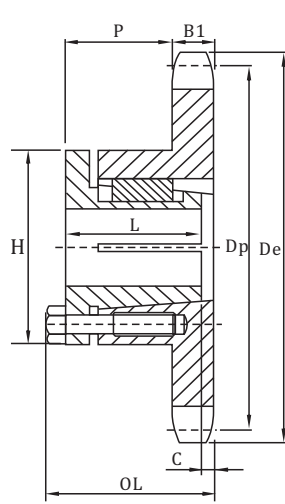
## Single-Split Taper Bushed

Number	Bushing	Bore Range	De	Dp	No. Teeth	Type	B1	OL	L	P	C	H	Wt. Less (Bushing)
H140Q11	Q1	3/4 - 2 1/16"	7.01"	6.212"	11	4	.924"	2 25/32"	2 1/2"	1 9/16"	0	4 1/8"	6.4
H140Q12	Q1	3/4 - 2 1/16"	7.58	6.762	12	4	.924	2 25/32	2 1/2	1 9/16	0	4 1/8	9.0
H140R13	R1	1 1/8 - 3 3/4	8.15	7.313	13	4	.924	3 5/32	2 7/8	1 15/16	0	5 3/8	11.1
H140R14	R1	1 1/8 - 3 3/4	8.72	7.864	14	4	.924	3 5/32	2 7/8	1 5/16	0	5 3/8	12.6
H140R15	R1	1 1/8 - 3 3/4	9.28	8.417	15	4	.924	3 5/32	2 7/8	1 15/16	0	5 3/8	14.7
H140R16	R1	1 1/8 - 3 3/4	9.85	8.970	16	4	.924	3 5/32	2 7/8	1 5/16	0	5 3/8	16.5
H140R17	R1	1 1/8 - 3 3/4	10.41	9.524	17	4	.924	3 5/32	2 7/8	1 15/16	0	5 3/8	18.5
H140R18	R1	1 1/8 - 3 3/4	10.97	10.078	18	4	.924	3 5/32	2 7/8	1 5/16	0	5 3/8	20.5
H140R19	R1	1 1/8 - 3 3/4	11.54	10.632	19	4	.924	3 5/32	2 7/8	1 15/16	0	5 3/8	23.0
H140R20	R1	1 1/8 - 3 3/4	12.10	11.187	20	4	.924	3 5/32	2 7/8	1 5/16	0	5 3/8	25.4
H140R21	R1	1 1/8 - 3 3/4	12.66	11.742	21	4	.924	3 5/32	2 7/8	1 5/16	0	5 3/8	27.8
H140R22	R1	1 1/8 - 3 3/4	13.22	12.297	22	5	.924	3 5/32	2 7/8	7/8	1 1/16	5 3/8	32.5
H140R23	R1	1 1/8 - 3 3/4	13.78	12.852	23	5	.924	3 5/32	2 7/8	7/8	1 1/16	5 3/8	36.0
H140R24	R1	1 1/8 - 3 3/4	14.34	13.407	24	5	.924	3 5/32	2 7/8	7/8	1 1/16	5 3/8	37.6
H140R25	R1	1 1/8 - 3 3/4	14.90	13.963	25	5	.924	3 5/32	2 7/8	7/8	1 1/16	5 3/8	40.3
H140R26	R1	1 1/8 - 3 3/4	15.46	14.513	26	5	.924	3 5/32	2 7/8	7/8	1 1/16	5 3/8	44.0
H140R30	R2	1 3/8 - 3 3/8	17.70	16.742	30	5	.924	5 5/32	4 7/8	7/8	2	5 3/8	68.0
140Q11	Q1	3/4 - 2 1/16"	7.01	6.212	11	4	.924	2 25/32	2 1/2	1 9/16	0	4 1/8	6.4
140Q12	Q1	3/4 - 2 1/16"	7.58	6.762	12	4	.924	2 25/32	2 1/2	1 9/16	0	4 1/8	9.0
140R13	R1	1 1/8 - 3 3/4	8.15	7.313	13	4	.924	3 5/32	2 7/8	1 15/16	0	5 3/8	11.1
140R14	R1	1 1/8 - 3 3/4	8.72	7.864	14	4	.924	3 5/32	2 7/8	1 5/16	0	5 3/8	12.6
140R15	R1	1 1/8 - 3 3/4	9.28	8.417	15	4	.924	3 5/32	2 7/8	1 15/16	0	5 3/8	14.7
140R16	R1	1 1/8 - 3 3/4	9.85	8.970	16	4	.924	3 5/32	2 7/8	1 5/16	0	5 3/8	16.5
140R17	R1	1 1/8 - 3 3/4	10.41	9.524	17	4	.924	3 5/32	2 7/8	1 15/16	0	5 3/8	18.5
140R18	R1	1 1/8 - 3 3/4	10.97	10.078	18	4	.924	3 5/32	2 7/8	1 5/16	0	5 3/8	20.5
140R19	R1	1 1/8 - 3 3/4	11.54	10.632	19	4	.924	3 5/32	2 7/8	1 15/16	0	5 3/8	23.0
140R20	R1	1 1/8 - 3 3/4	12.10	11.187	20	4	.924	3 5/32	2 7/8	1 5/16	0	5 3/8	25.4
140R21	R1	1 1/8 - 3 3/4	12.66	11.742	21	4	.924	3 5/32	2 7/8	1 5/16	0	5 3/8	27.8
140R22	R1	1 1/8 - 3 3/4	13.22	12.297	22	5	.924	3 5/32	2 7/8	7/8	1 1/16	5 3/8	32.5
140R23	R1	1 1/8 - 3 3/4	13.78	12.852	23	5	.924	3 5/32	2 7/8	7/8	1 1/16	5 3/8	36.0
140R24	R1	1 1/8 - 3 3/4	14.34	13.407	24	5	.924	3 5/32	2 7/8	7/8	1 1/16	5 3/8	37.6
140R25	R1	1 1/8 - 3 3/4	14.90	13.963	25	5	.924	3 5/32	2 7/8	7/8	1 1/16	5 3/8	40.3
140R26	R1	1 1/8 - 3 3/4	15.46	14.513	26	5	.924	3 5/32	2 7/8	7/8	1 1/16	5 3/8	44.0
140R30	R2	1 3/8 - 3 3/8	17.70	16.742	30	6	.924	5 5/32	4 7/8	7/8	2	5 3/8	68.0
140R35	R2	1 3/8 - 3 3/8	20.49	19.523	35	6	.924	5 5/32	4 7/8	7/8	2	5 3/8	88.0
140R36	R2	1 3/8 - 3 3/8	21.05	20.079	36	6	.924	5 5/32	4 7/8	7/8	2	5 3/8	90.0
140S36	S1	1 11/16 - 4 1/4	21.05	20.079	36	5	.924	4 3/4	4 3/8	1 1/16	2 3/8	6 3/8	89.0
140S40	R2	1 3/8 - 3 3/8	23.29	22.305	40	6	.924	5 5/32	4 7/8	7/8	2	5 3/8	109.0
140S40	S1	1 11/16 - 4 1/4	23.29	22.305	40	5	.924	4 3/4	4 3/8	1 1/16	2 3/8	6 3/8	107.0
140S45	S1	1 11/16 - 4 1/4	26.08	25.087	45	5	.924	4 3/4	4 3/8	1 1/16	2 3/8	6 3/8	132.0
140S48	S2	1 7/8 - 4 7/16	27.75	26.757	48	6	.924	7 1/2	6 3/4	2 15/16	2 7/8	6 3/8	169.0
140S54	S2	1 7/8 - 4 7/16	31.10	30.097	54	6	.924	7 1/2	6 3/4	2 15/16	2 7/8	6 3/8	208.0
140S60	S2	1 7/8 - 4 7/16	34.44	33.438	60	6	.924	7 1/2	6 3/4	2 15/16	2 7/8	6 3/8	230.0
140S70	S2	1 7/8 - 4 7/16	40.02	39.006	70	6	.924	7 1/2	6 3/4	2 15/16	2 7/8	6 3/8	311.0
140S80	S2	1 7/8 - 4 7/16	45.59	44.575	80	6	.924	7 1/2	6 3/4	2 15/16	2 7/8	6 3/8	342.0

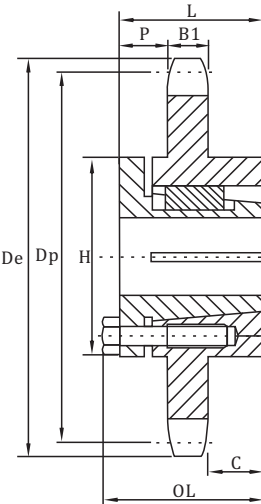
# Sprockets With Split Taper Bushings American Standard Series

No.160

◇Pitch 2" ◇Roller Φ 1.125" ◇Tooth width B1 1.156"



TYPE 4



TYPE 6

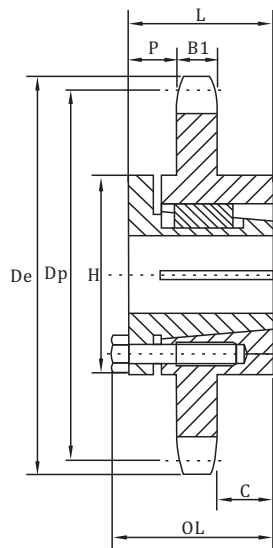
## Single-Split Taper Bushed

Number	Bushing	Bore Range	De	Dp	No. Teeth	Type	B1	OL	L	P	C	H	Wt. Less (Bushing)
H160R11	R1	1 1/8 - 3 3/4 "	8.01"	7.099"	11	4	1.156"	3 13/32 "	2 7/8 "	1 31/32 "	1/4	5 3/8 "	10.8
H160R12	R1	1 1/8 - 3 3/4 "	8.66	7.727	12	4	1.156	3 13/32	2 7/8	1 31/32	1/4	5 3/8	14.2
H160R13	R1	1 1/8 - 3 3/4 "	9.31	8.357	13	4	1.156	3 5/32	2 7/8	1 23/32	0	5 3/8	15.5
H160R14	R1	1 1/8 - 3 3/4 "	9.96	8.988	14	4	1.156	3 5/32	2 7/8	1 23/32	0	5 3/8	18.5
H160R15	R1	1 1/8 - 3 3/4 "	10.61	9.620	15	4	1.156	3 5/32	2 7/8	1 23/32	0	5 3/8	21.6
H160R16	R1	1 1/8 - 3 3/4 "	11.25	10.252	16	4	1.156	3 5/32	2 7/8	1 23/32	0	5 3/8	25.0
H160R17	R1	1 1/8 - 3 3/4 "	11.90	10.885	17	4	1.156	3 5/32	2 7/8	1 23/32	0	5 3/8	28.0
H160R18	R1	1 1/8 - 3 3/4 "	12.54	11.518	18	4	1.156	3 5/32	2 7/8	1 23/32	0	5 3/8	31.9
H160R19	R1	1 1/8 - 3 3/4 "	13.19	12.151	19	4	1.156	3 5/32	2 7/8	1 23/32	0	5 3/8	35.9
H160R20	R2	1 3/8 - 3 5/8 "	13.83	12.785	20	6	1.156	5 5/32	4 7/8	1 23/32	2	5 3/8	51.0
H160R21	R2	1 3/8 - 3 5/8 "	14.47	13.419	21	6	1.156	5 5/32	4 7/8	1 23/32	2	5 3/8	56.0
H160R22	R2	1 3/8 - 3 5/8 "	15.11	14.053	22	6	1.156	5 5/32	4 7/8	1 23/32	2	5 3/8	60.0
H160R23	R2	1 3/8 - 3 5/8 "	15.75	14.688	23	6	1.156	5 5/32	4 7/8	1 23/32	2	5 3/8	65.0
H160R24	R2	1 3/8 - 3 5/8 "	16.39	15.323	24	6	1.156	5 5/32	4 7/8	1 23/32	2	5 3/8	71.5
H160R25	R2	1 3/8 - 3 5/8 "	17.03	15.958	25	6	1.156	5 5/32	4 7/8	1 23/32	2	5 3/8	74.0
H160S26	S2	1 7/8 - 4 3/16 "	17.67	16.593	26	6	1.156	7 1/8	6 3/4	2 23/32	2 7/8	6 3/8	79.0
H160S28	S2	1 7/8 - 4 3/16 "	18.95	17.863	28	6	1.156	7 1/8	6 3/4	2 23/32	2 7/8	6 3/8	99.8
H160S30	S2	1 7/8 - 4 3/16 "	20.23	19.134	30	6	1.156	7 1/8	6 3/4	2 23/32	2 7/8	6 3/8	115
160R11	R1	1 1/8 - 3 3/4 "	8.01"	7.099"	11	4	1.156	3 13/32 "	2 7/8 "	1 31/32 "	1/4	5 3/8 "	10.8
160R12	R1	1 1/8 - 3 3/4 "	8.66	7.727	12	4	1.156	3 13/32	2 7/8	1 31/32	1/4	5 3/8	14.2
160R13	R1	1 1/8 - 3 3/4 "	9.31	8.357	13	4	1.156	3 5/32	2 7/8	1 23/32	0	5 3/8	15.5
160R14	R1	1 1/8 - 3 3/4 "	9.96	8.988	14	4	1.156	3 5/32	2 7/8	1 23/32	0	5 3/8	18.5
160R15	R1	1 1/8 - 3 3/4 "	10.61	9.620	15	4	1.156	3 5/32	2 7/8	1 23/32	0	5 3/8	21.6
160R16	R1	1 1/8 - 3 3/4 "	11.25	10.252	16	4	1.156	3 5/32	2 7/8	1 23/32	0	5 3/8	25.0
160R17	R1	1 1/8 - 3 3/4 "	11.90	10.885	17	4	1.156	3 5/32	2 7/8	1 23/32	0	5 3/8	28.0
160R18	R1	1 1/8 - 3 3/4 "	12.54	11.518	18	4	1.156	3 5/32	2 7/8	1 23/32	0	5 3/8	31.9
160R19	R1	1 1/8 - 3 3/4 "	13.19	12.151	19	4	1.156	3 5/32	2 7/8	1 23/32	0	5 3/8	35.9
160R20	R2	1 3/8 - 3 5/8 "	13.83	12.785	20	6	1.156	5 5/32	4 7/8	1 23/32	2	5 3/8	51.0
160R21	R2	1 3/8 - 3 5/8 "	14.47	13.419	21	6	1.156	5 5/32	4 7/8	1 23/32	2	5 3/8	56.0
160R22	R2	1 3/8 - 3 5/8 "	15.11	14.053	22	6	1.156	5 5/32	4 7/8	1 23/32	2	5 3/8	60.0
160R23	R2	1 3/8 - 3 5/8 "	15.75	14.688	23	6	1.156	5 5/32	4 7/8	1 23/32	2	5 3/8	65.0
160R24	R2	1 3/8 - 3 5/8 "	16.39	15.323	24	6	1.156	5 5/32	4 7/8	1 23/32	2	5 3/8	71.5
160R25	R2	1 3/8 - 3 5/8 "	17.03	15.958	25	6	1.156	5 5/32	4 7/8	1 23/32	2	5 3/8	74.0
160R26	R2	1 3/8 - 3 5/8 "	17.67	16.593	26	6	1.156	5 5/32	4 7/8	1 23/32	2	5 3/8	79.0
160R18	R2	1 3/8 - 3 5/8 "	18.95	17.863	18	6	1.156	5 5/32	4 7/8	1 23/32	2	5 3/8	99.8
160R30	R2	1 3/8 - 3 5/8 "	20.23	19.134	30	6	1.156	5 5/32	4 7/8	1 23/32	2	5 3/8	106.0
160S30	S2	1 7/8 - 4 3/16 "	20.23	19.134	30	6	1.156	7 1/8	6 3/4	2 23/32	2 7/8	6 3/8	115.0
160S35	S2	1 7/8 - 4 3/16 "	23.42	22.312	35	6	1.156	7 1/8	6 3/4	2 23/32	2 7/8	6 3/8	150.0
160S40	S2	1 7/8 - 4 3/16 "	26.61	25.491	40	6	1.156	7 1/8	6 3/4	2 23/32	2 7/8	6 3/8	165.0
160S45	S2	1 7/8 - 4 3/16 "	29.80	28.671	45	6	1.156	7 1/8	6 3/4	2 23/32	2 7/8	6 3/8	204.0
160S60	U0	2 3/8 - 5 1/2 "	39.36	38.215	60	6	1.156	5 25/32	5 1/4	1 21/32	1 15/16	8 3/8	354.0
160S70	U0	2 3/8 - 5 1/2 "	45.73	44.578	70	6	1.156	5 25/32	5 1/4	1 21/32	1 15/16	8 3/8	308.0
160S80	U1	2 3/8 - 5 1/2 "	52.10	50.943	80	6	1.156	7 19/32	7 1/4	2 19/32	2 7/8	8 3/8	394.0

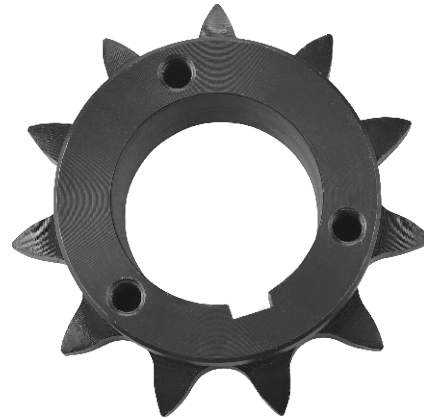
# Sprockets With Split Taper Bushings American Standard Series

No.200

◇ Pitch 2 1/2" ◇ Roller Φ 1.562" ◇ Tooth width B1 1.389"



TYPE 6



## Single-Split Taper Bushed

Number	Bushing	Bore Range	De	Dp	No. Teeth	Type	B1	OL	L	P	C	H	Wt. Less (Bushing)
200R12	R2	1 7/8 - 3 7/8 "	10.83"	9.660"	12	6	1.389"	5 5/32"	4 7/8 "	1 1/2 "	2	5 3/8 "	35.3
200S13	S2	1 7/8 - 4 7/16	11.64	10.447	13	6	1.389	7 1/8	6 3/4	2 1/2	2 7/8	6 3/8	52.2
200S14	S2	1 7/8 - 4 7/16	12.46	11.235	14	6	1.389	7 1/8	6 3/4	2 1/2	2 7/8	6 3/8	57.5
200S15	S2	1 7/8 - 4 7/16	13.26	12.025	15	6	1.389	7 1/8	6 3/4	2 1/2	2 7/8	6 3/8	61.0
200S16	S2	1 7/8 - 4 7/16	14.07	12.815	16	6	1.389	7 1/8	6 3/4	2 1/2	2 7/8	6 3/8	71.0
200S17	S2	1 7/8 - 4 7/16	14.87	13.605	17	6	1.389	7 1/8	6 3/4	2 1/2	2 7/8	6 3/8	79.0
200U18	U0	2 3/8 - 5 1/2	15.68	14.397	18	6	1.389	5 23/32	5 1/4	2 17/32	1 5/8	8 3/8	76.5
200U19	U0	2 3/8 - 5 1/2	16.48	15.190	19	6	1.389	5 23/32	5 1/4	2 17/32	1 5/8	8 3/8	83.7
200U20	U0	2 3/8 - 5 1/2	17.26	15.982	20	6	1.389	5 23/32	5 1/4	2 17/32	1 5/8	8 3/8	91.3
200U21	U0	2 3/8 - 5 1/2	18.09	16.775	21	6	1.389	5 23/32	5 1/4	2 17/32	1 5/8	8 3/8	99.4
200U22	U0	2 3/8 - 5 1/2	18.89	17.567	22	6	1.389	5 23/32	5 1/4	2 17/32	1 5/8	8 3/8	110.0
200U23	U0	2 3/8 - 5 1/2	19.69	18.360	23	6	1.389	5 23/32	5 1/4	2 17/32	1 5/8	8 3/8	117.0
200U24	U0	2 3/8 - 5 1/2	20.49	19.152	24	6	1.389	5 23/32	5 1/4	2 17/32	1 5/8	8 3/8	126.0
200U25	U0	2 3/8 - 5 1/2	21.29	19.947	25	6	1.389	5 23/32	5 1/4	2 17/32	1 5/8	8 3/8	140.0
200U26	U0	2 3/8 - 5 1/2	22.09	20.740	26	6	1.389	5 23/32	5 1/4	2 17/32	1 5/8	8 3/8	150.0
200U28	U0	2 3/8 - 5 1/2	23.69	22.330	28	6	1.389	5 23/32	5 1/4	2 17/32	1 5/8	8 3/8	169.0
200U30	U0	2 3/8 - 5 1/2	25.29	23.917	30	6	1.389	5 23/32	5 1/4	2 17/32	1 5/8	8 3/8	188.0
200U32	U0	2 3/8 - 5 1/2	26.88	25.505	32	6	1.389	5 23/32	5 1/4	2 17/32	1 5/8	8 1/8	212.0
200U35	U1	2 3/8 - 5 1/2	29.28	27.890	35	6	1.389	7 19/32	7 1/8	2 7/8	2 7/8	8 1/8	252.0
200U40	U1	2 3/8 - 5 1/2	33.27	31.865	40	6	1.389	7 19/32	7 1/8	2 7/8	2 7/8	8 3/8	306.0
200U45	U1	2 3/8 - 5 1/2	37.25	35.840	45	6	1.389	7 19/32	7 1/8	2 7/8	2 7/8	8 3/8	290.0
200U54	U2	2 7/16 - 5	44.42	42.995	54	6	1.389	10 19/32	10 1/8	3 7/32	4 1/4	8 3/8	385.0
200U60	U2	2 7/16 - 5	49.20	47.767	60	6	1.389	10 19/32	10 1/8	3 7/32	4 1/4	8 3/8	445.0