

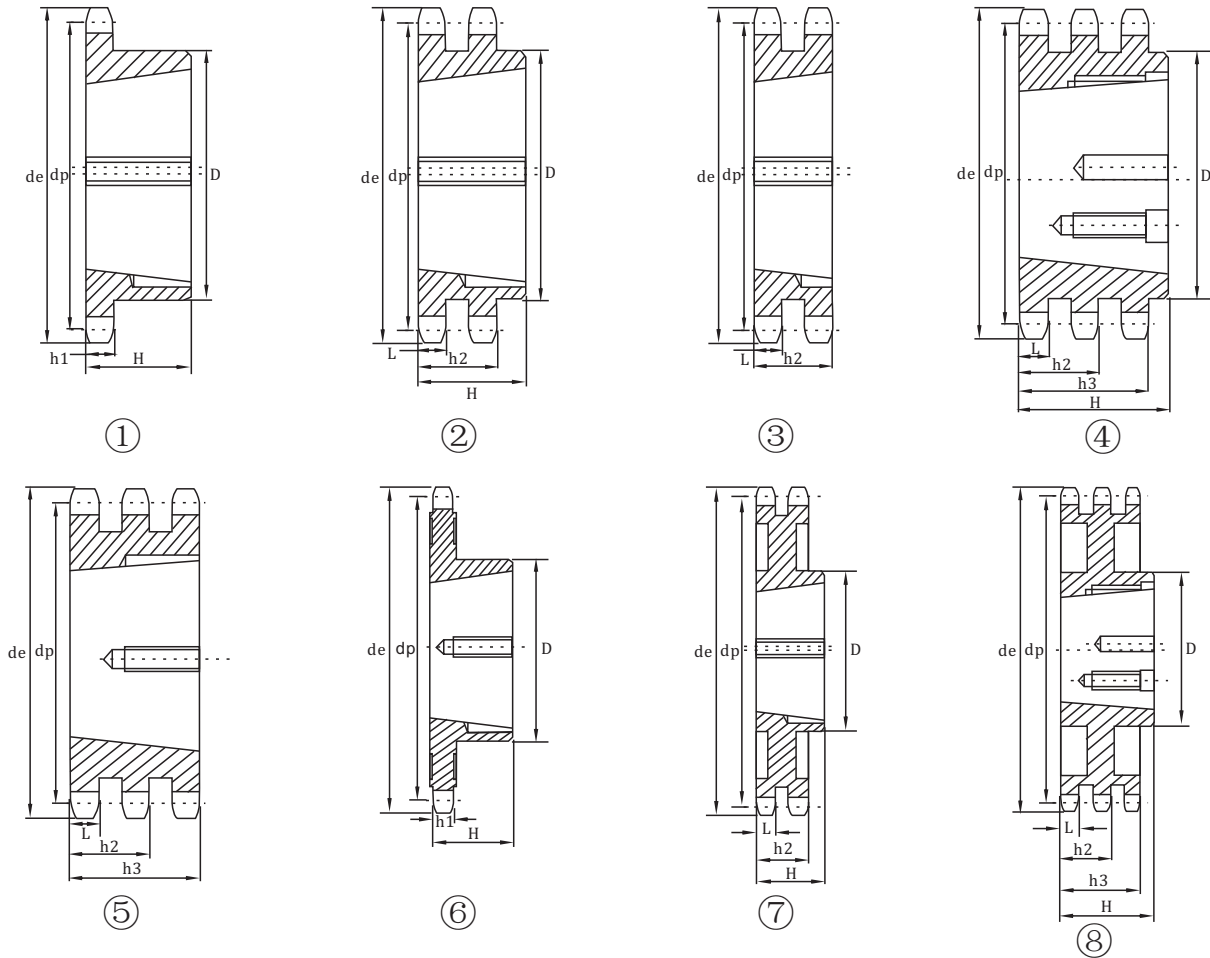
Taper Bore Sprockets European Standard Series

06B-1-2-3

SPROCKETS 3/8" × 7/32"

For Chain Acc. to DIN 8187

ISO/R 606



SPROCKETS	mm	CHAIN	mm
Tooth radius r	10	Pitch	9.525
Radius width C	1	Internal width	5.72
Tooth width h_1	5.3	Roller Φ	6.35
Tooth width L	5.2		
Tooth width h_2	15.4		
Tooth width h_3	25.6		

Steel=C45
*Cast iron=G22
cast iron with black phosphated

Z	d_e	d_p	TS				TD				TT			
			D	H	for Bush	Type	D	H	for Bush	Type	D	H	for Bush	Type
17	55.3	51.83	45	22	1008	1	41	22	1008	2	-	25.6	1008	5
19	61.3	57.87	45	22	1008	1	46	22	1008	2	-	25.6	1008	5
21	68.0	63.91	46	22	1008	1	49	22	1008	2	-	25.6	1008	5
23	73.5	69.95	63	25	1210	1	59	25	1210	2	-	25.6	1210	5
25	80.0	76.02	63	25	1210	1	64	25	1210	2	-	25.6	1210	5
27	86.0	82.02	63	25	1210	1	70	25	1210	2	-	25.6	1210	5
30	94.7	91.12	63	25	1210	1	75	25	1210	2	79	38	1615	4
*38	119.5	115.35	70	25	1210	1	80	25	1610	2	90	38	1615	4
*45	140.7	136.55	70	25	1210	1	80	25	1610	2				
*57	176.9	172.91	70	25	1210	6	80	25	1610	7				
*76	234.9	230.49	70	25	1210	6	80	25	1610	7				
*95	292.5	288.08	80	25	1210	6	90	25	1610	7				
*114	349.5	345.68	80	25	1210	6	95	38	1615	7				

Taper Bore Sprockets European Standard Series

08B-1-2-3

SPROCKETS 1/2" × 5/16"

For Chain Acc. to DIN 8187

ISO/R 606

SPROCKETS	mm	CHAIN	mm	Steel=C45
Tooth radius r	13	Pitch	12.7	*Cast iron=G22
Radius width C	1.3	Internal width	7.75	cast iron with black phosphated
Tooth width h ₁	7.2	Roller Φ	8.51	
Tooth width L	7			
Tooth width h ₂	21			
Tooth width h ₃	34.9			

Z	d _e	d _p	TS				TD				TT			
			D	H	for Bush	Type	D	H	for Bush	Type	D	H	for Bush	Type
15	65.5	61.09	45	22	1008	1	46	22	1008	2	-	34.9	1008	5
17	73.6	69.11	60	25	1210	1	56	25	1210	2	-	34.9	1210	5
19	81.7	77.16	63	25	1210	1	62	25	1210	2	-	34.9	1210	5
21	89.7	85.22	71	25	1610	1	70	25	1610	2	-	34.9	1610	5
23	98.2	93.27	76	25	1610	1	79	25	1610	2	-	34.9	1610	5
25	105.8	101.33	76	25	1610	1	87	32	2012	2	-	34.9	2012	5
27	114.0	109.40	76	25	1610	1	87	32	2012	2	-	34.9	2012	5
30	126.1	121.50	90	32	2012	1	87	32	2012	2	-	34.9	2012	5
*38	158.6	153.80	90	32	2012	1	100	32	2012	2	-	34.9	2012	5
*45	188.0	182.07	100	32	2012	1	100	32	2012	2	-	34.9	2012	5
*57	236.4	230.54	100	32	2012	6	100	32	2012	7				
*76	313.3	307.33	100	32	2012	6	100	32	2012	7				
*95	390.1	384.11	100	32	2012	6	100	32	2012	7				
*114	466.9	460.90	110	45	2517	6	110	45	2517	7				

10B-1-2-3

SPROCKETS 5/8" × 3/8"mm

For Chain Acc. to DIN 8187

ISO/R 606

SPROCKETS	mm	CHAIN	mm	Steel=C45
Tooth radius r	16	Pitch	15.875	*Cast iron=G22
Radius width C	1.6	Internal width	9.65	cast iron with black phosphated
Tooth width h ₁	9.1	Roller Φ	10.16	
Tooth width L	9			
Tooth width h ₂	25.5			
Tooth width h ₃	42.1			

Z	d _e	d _p	TS				TD				TT			
			D	H	for Bush	Type	D	H	for Bush	Type	D	H	for Bush	Type
13	73.0	66.32	47	22	1008	1								
15	83.0	76.36	60	25	1210	1	-	25.5	1210	3	-	42.1	1210	5
17	93.0	86.36	71	25	1610	1	-	25.5	1610	3	-	42.1	1210	5
19	103.3	96.45	75	25	1610	1	-	25.5	1610	3	-	42.1	1615	5
21	113.4	106.52	76	25	1610	1	-	25.5	1610	3	-	42.1	1615	5
23	123.4	116.58	76	25	1610	1	-	25.5	1610	3	-	42.1	2012	5
25	134.0	126.66	90	32	2012	1	90	32	2012	2	105	45	2517	4
27	144.0	136.75	90	32	2012	1	90	32	2012	2	110	45	2517	4
30	158.8	151.87	90	32	2012	1	90	32	2012	2	120	45	2517	4
*38	199.2	192.24	100	32	2012	1								
*45	235.0	227.58	100	32	2012	6								
*57	296.0	288.18	100	32	2012	6								
*76	392.1	384.16	100	32	2012	6								
*95	488.5	480.14	110	45	2517	6								
*114	584.1	576.13	110	45	2517	6								

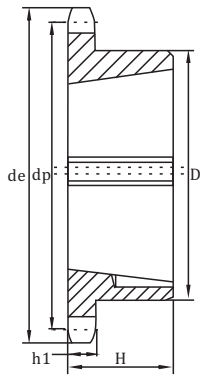
Taper Bore Sprockets European Standard Series

12B-1-2-3

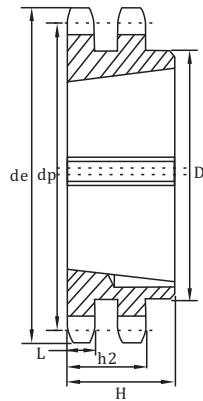
SPROCKETS 3/4" × 7/16"

For roller chains DIN 8187

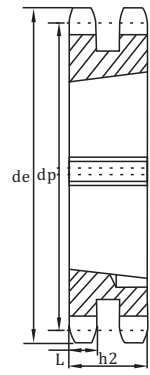
ISO/R 606



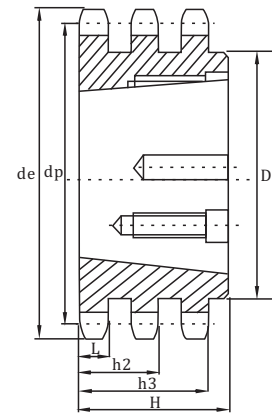
①



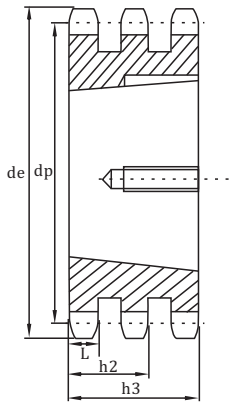
②



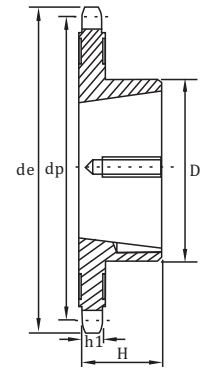
③



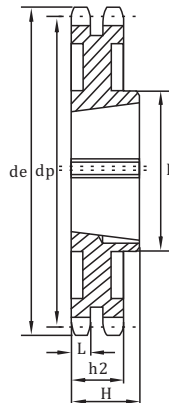
④



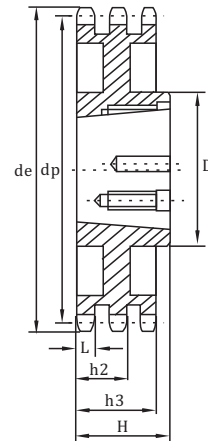
⑤



⑥



⑦



⑧

SPROCKETS	mm	CHAIN	mm
Tooth radius r	19	Pitch	19.05
Radius width C	2	Internal width	11.68
Tooth width h_1	11.1	Roller Φ	12.07
Tooth width L	10.8		
Tooth width h_2	30.3		
Tooth width h_3	49.8		

Steel=C45

*Cast iron=G22

cast iron with black phosphated

Z	d_e	d_p	TS				TD				TT			
			D	H	for Bush	Type	D	H	for Bush	Type	D	H	for Bush	Type
13	87.5	79.59	60	25	1210	1								
15	99.8	91.63	70	25	1610	1	-	30.3	1610	3	-	49.8	1615	5
17	111.5	103.67	76	25	1610	1	-	30.3	1610	3	-	49.8	1615	5
19	124.2	115.75	90	32	2012	1	90	32	2012	2	-	49.8	2012	5
21	136.0	127.82	102	45	2517	1	108	45	2517	2	-	49.8	2517	5
23	149.0	139.90	108	45	2517	1	108	45	2517	2	-	49.8	2517	5
25	160.0	152.00	108	45	2517	1	108	45	2517	2	-	49.8	2517	5
27	172.3	164.00	108	45	2517	1	108	45	2517	2	140	51	3020	4
30	190.5	182.25	108	45	2517	1	108	45	2517	2	140	51	3020	4
38	239.0	230.69	108	45	2517	1	140	51	3020	2	140	51	3020	4
45	282.5	273.10	108	45	2517	6	140	51	3020	7	140	51	3020	8
*57	355.4	345.81	108	45	2517	6	140	51	3020	7	140	51	3020	8
*76	469.9	460.99	108	45	2517	6	140	51	3020	7	140	51	3020	8
*95	585.1	576.17	108	45	2517	6	140	51	3020	7	140	76	3030	8
*114	700.6	691.36	108	64	2525	6	140	76	3030	7	140	76	3030	8

Taper Bore Sprockets European Standard Series

16B-1-2-3

25.4 × 17.02mm

For Chain Acc. to DIN 8187

ISO/R 606

SPROCKETS	mm	CHAIN	mm	Steel=C45
Tooth radius r	26	Pitch	25.4	*Cast iron=G22
Radius width C	2.5	Internal width	17.02	cast iron with black phosphated
Tooth width h ₁	16.2	Roller Φ	15.88	
Tooth width L	15.8			
Tooth width h ₂	47.7			
Tooth width h ₃	79.6			

Z	d _e	d _p	TS				TD				TT				
			D	H	for Bush	Type	D	H	for Bush	Type	D	H	for Bush	Type	
13	117.0	106.12	73	38	1615	1									
15	133.0	122.17	76	38	1615	1	-	47.7	2012	3					
17	149.0	138.22	90	32	2012	1	-	47.7	2517	3	-	79.6	2517	5	
19	165.2	154.33	108	45	2517	1	-	47.7	2517	3	-	79.6	3030	5	
21	181.2	170.43	110	45	2517	1	140	51	3020	2	-	79.6	3030	5	
23	197.5	186.53	110	45	2517	1	140	51	3020	2	159	89	3535	4	
25	213.5	202.66	110	45	2517	1	140	51	3020	2	175	89	3535	4	
27	229.6	218.79	110	45	2517	1	140	51	3020	2	175	89	3535	4	
30	254.0	243.00	140	51	3020	1	140	76	3030	2	175	89	3535	4	
38	320.7	307.59	140	51	3020	1	140	76	3030	2	175	89	3535	4	
45	377.1	364.13	140	51	3020	6	140	76	3030	7	215	102	4040	8	
*57	474.0	461.07	140	51	3020	6	175	89	3535	7	215	102	4040	8	
*76	627.0	614.65	140	51	3020	6	175	89	3535	7	215	102	4040	8	
*95	781.1	768.22	140	51	3020	6	215	102	4040	7	215	102	4040	8	
*114	934.3	921.81	140	76	3020	6	215	102	4040	7	260	114	4045	8	

20B-1-2-3

31.75 × 19.56mm

For Chain Acc. to DIN 8187

ISO/R 606

SPROCKETS	mm	CHAIN	mm	Steel=C45
Tooth radius r	32	Pitch	31.75	*Cast iron=G22
Radius width C	3.5	Internal width	19.56	cast iron with black phosphated
Tooth width h ₁	18.5	Roller Φ	19.05	
Tooth width L	18.2			
Tooth width h ₂	54.6			
Tooth width h ₃	91			

Z	d _e	d _p	TS			
			D	H	for Bush	Type
13	147.8	132.65	90	32	2012	1
15	167.9	152.72	108	45	2517	1
17	187.9	172.78	108	45	2517	1
19	208.1	192.91	108	45	2517	1
21	228.2	213.04	108	45	2517	1
23	248.3	233.17	108	45	2517	1
25	268.5	253.33	108	45	2517	1
27	288.6	273.40	150	51	3020	1
30	318.9	303.75	150	51	3020	1
38	399.6	384.49	160	51	3020	6
45	470.3	455.17	160	51	3020	6
*57	591.5	576.36	160	51	3020	6
*76	783.5	768.32	160	51	3020	6